

YUBA COLLEGE

fact book

- 2010 -



PRESENTED BY:
PLANNING, RESEARCH AND STUDENT SUCCESS
ERIK COOPER

Yuba College Fact Book 2010

Table of Contents

Introduction	2
County Demographics	
Sutter County	3
Yuba County	5
Colusa County	7
Lake County	9
Yolo County	11
Placer County	13
Butte County	15
Glenn County	17
Sacramento County	19
Student Demographics	21
Past and Projected Enrollment	22
Yuba College	23
Marysville Campus	28
Clear Lake Campus	32
Beale Air Force Base Outreach Center	36
Student Placement	40
High School Graduation Rates	43
Course Offerings	44
Resources	49

Introduction

The Yuba Community College District was founded in 1927 and opened its doors to students on the site of Marysville High School. In December 1965, the district was reorganized and in 1974-75 was expanded to serve students in all or part of 8 Northern California Counties: Yuba, Sutter, Colusa, Lake, Yolo, Butte, Glenn and Placer. After the expansions the district covered 4,192 miles and included portions of the Sierra Foothills, Central Valley, and Coastal range. The district currently has three campuses, Yuba College in Marysville, Woodland Community College in Woodland, and the Yuba College Clear Lake Campus in Clearlake and outreach operations at Beale Air Force Base. Two new outreach centers, in Colusa and Sutter counties, are currently under construction. While the district was originally a single college district with multiple campuses, Woodland Community College earned accreditation and became its own college in 2008.

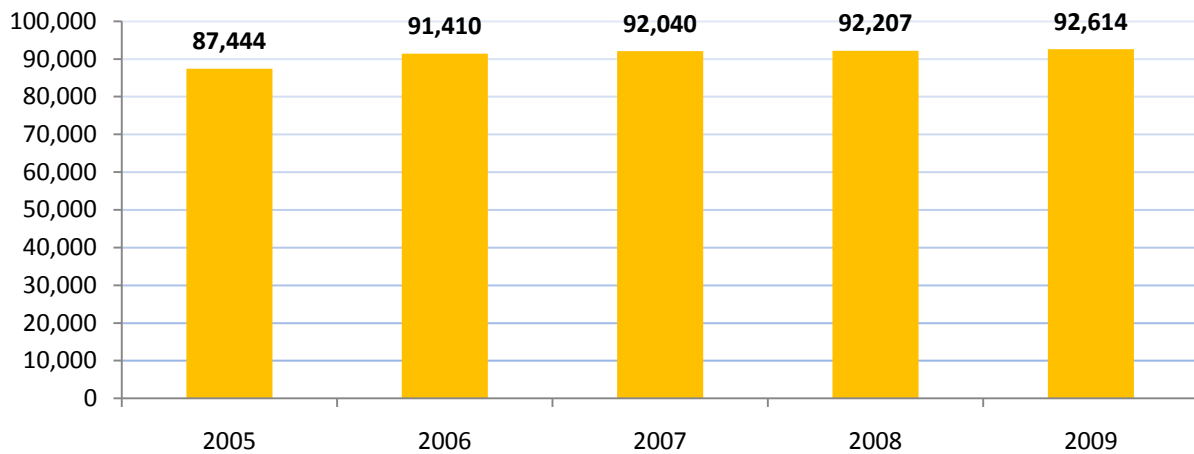
Yuba College opened on its current site, 2088 North Beale Road in Marysville, in September, 1962. The campus currently includes twenty-three buildings and sits on 160 acres. In 2006, voters approved bond funding, Measure J, to update and expand district buildings and infrastructure. Through the bond funding, nearly all of the buildings on campus are scheduled for some level of renovation. Two buildings, the liberal arts building and theater have already finished their renovations, and a new sports field is nearing completion. One new building, for the Allied Health and Public Safety programs, will be constructed as a result of the bond funds. The campus also provides a wide range of student services, which include financial aid, counseling, Child Development Center, and cafeteria.

In addition to the main campus, Yuba College operates two educational centers at the Clear Lake Campus and at the Beale Air Force Base Outreach Center. Courses have been offered at the Clear Lake Campus (CLC) since the fall semester of 1972. CLC is located just off of Highway 53 in the city of Clearlake in Lake County. Students at CLC can complete two years of pre-transfer work or complete degrees and certificates in a variety of general education and occupational degree and certificate programs including business, information technology, culinary arts, and nursing. CLC also offers a wide range of student services, and as the result of Measure J funding will be adding a new student services building that will include additional library, classroom, and administrative space. The Beale Air Force Base Outreach Center has hosted classes since the fall semester of 1960. Classes are located in the Base Education/Library Building at 17849 16th Street, Beale Air Force Base. A variety of general education and transfer courses are offered in two nine-week terms each semester.

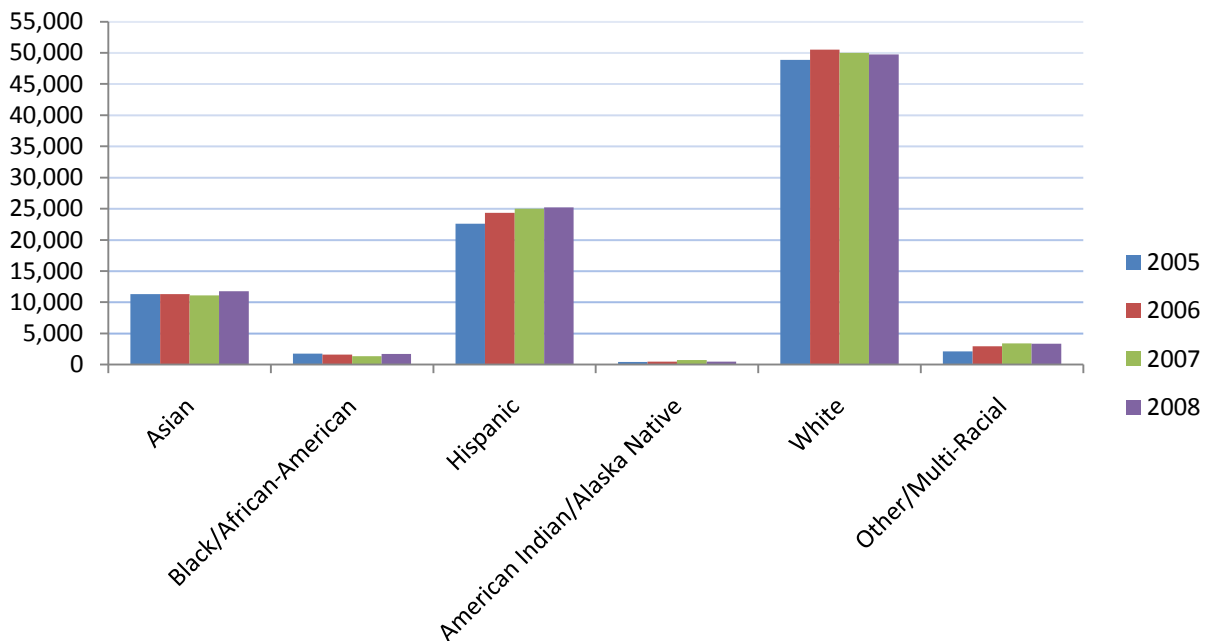
Sutter County

Sutter County was created in 1850, and is one of the original counties established when California was made a state. Sutter County covers 609 square miles. Nearly 90% of Sutter County's land area is farmland. As of September 2010, Sutter County had one of the highest unemployment rates in California, 17.2%. A new satellite campus is planned for Sutter County and will break ground in the fall of 2010.

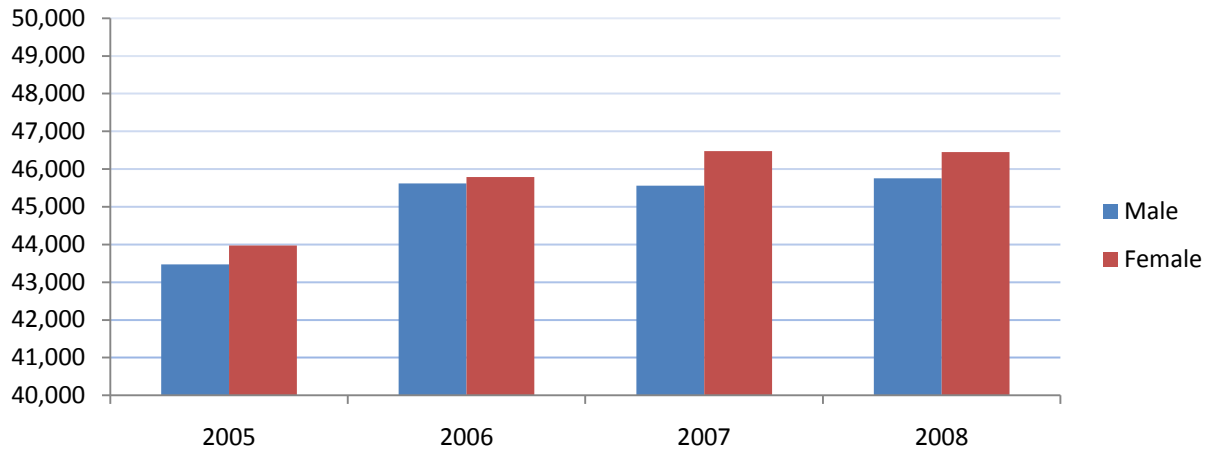
Sutter County Population



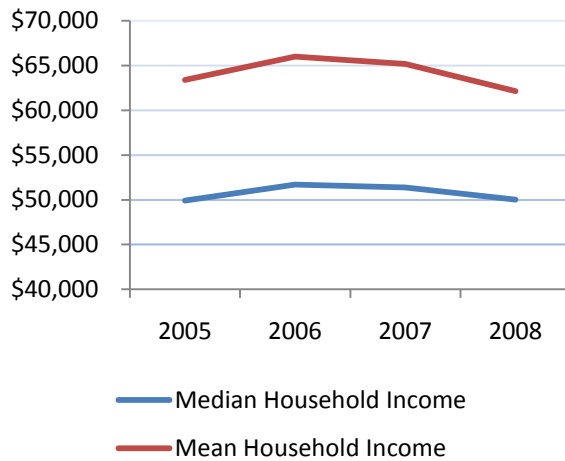
Sutter County Population by Race



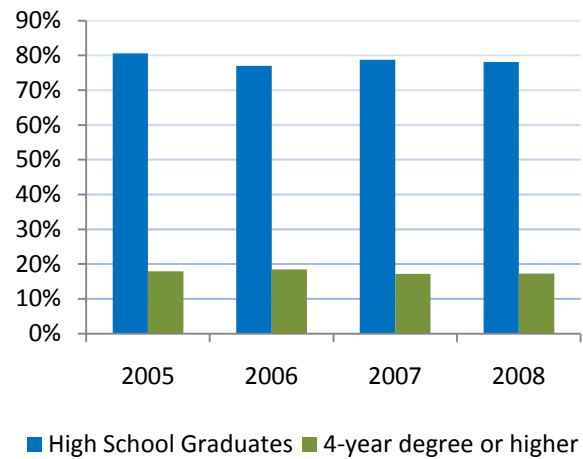
Sutter County Population by Gender



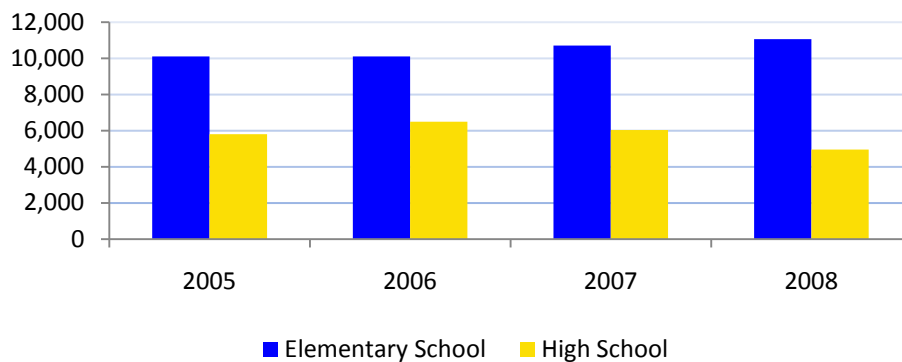
Household Income



Educational Attainment



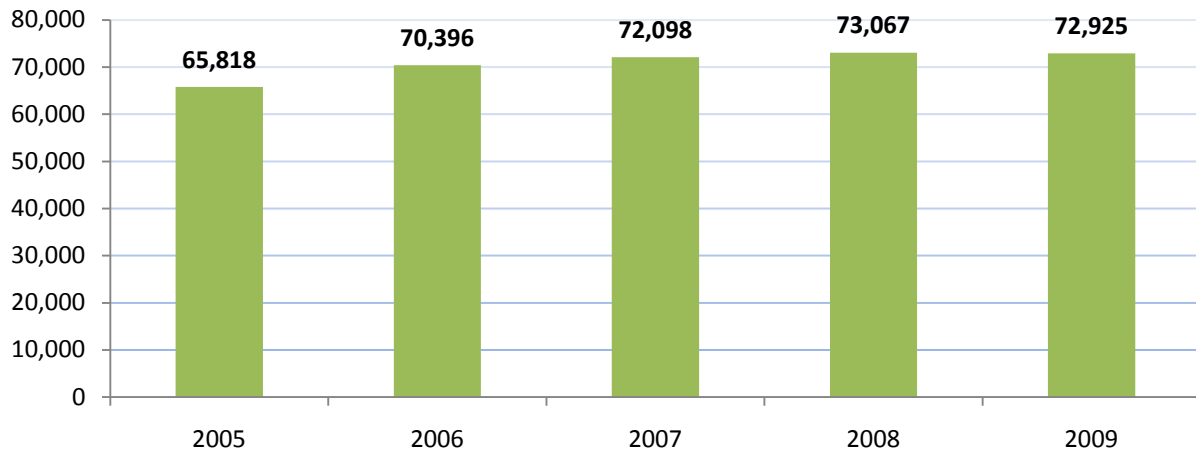
Sutter County School Enrollment



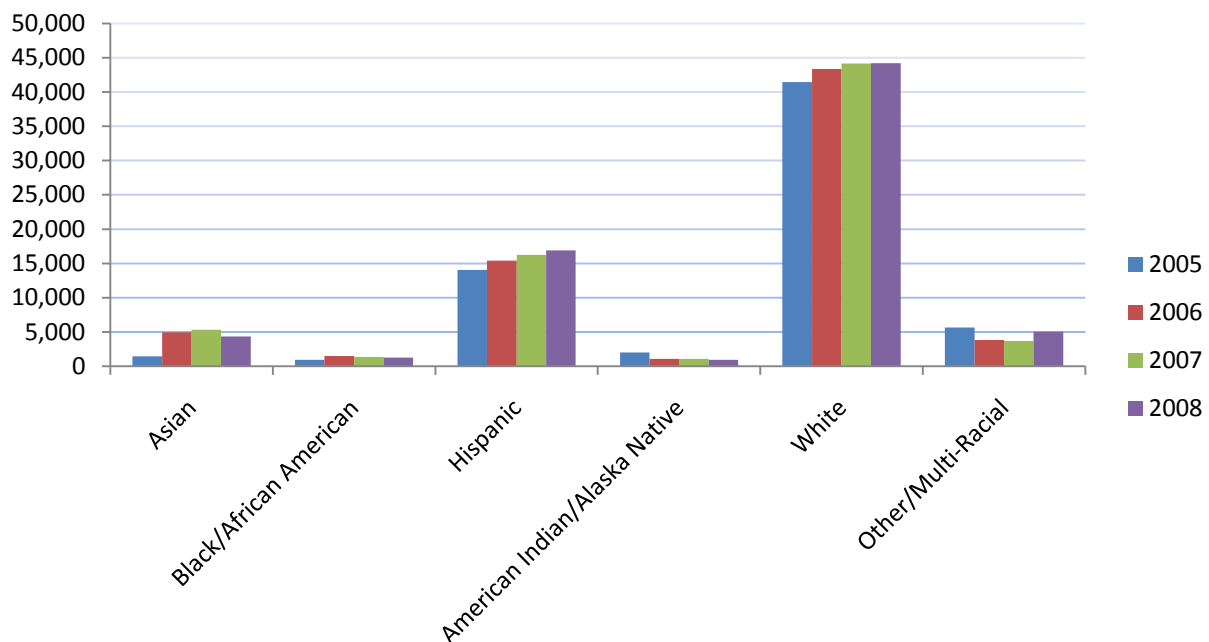
Yuba County

Yuba County was created in 1850, and is one of the original counties established when California was made a state. Yuba County covers 631 square miles. Yuba County is largely agricultural, with a mixture of farms, orchards, and ranches. Yuba College is located in Linda, in Yuba County. As of September 2010, Yuba had the second highest unemployment rate in California, 19.0%.

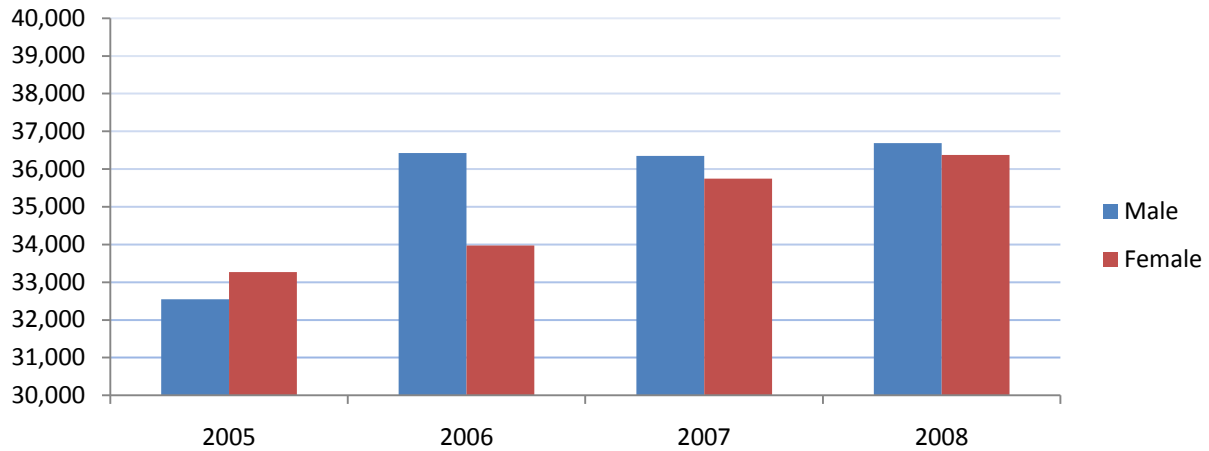
Yuba County Population



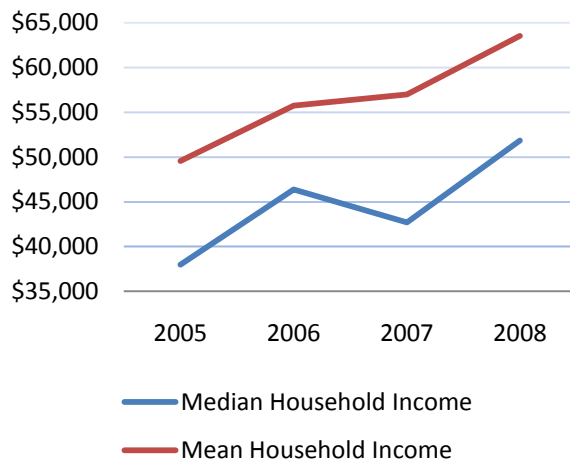
Yuba County Population by Race



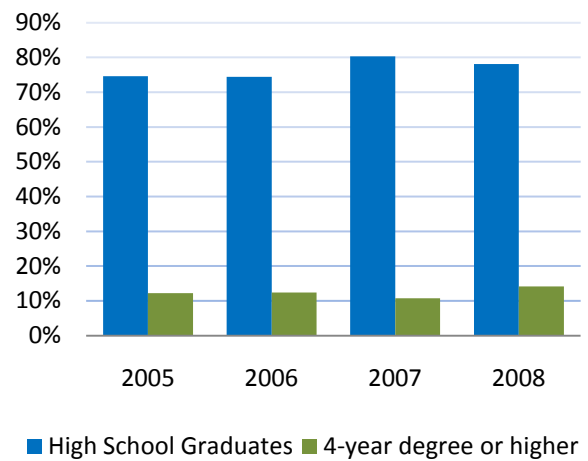
Yuba County Population by Gender



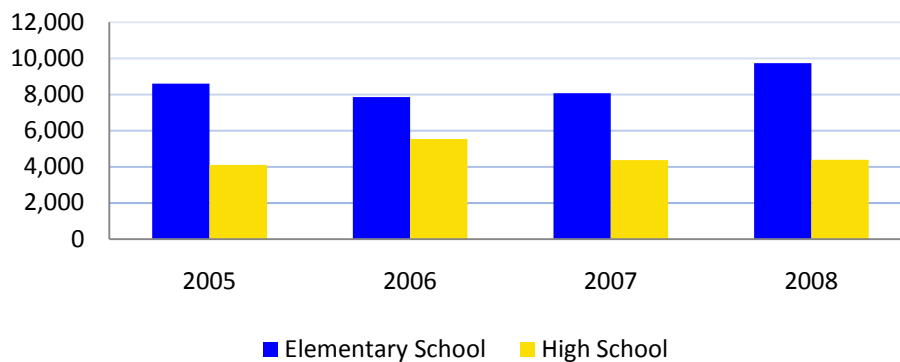
Household Income



Educational Attainment



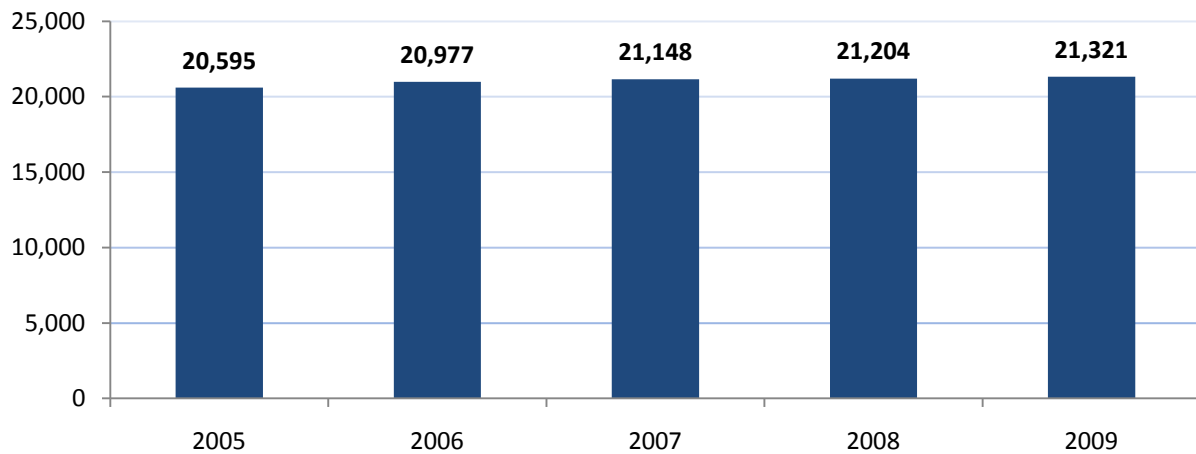
Yuba County School Enrollment



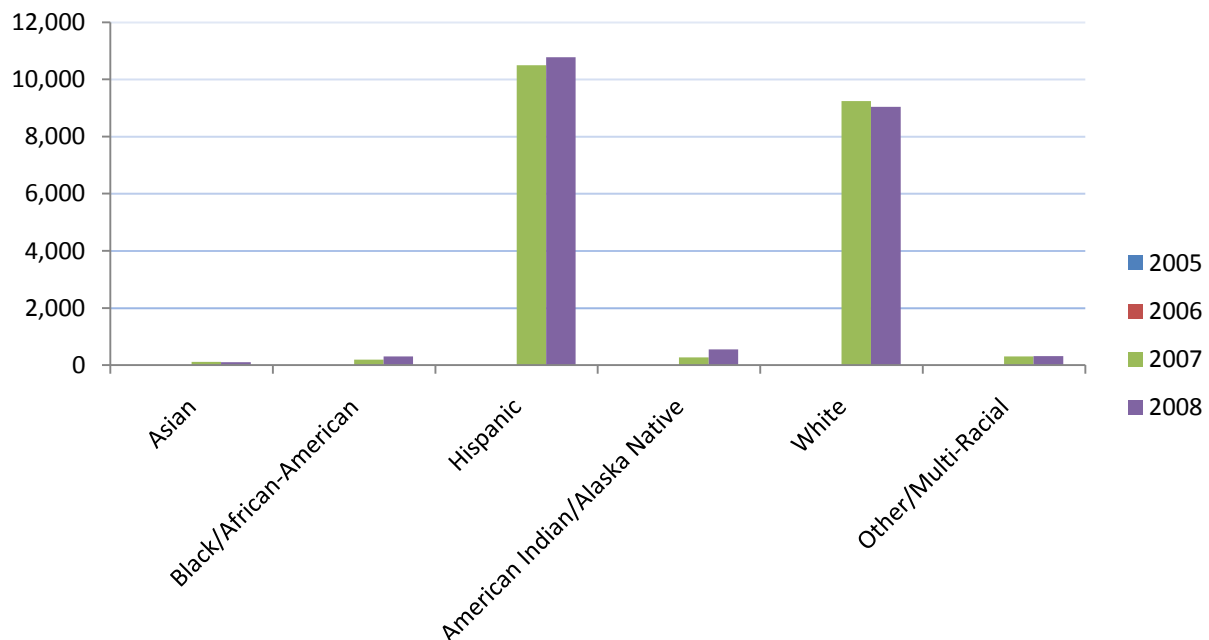
Colusa County

Colusa County was created in 1850, and is one of the original counties established when California was made a state. Colusa County covers 1,156 square miles. Colusa County economy is primarily agricultural. Colusa County is directly served by Woodland Community College, with plans to build a new college center in Williams. As of September 2010, Colusa County had an unemployment rate of 15.7%. Due to its small size, not all demographic information was available for Colusa County.

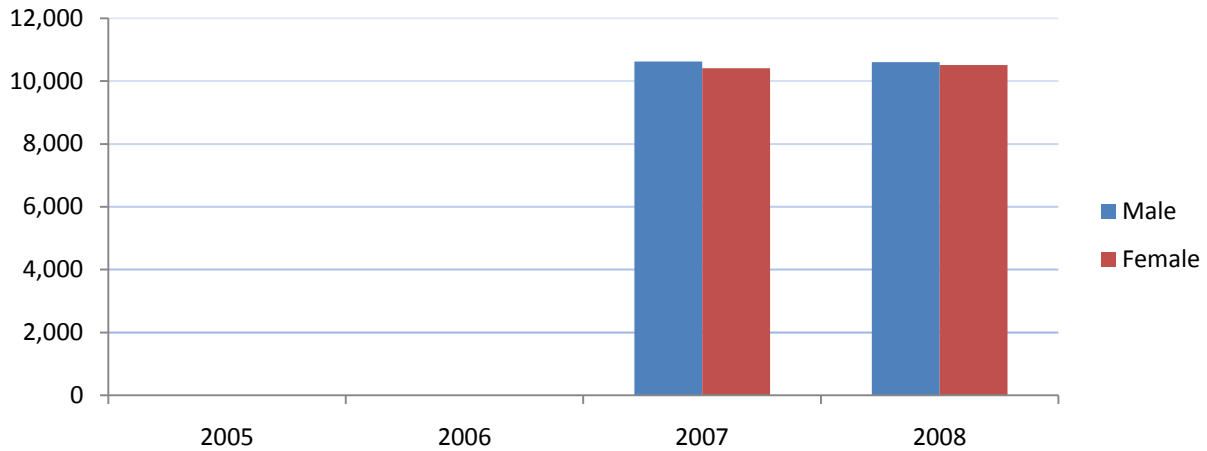
Colusa County Population



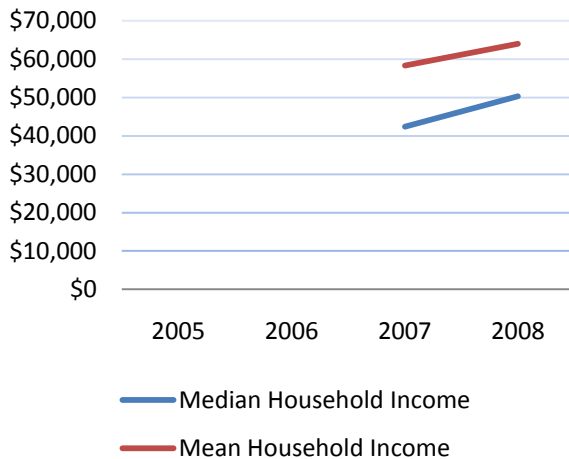
Colusa County Population by Race



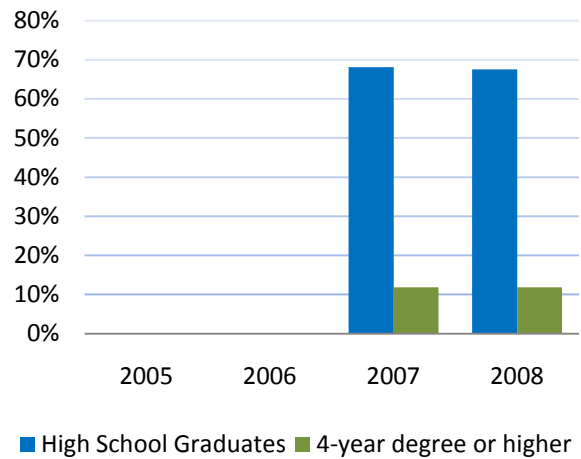
Colusa County Population by Gender



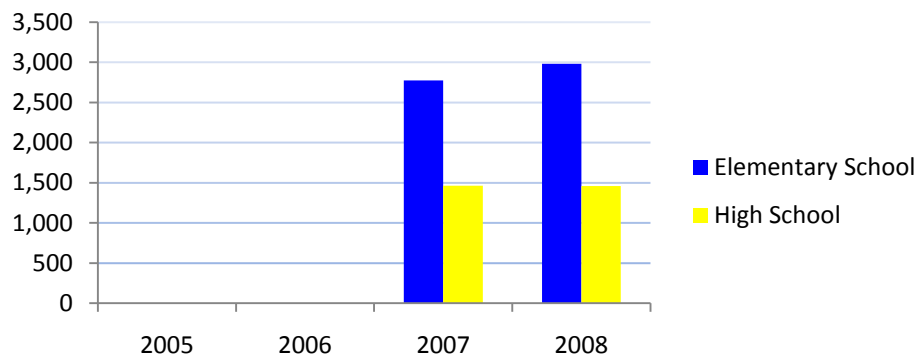
Household Income



Educational Attainment



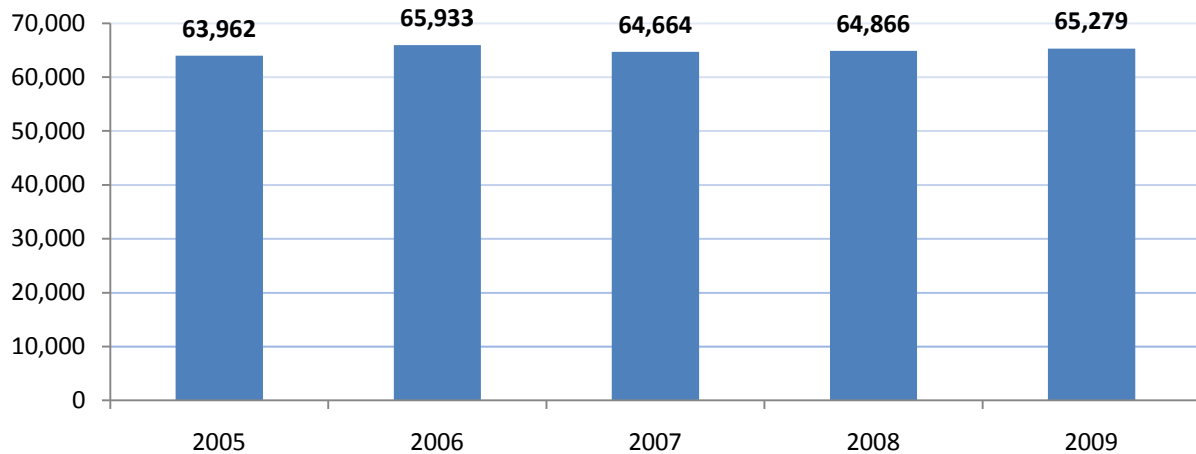
Colusa County School Enrollment



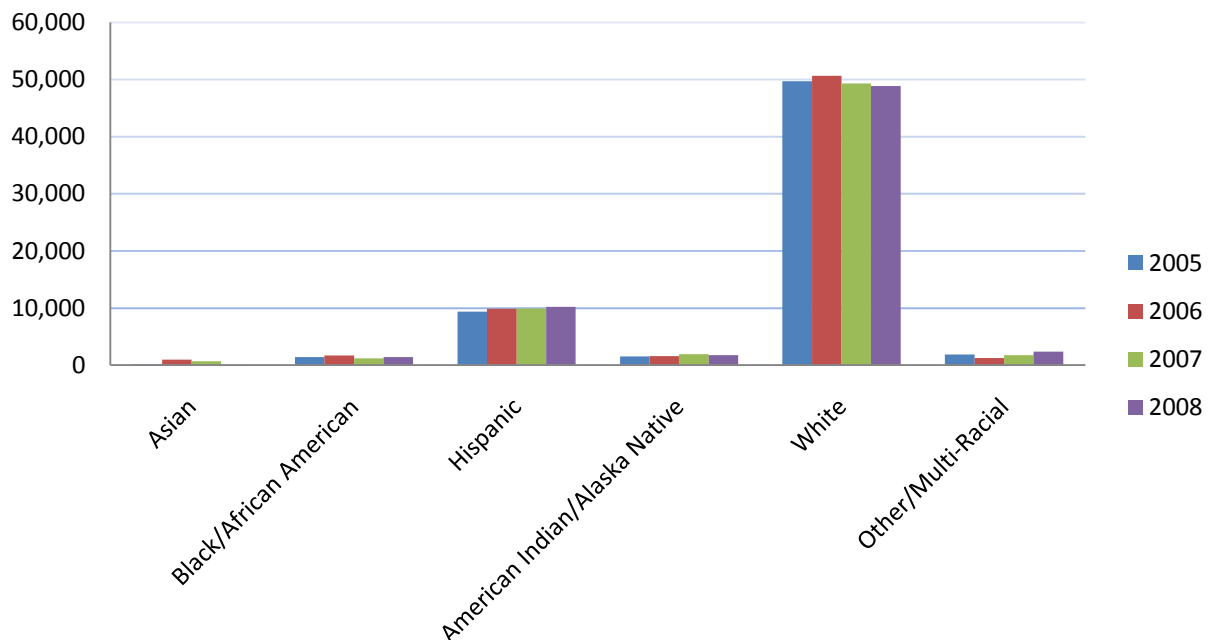
Lake County

Lake County was created in 1861 from portions of Napa and Mendocino Counties. Lake County covers 1,329 square miles. Lake County's economy is a mixture of agriculture and tourism. Lake County contains the second largest fresh water lake in California, Clear Lake. Yuba College operates the Clear Lake Center in the town of Clearlake. Lake County is also served by the Mendocino Community College District.

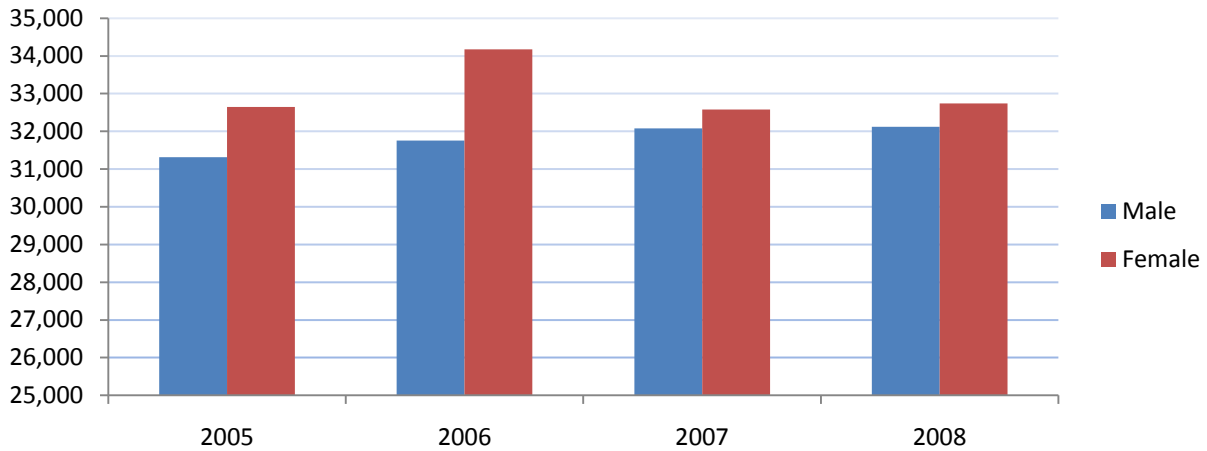
Lake County Population



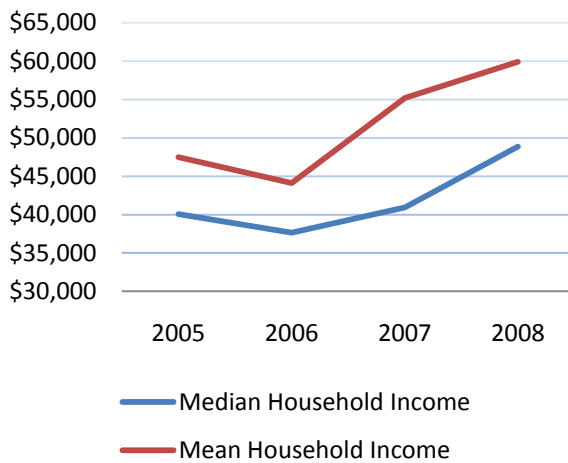
Lake County Population by Race



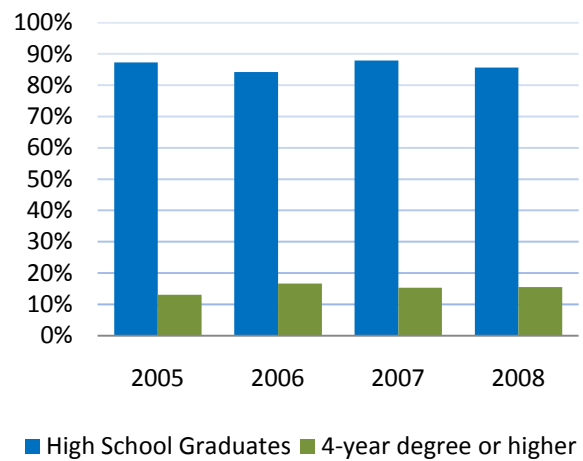
Lake County Population by Gender



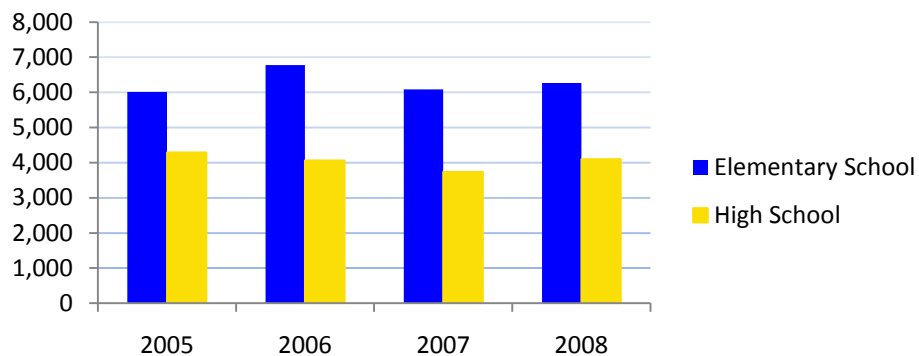
Household Income



Educational Attainment



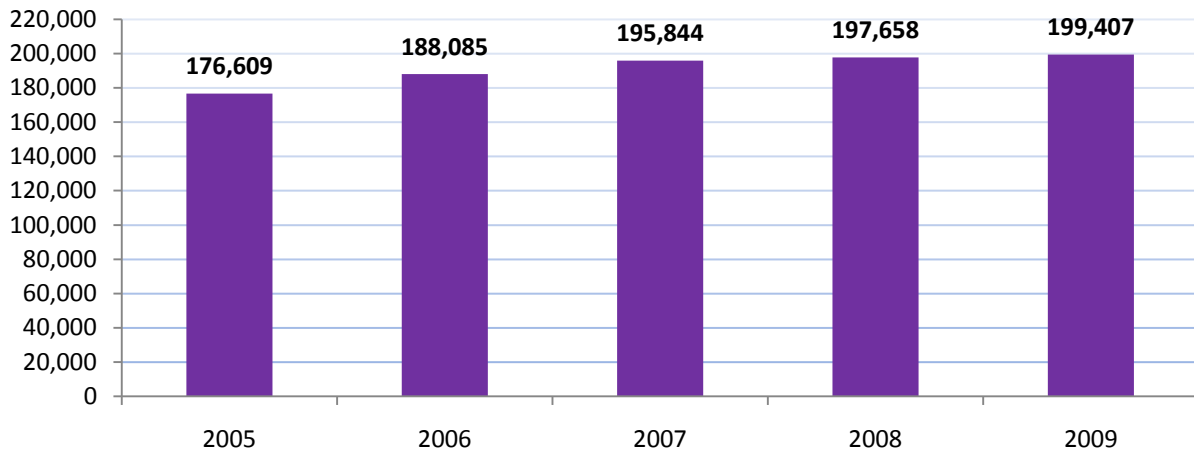
Lake County School Enrollment



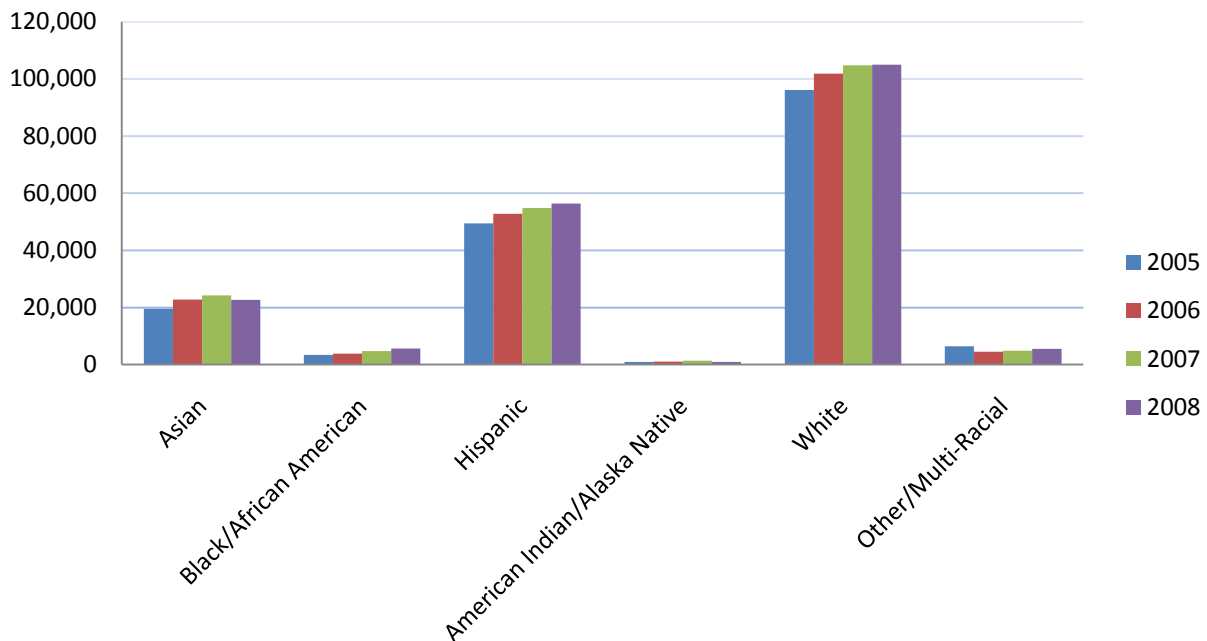
Yolo County

Yolo County was created in 1850, and is one of the original counties established when California was made a state. Yolo County covers 1,023 square miles. Yolo County is primarily agricultural, but also supports transportation and manufacturing industries. Woodland Community College, part of the Yuba Community College District is located in Woodland. As of September 2010, Yolo County had an unemployment rate of 11.6%. The University of California, Davis is located in Yolo County.

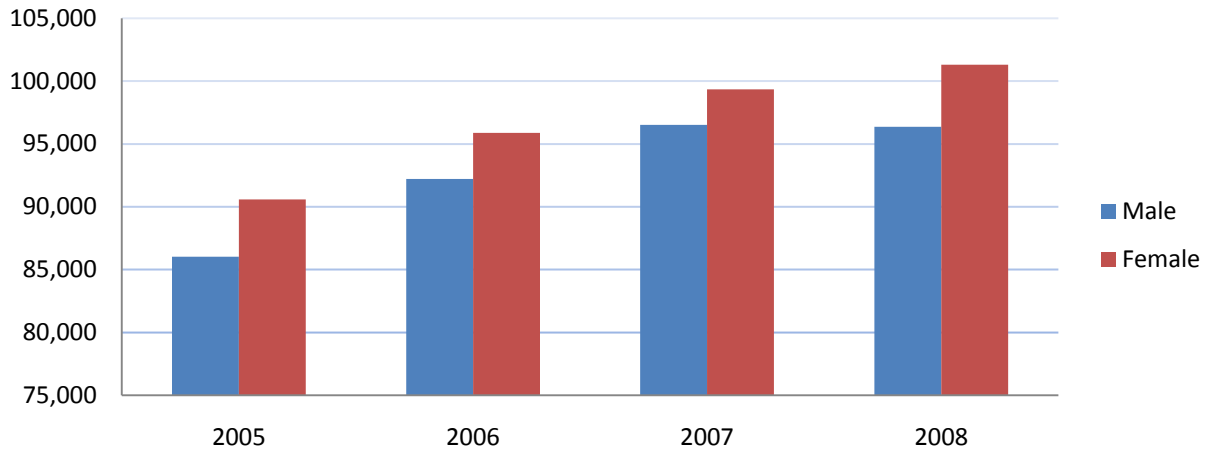
Yolo County Population



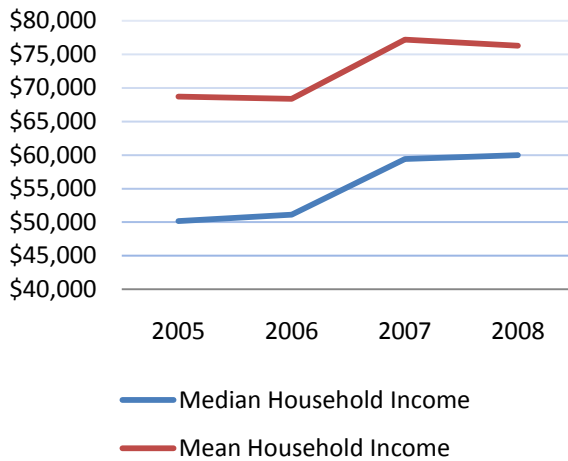
Yolo County Population by Race



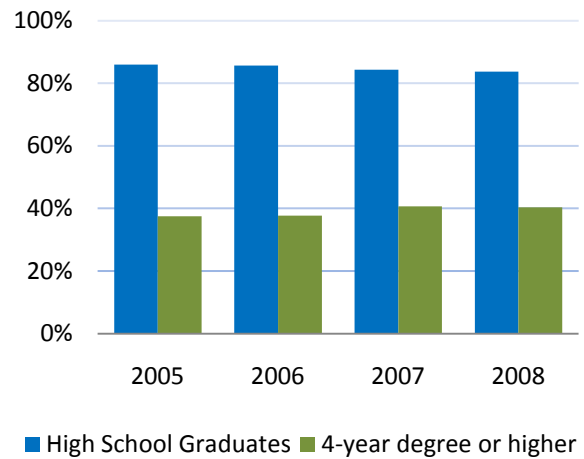
Yolo County Population by Gender



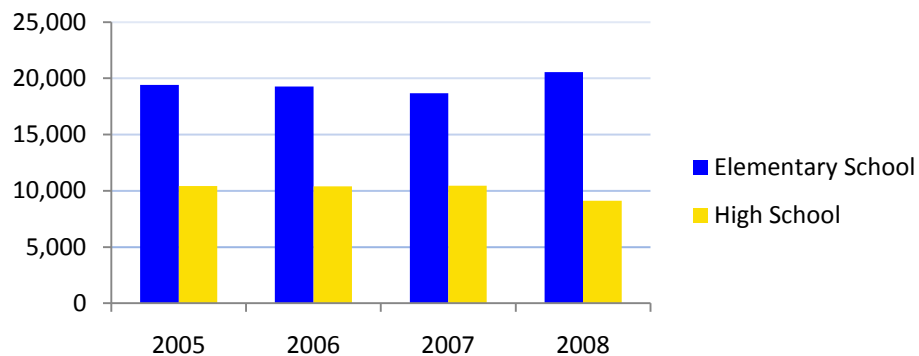
Household Income



Educational Attainment



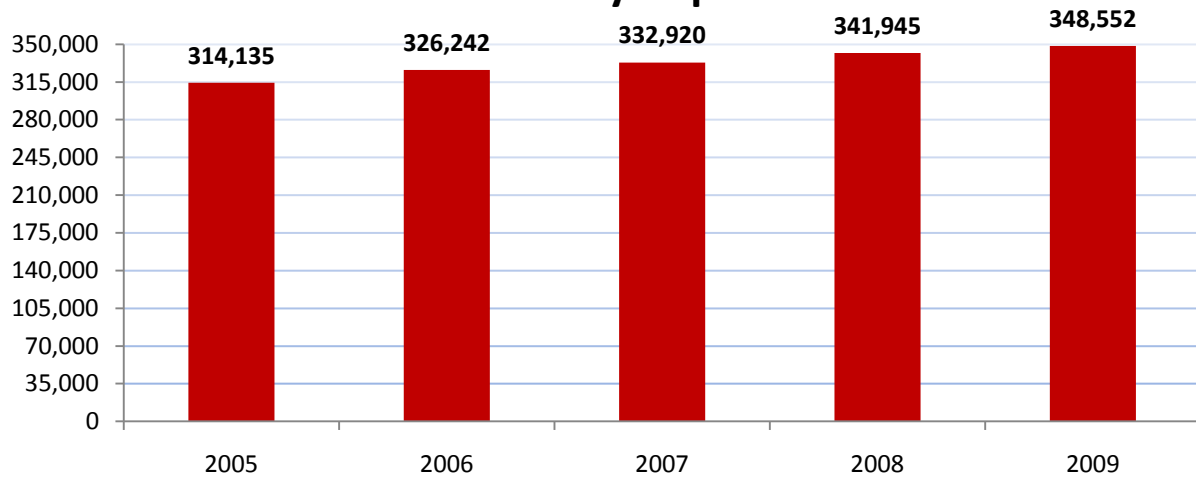
Yolo County School Enrollment



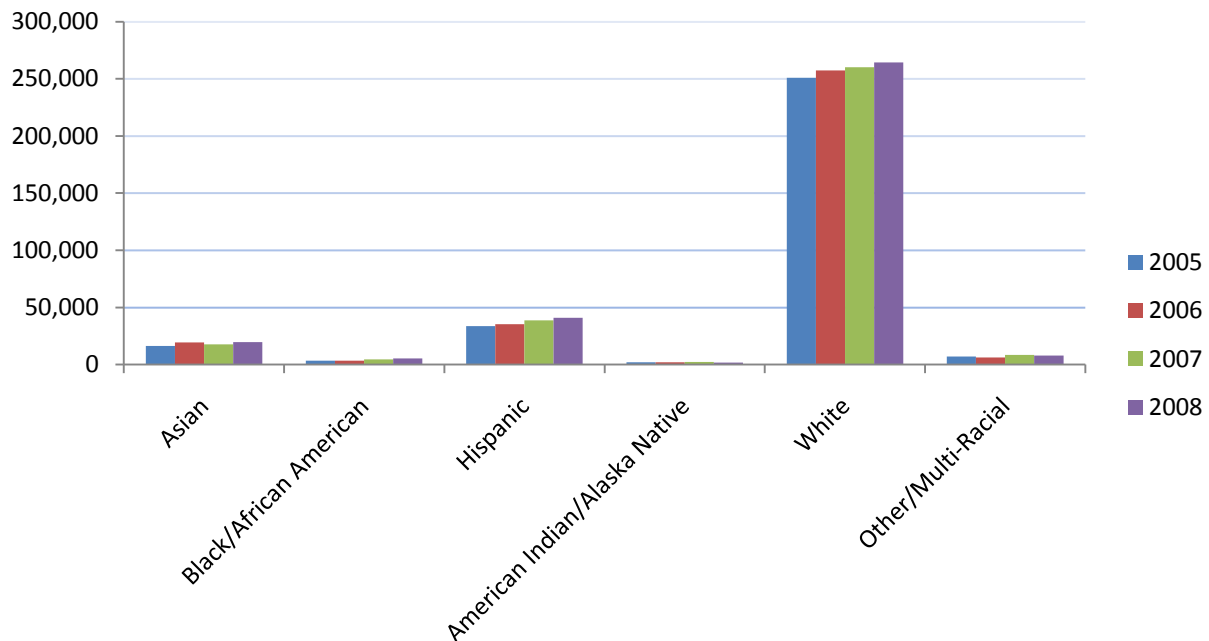
Placer County

Placer County was created in 1851 from portions of Sutter and Yuba Counties. Placer County covers 1,503 square miles, only a small portion of which is directly served by Yuba College. Placer County's economy is a mixture of agriculture, tourism, industry, and forestry. As of September 2010, Placer County had an unemployment rate of 11.5%, one of the lowest in the Sacramento region. Placer County is also served by the Sierra Community College District.

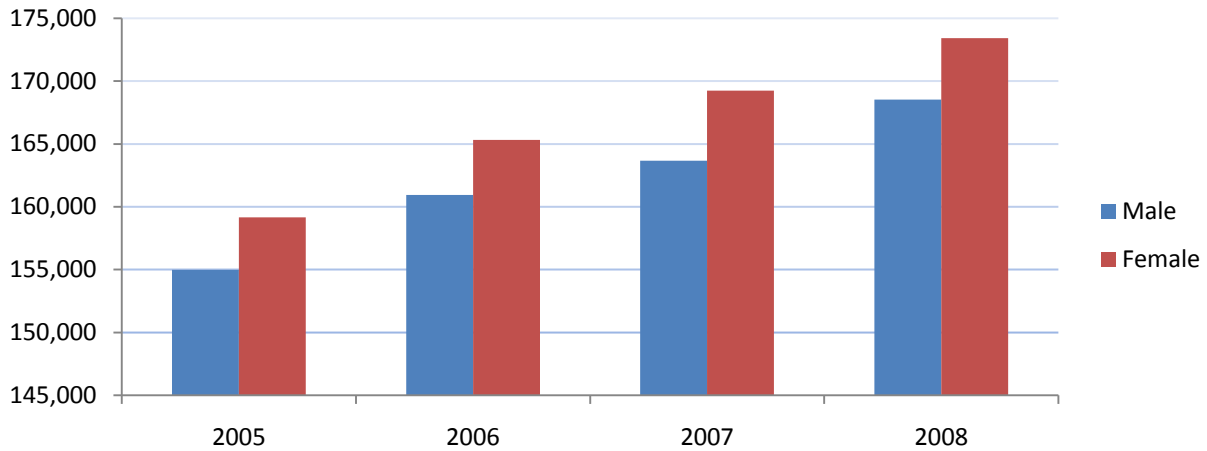
Placer County Population



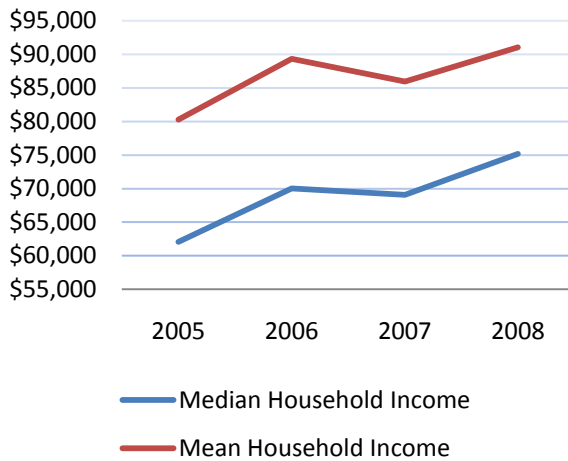
Placer County Population by Race



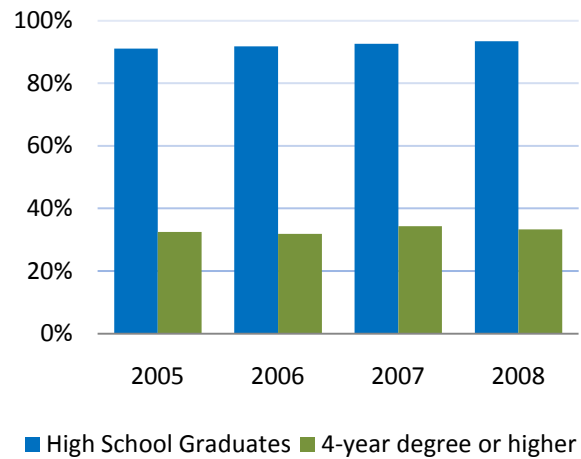
Placer County Population by Gender



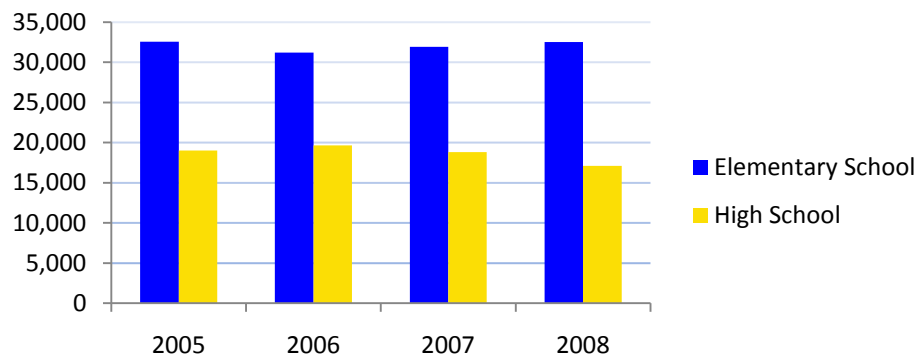
Household Income



Educational Attainment



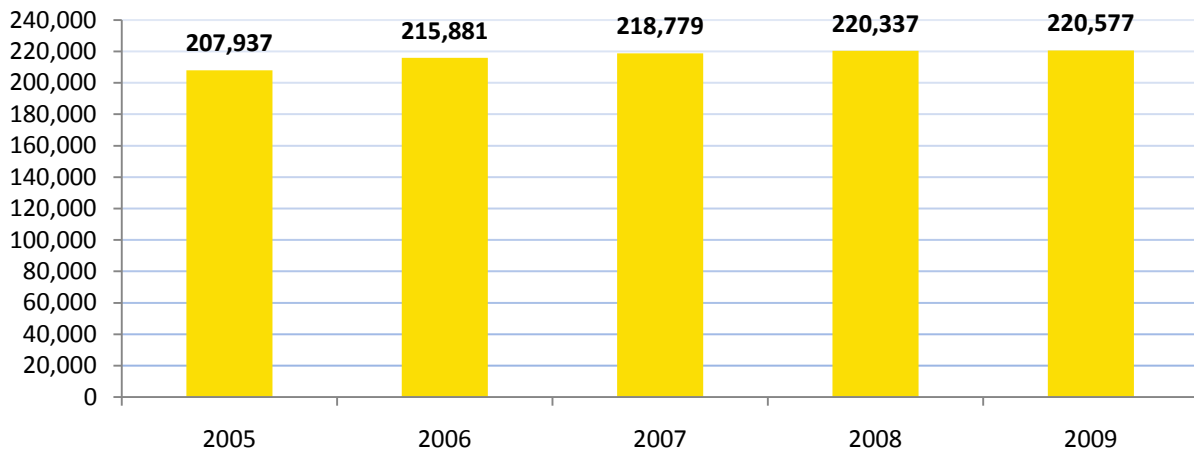
Placer County School Enrollment



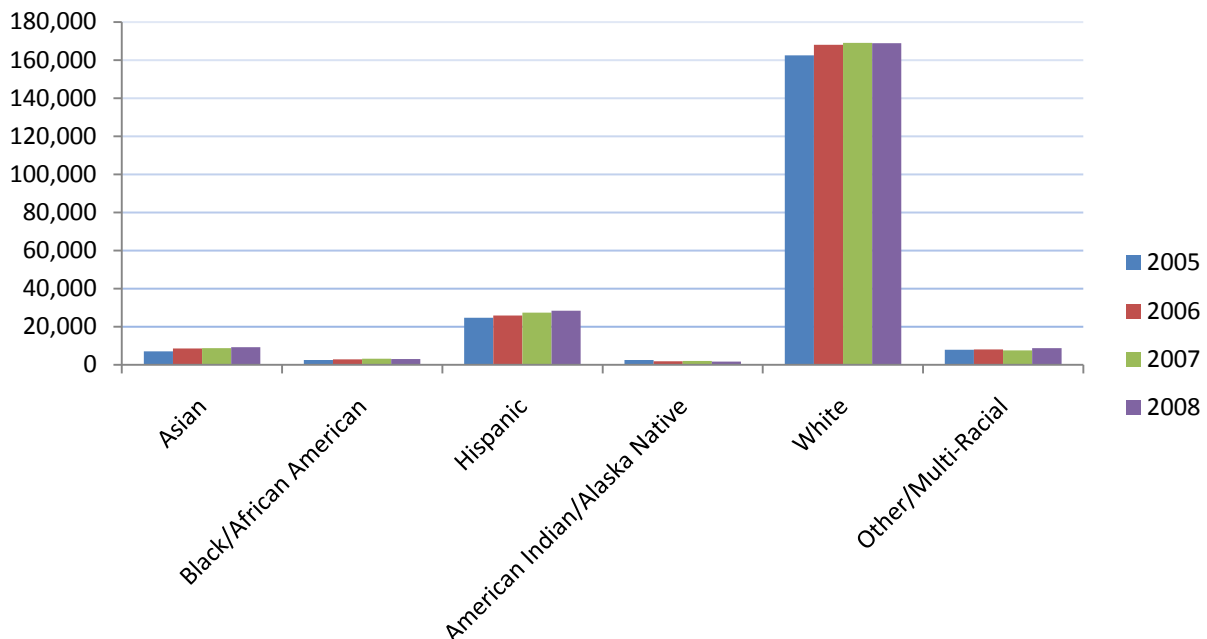
Butte County

Butte County was created in 1850, and is one of the original counties established when California was made a state. Butte County covers 1,677 square miles, only a small portion of which is directly served by Yuba College. As of September 2010, Butte County had an unemployment rate of 13.1%. Butte County is also served by Butte College and is the home of California State University, Chico.

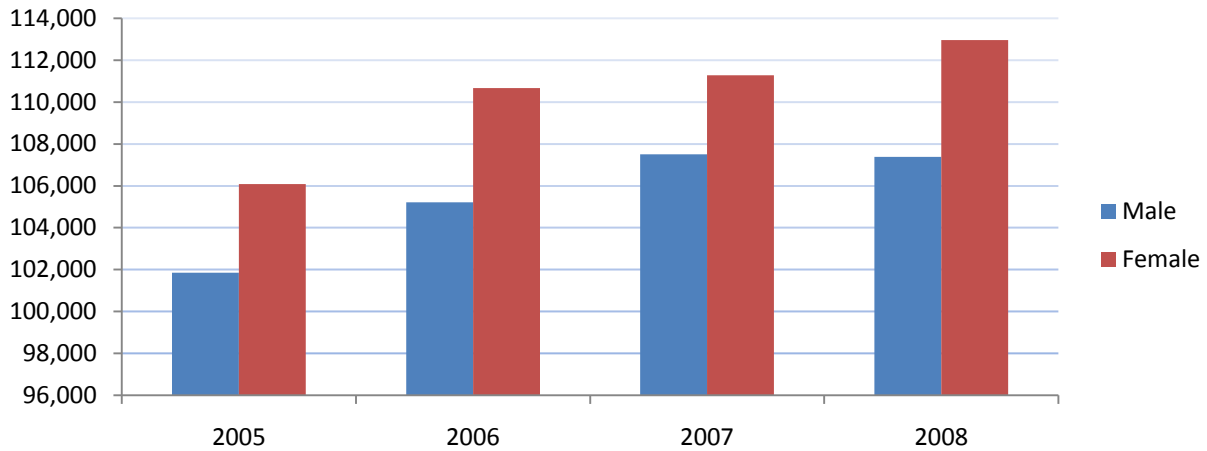
Butte County Population



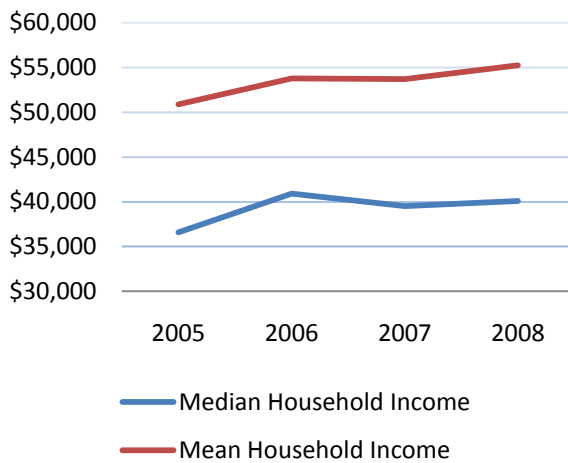
Butte County Population by Race



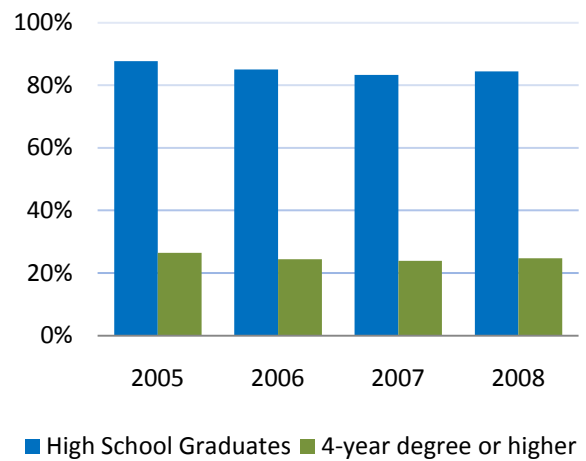
Butte County Population by Gender



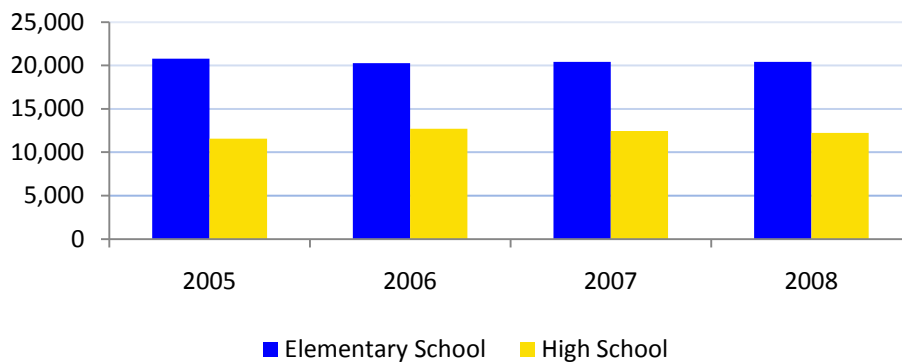
Household Income



Educational Attainment



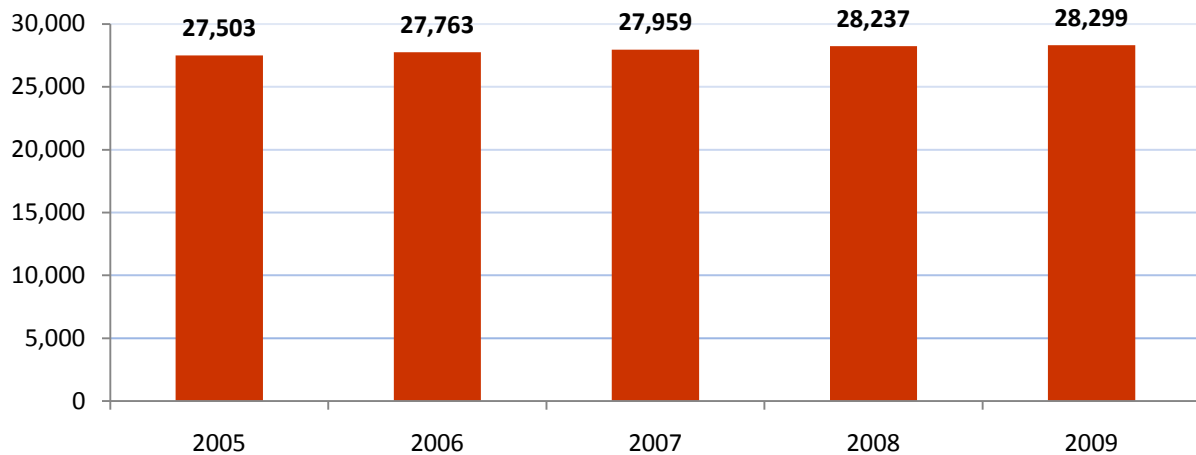
Butte County School Enrollment



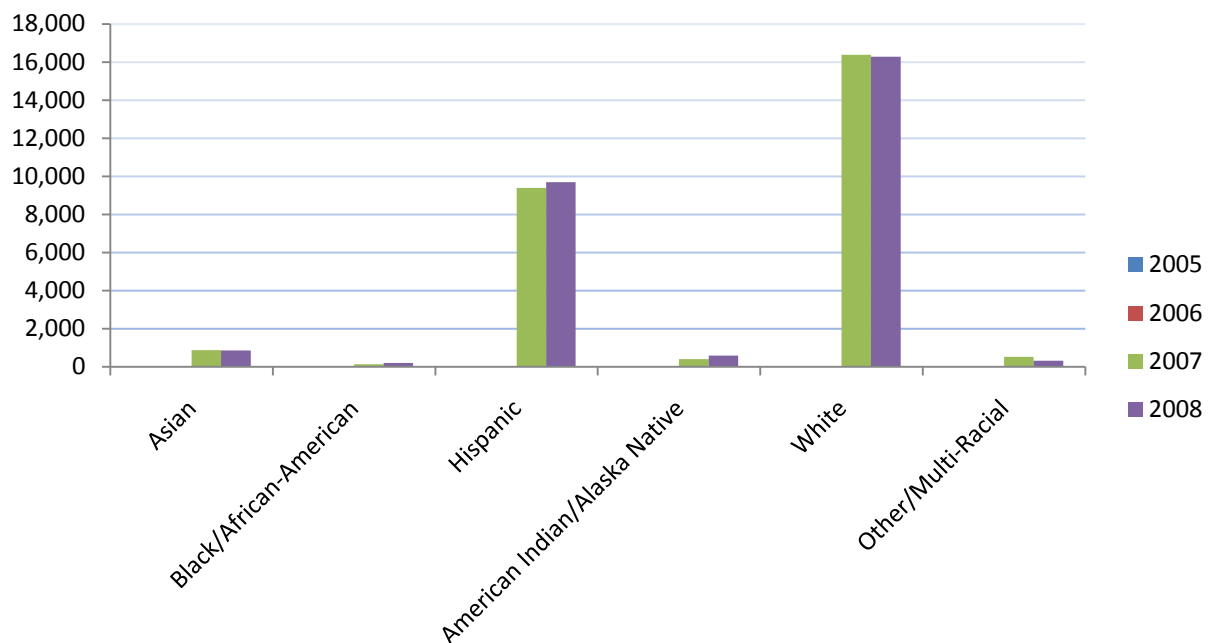
Glenn County

Glenn County was created in 1891 from portions Colusa County. Glenn County covers 1,327 square miles, only a portion of which is directly served by Yuba College. Glenn County's economy is primarily agricultural. As of September 2010, Glenn County had an unemployment rate of 14.7%. Due to its small size, demographic information was not available for all years.

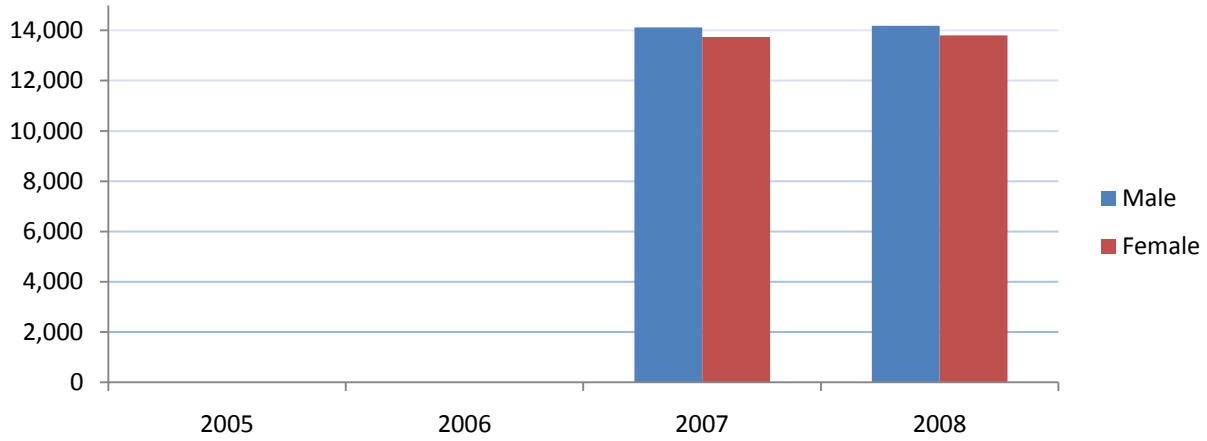
Glenn County Population



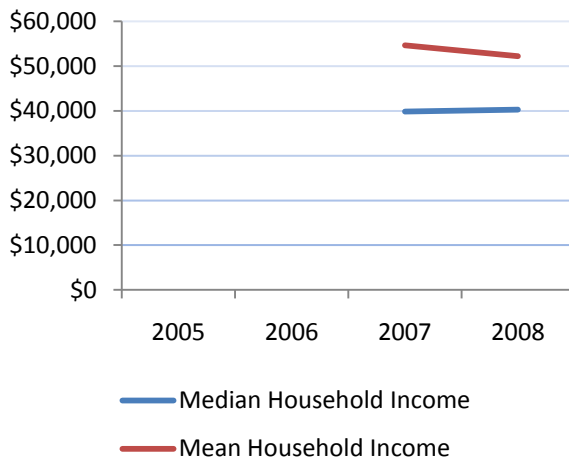
Glenn County Population by Race



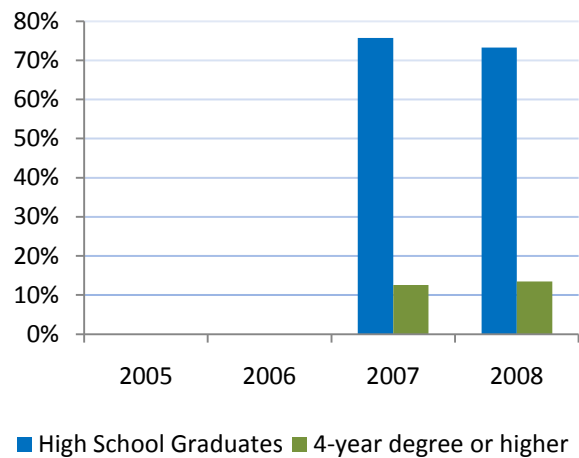
Glenn Population by Gender



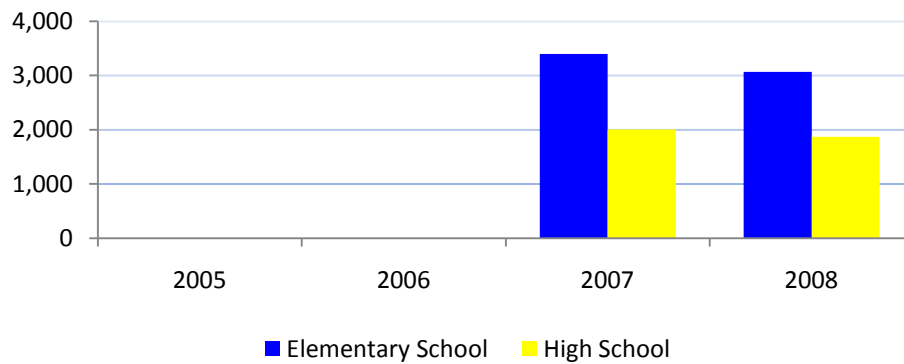
Household Income



Educational Attainment



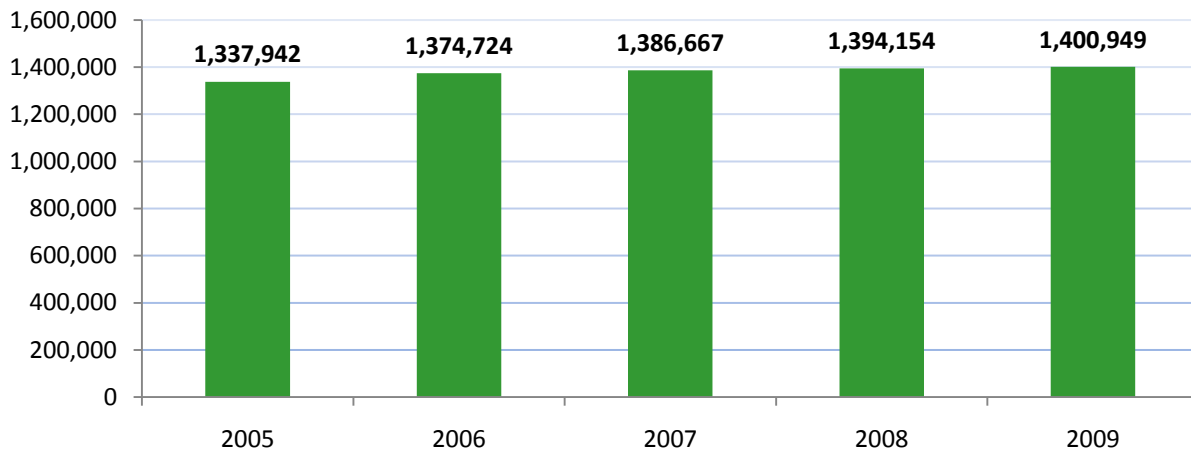
School Enrollment



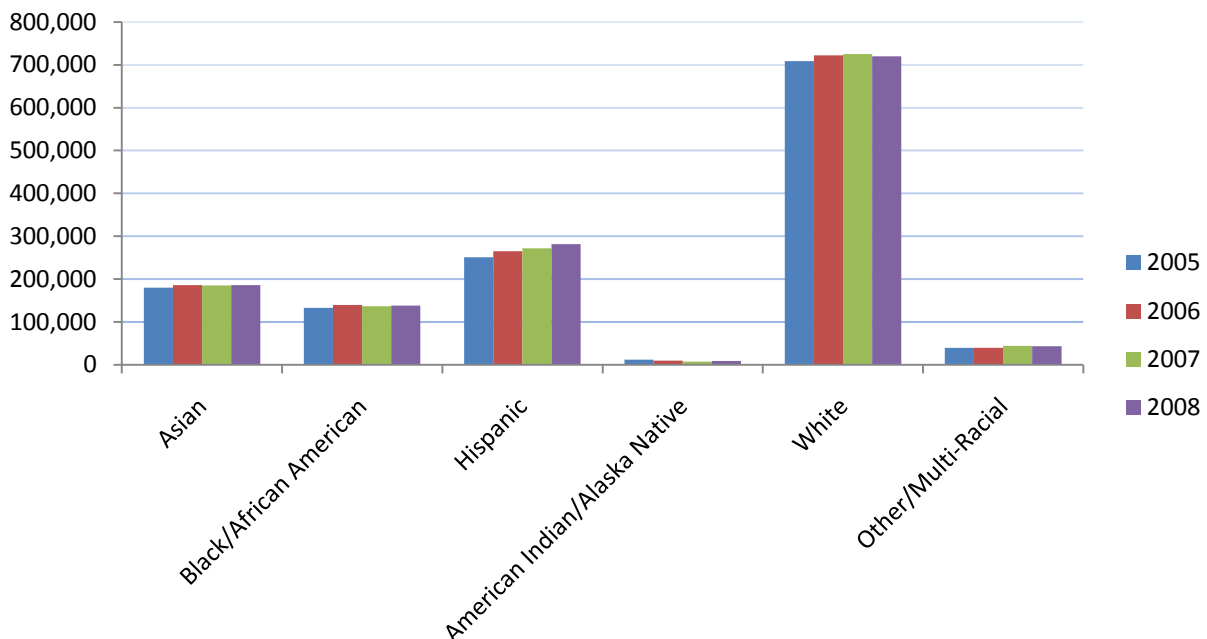
Sacramento County

Sacramento County was created in 1850, and is one of the original counties established when California was made a state. Sacramento County covers 955 square miles, none of which is directly served by Yuba College. However, many graduates from Yuba College find employment in the Sacramento area. As of September 2010, Sacramento County had an unemployment rate of 13.0%.

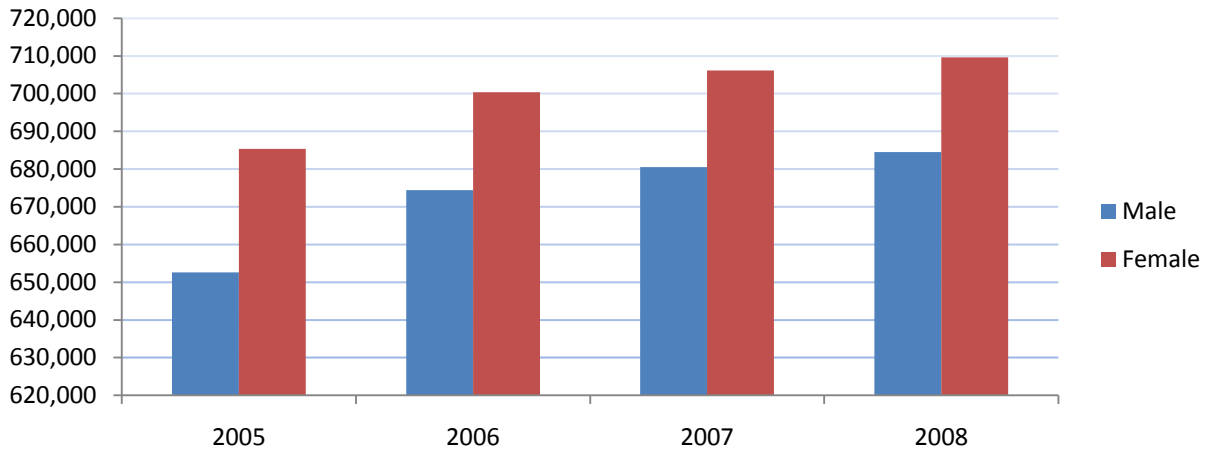
Sacramento County Population



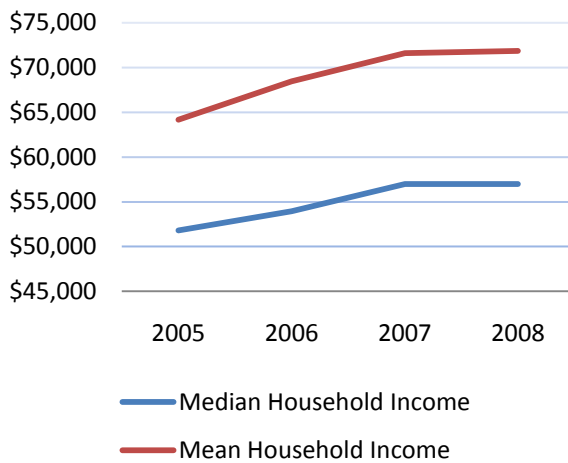
Sacramento County Population by Race



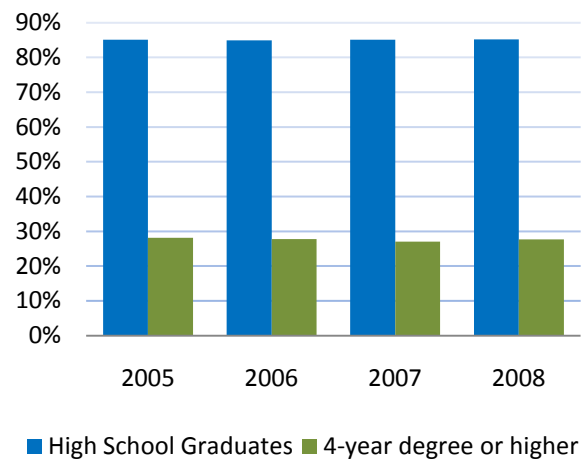
Sacramento Population by Gender



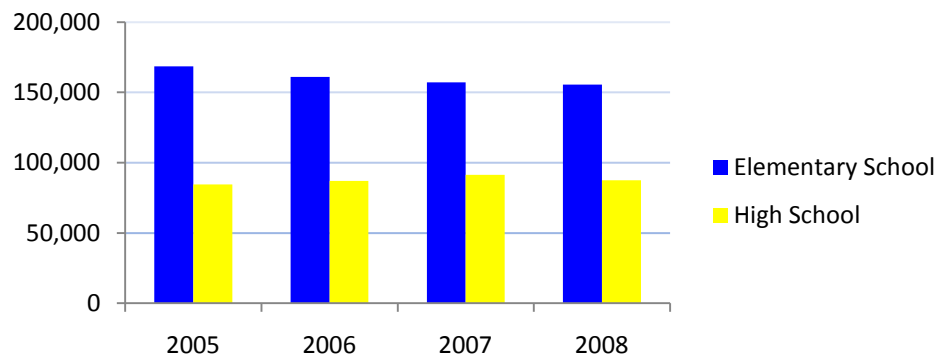
Household Income



Educational Attainment



Sacramento County School Enrollment



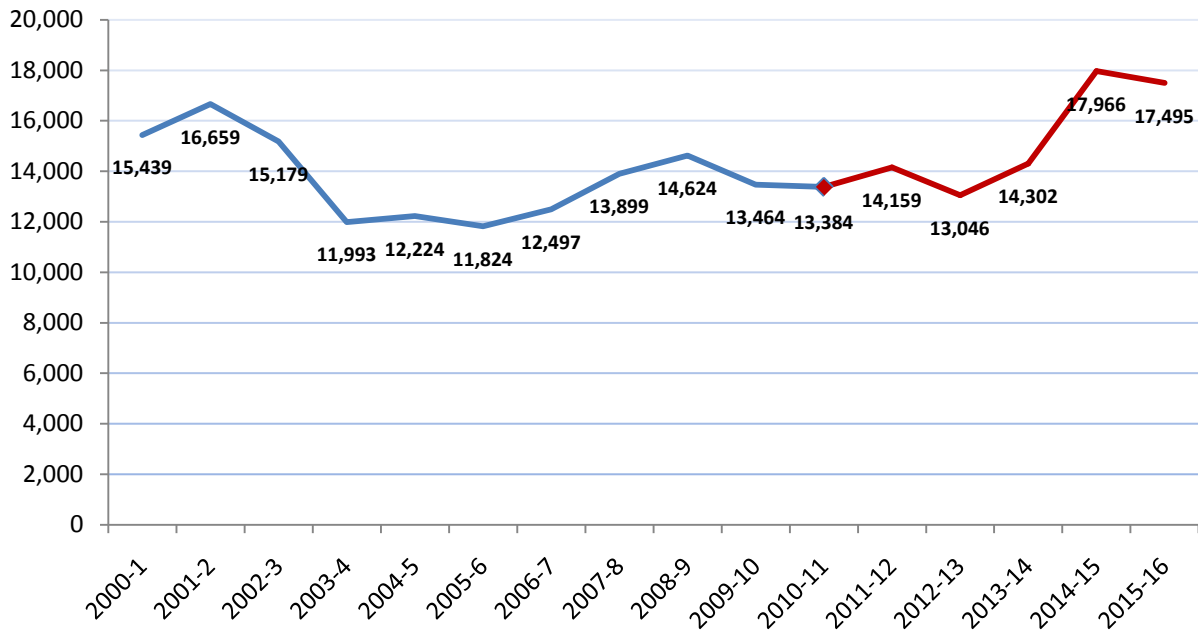
Yuba College Students

The past decade has been a roller coaster ride for student enrollment at Yuba College. During the prosperity of the 1990's the college was growing quickly as families moved to both Yuba and Sutter Counties as result of local job growth and relatively inexpensive housing. That growth ended abruptly as a result of a California State fiscal crisis in 2003 that left higher education in the state with diminished budgets. College enrollments were beginning to recover when the "Great Recession" struck in 2008 once again decimating college budgets. However, the impact on student enrollments was not as large because the nature of the students had changed. Early in the decade, the typical student was enrolling significantly below full-time, but as time and as economic turmoil wore on, the average student became a full-time student.

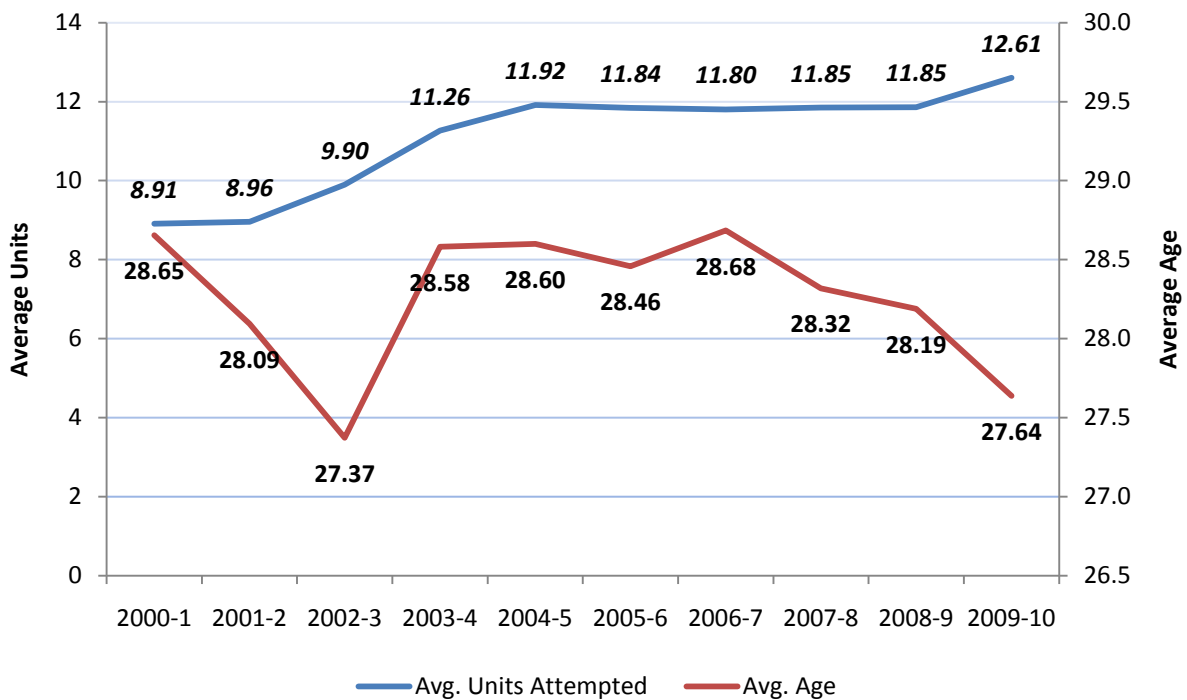
Yuba College has two very distinct demographic regions. Students at the main campus in Marysville tend towards younger, more traditional college students, while students served at the Clear Lake Campus tend towards older, re-entry students. Further, because the ethnic composition of Lake County is very different than the Yuba and Sutter Counties, the ethnic diversity on the campuses is markedly different. On the main campus, Caucasian/White students are the largest ethnic group, but they are not a majority. In contrast, at CLC Caucasian/White students make up nearly $\frac{3}{4}$ of the student population.

*The Full-time Equivalent Students (FTES) reported for the 2009-10 school year is artificially low due to a data storage error.

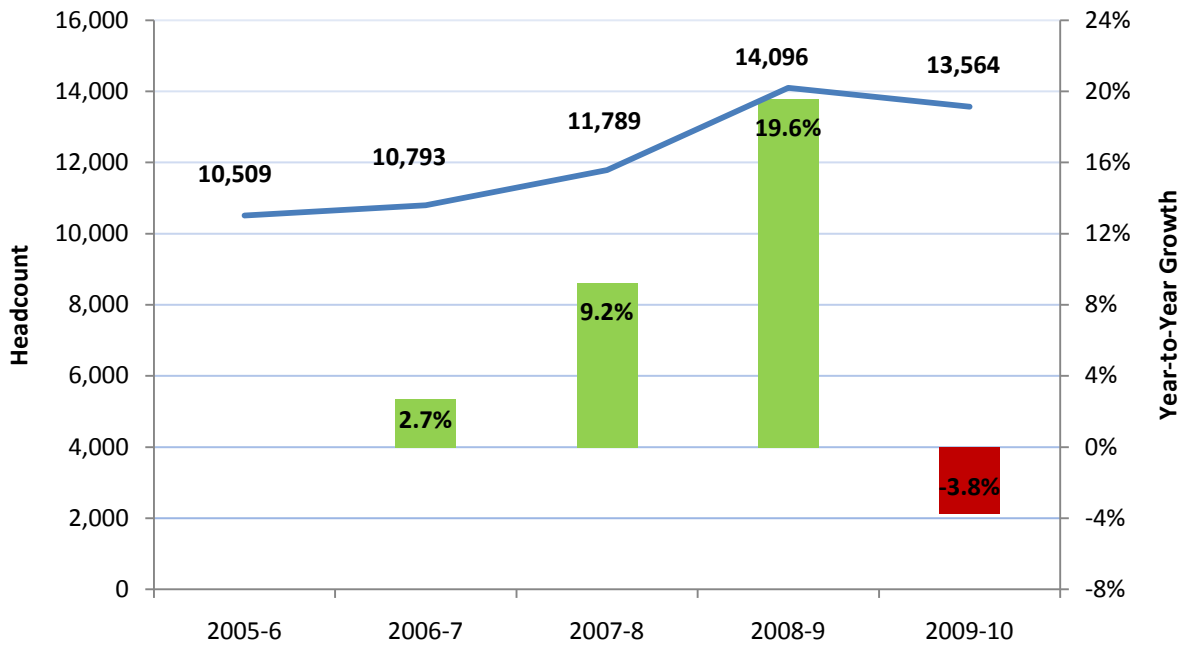
Yuba College: Past and Projected Headcount



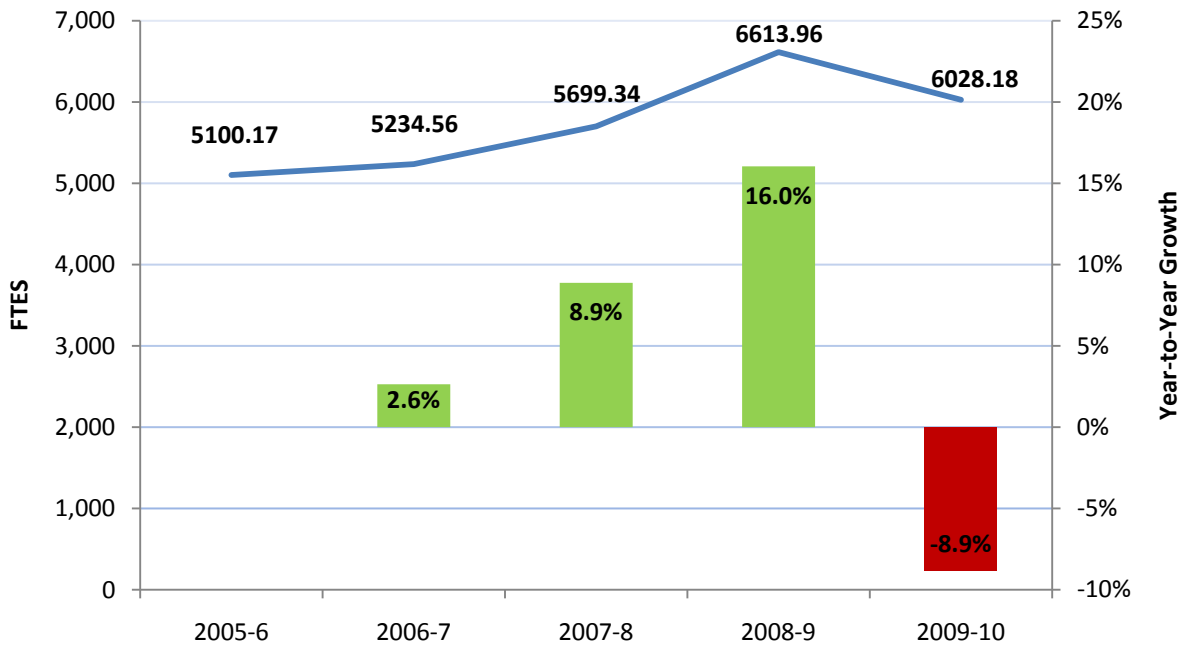
Average Units Attempted and Age



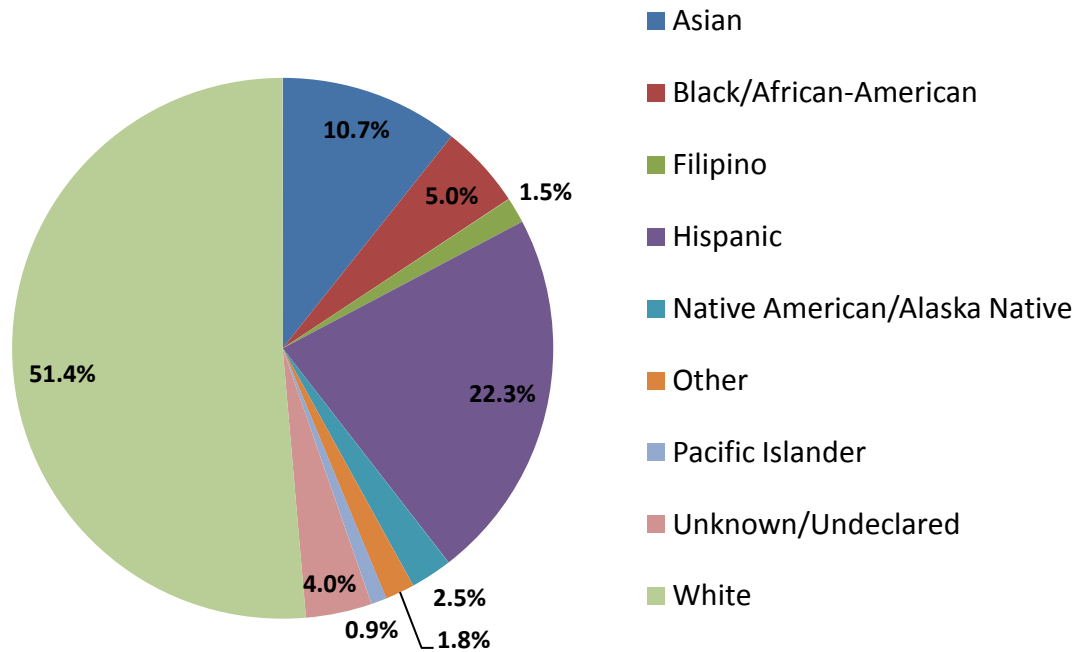
Student Headcount



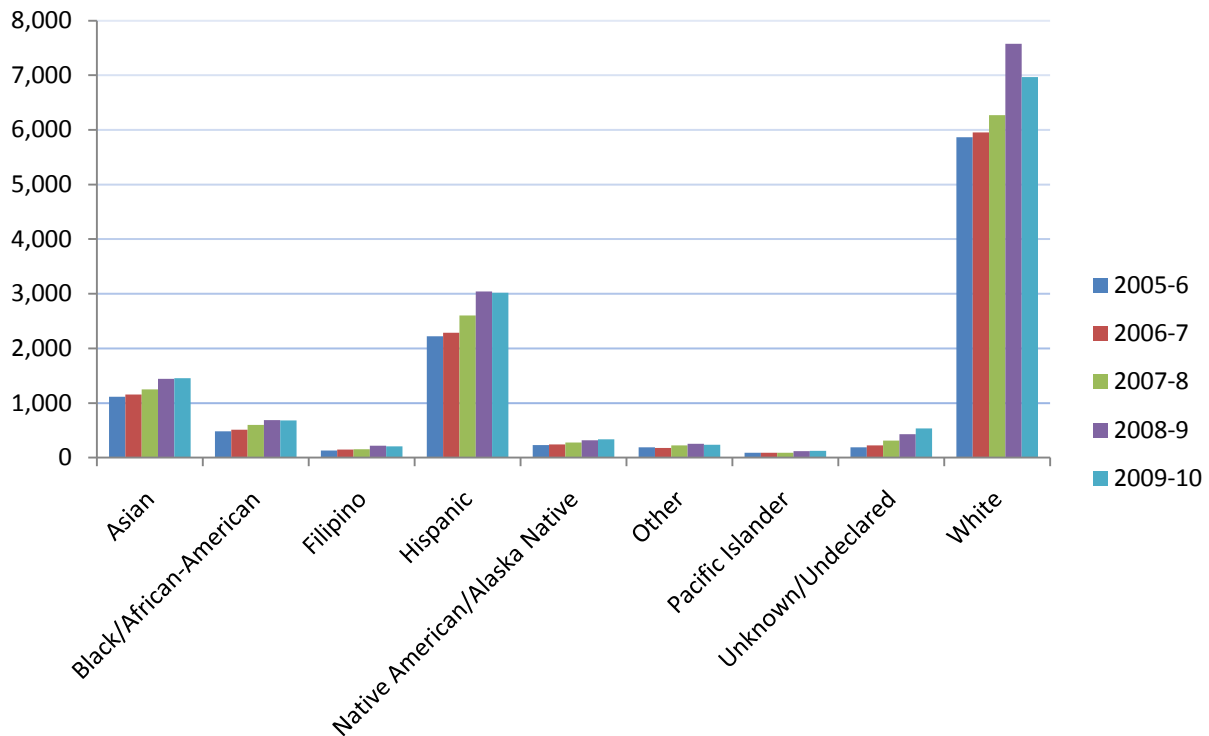
Full-Time Equivalent Students



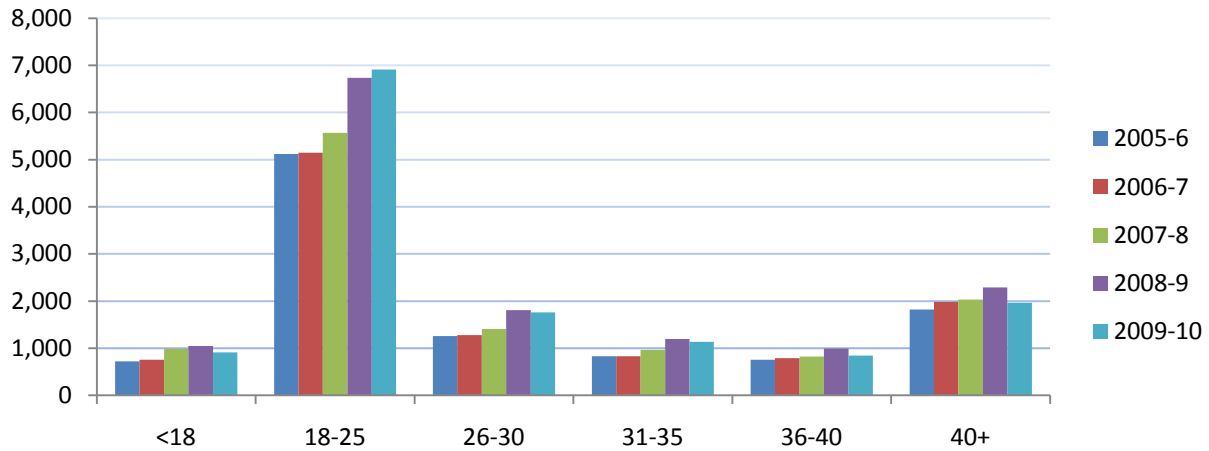
Race and Ethnicity 2009-10



Race and Ethnicity by Year



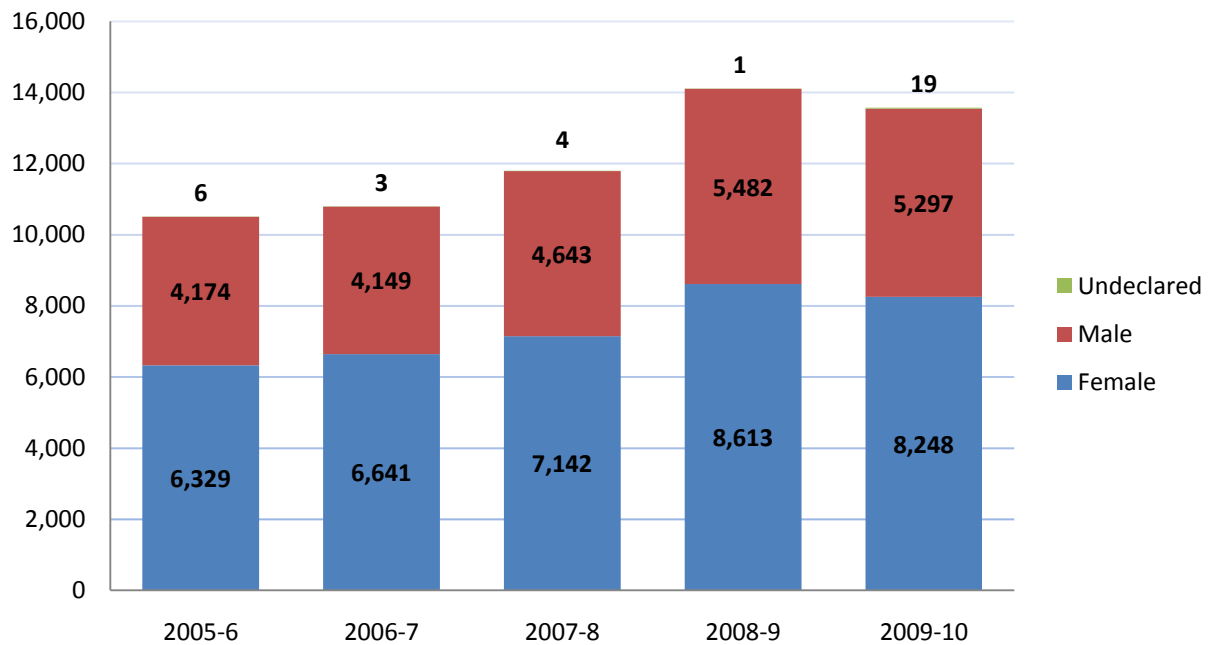
Age Distribution



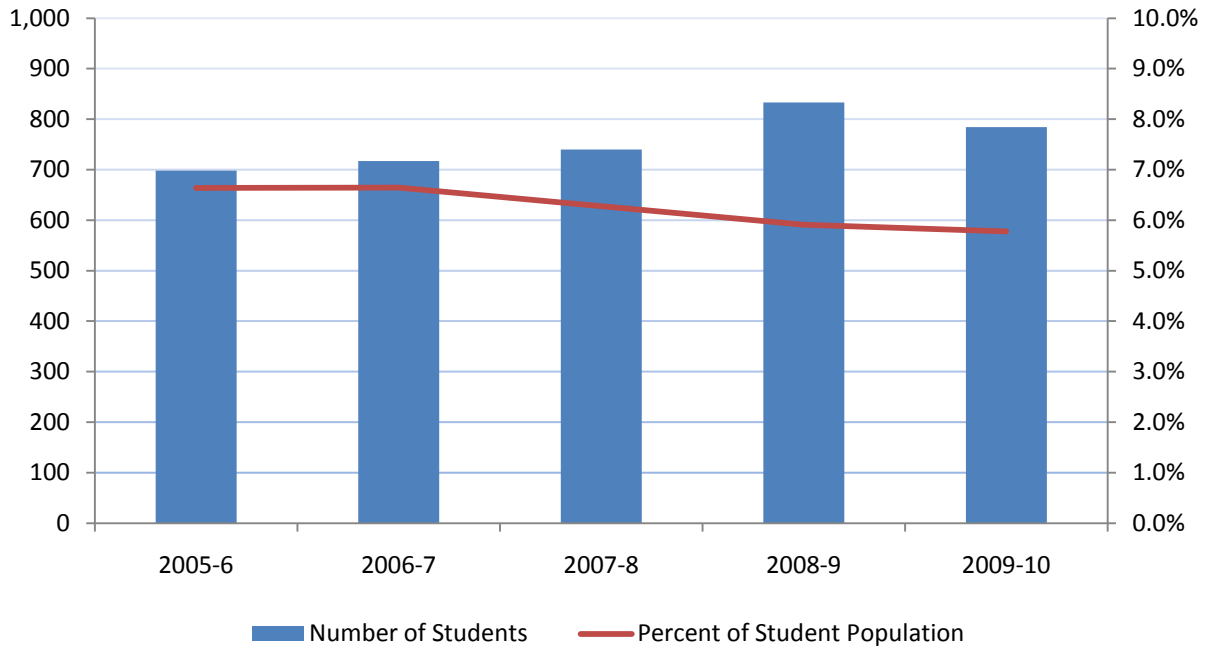
Age

	2005-6	2006-7	2007-8	2008-9	2009-10
Average	28.4	28.8	28.3	28.3	27.6
Min	14	13	11	12	13
Max	82	83	84	85	85

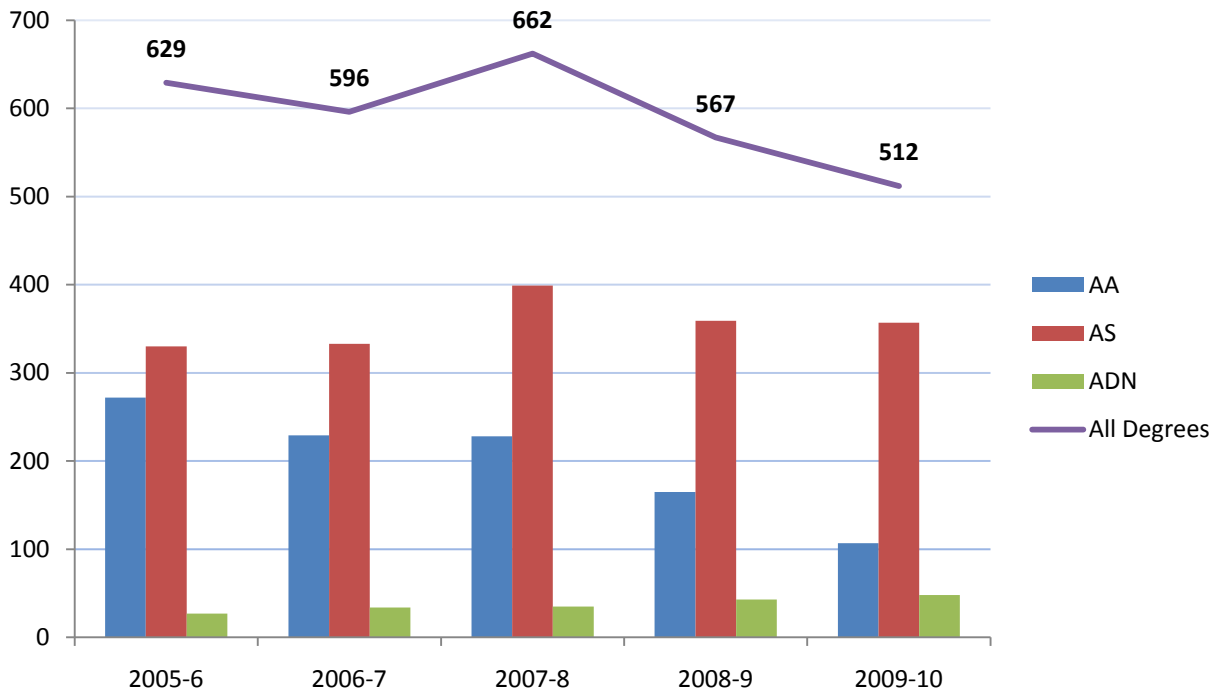
Gender



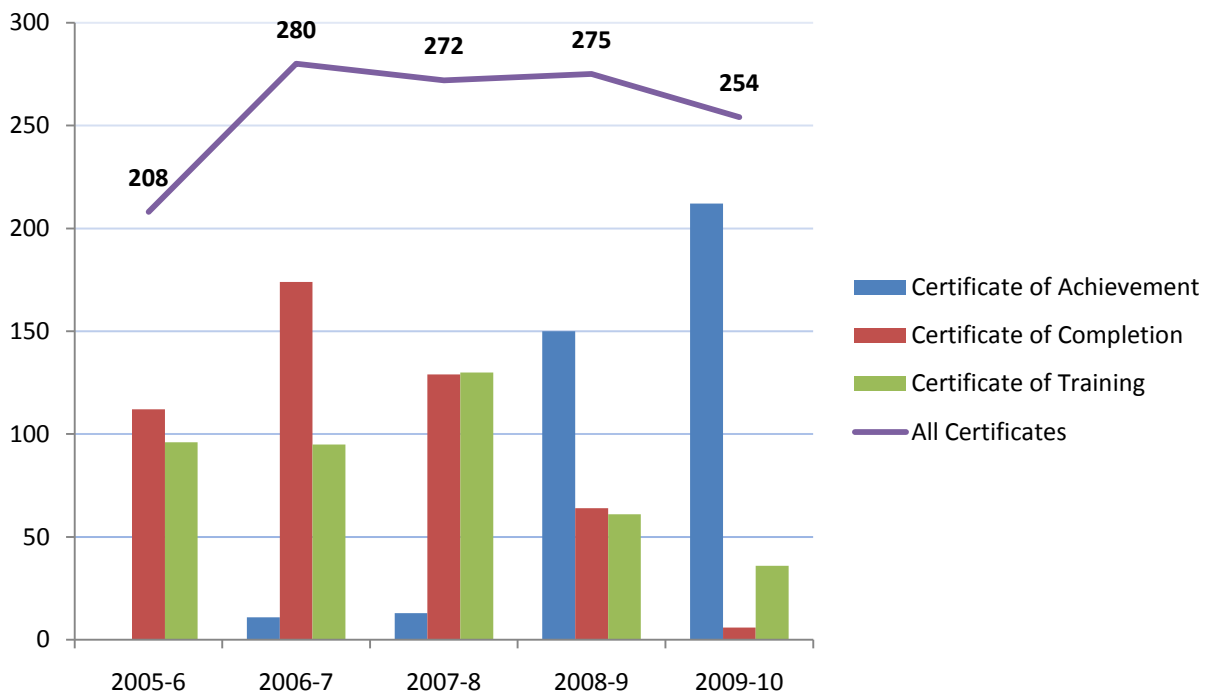
Students with Disabilities



Degrees Awarded

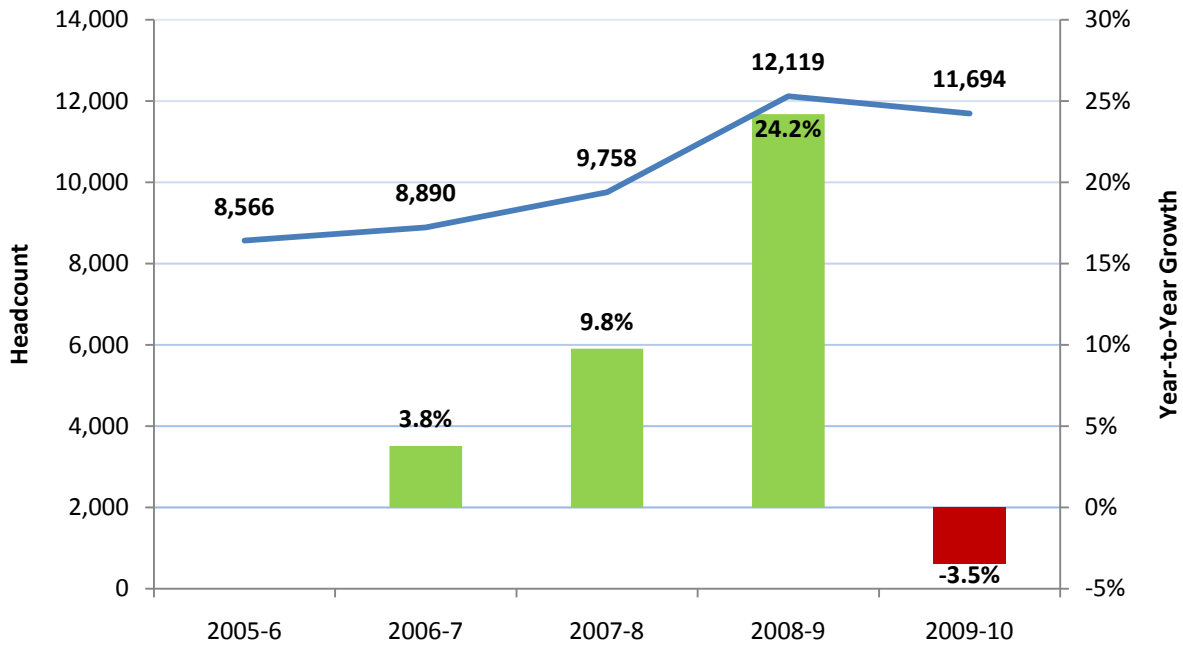


Certificates Awarded

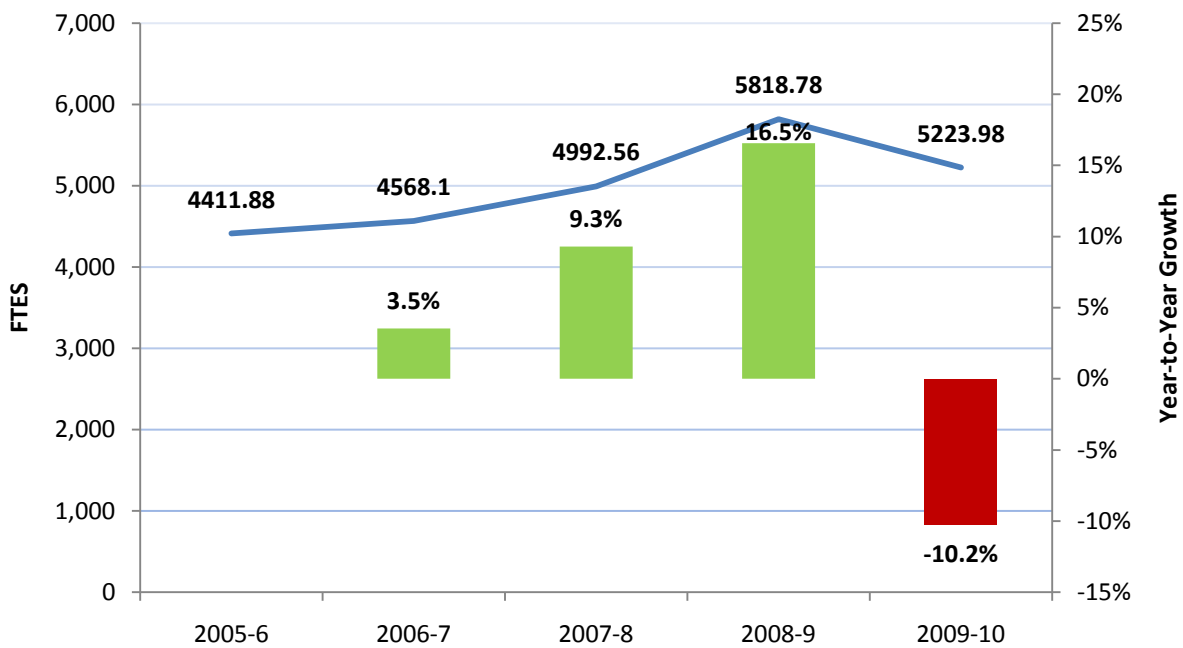


Marysville Campus

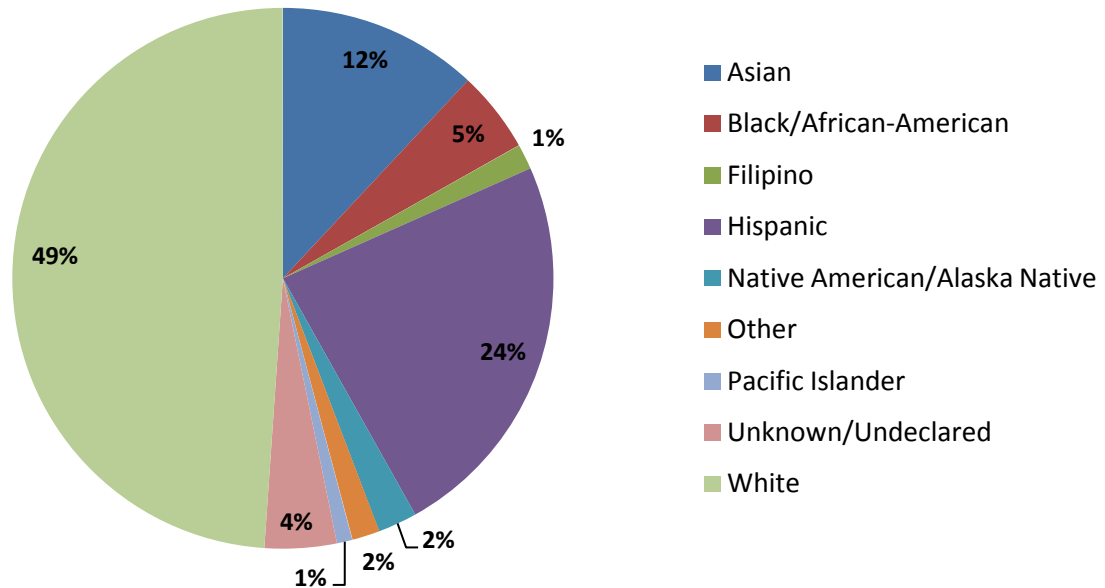
Headcount



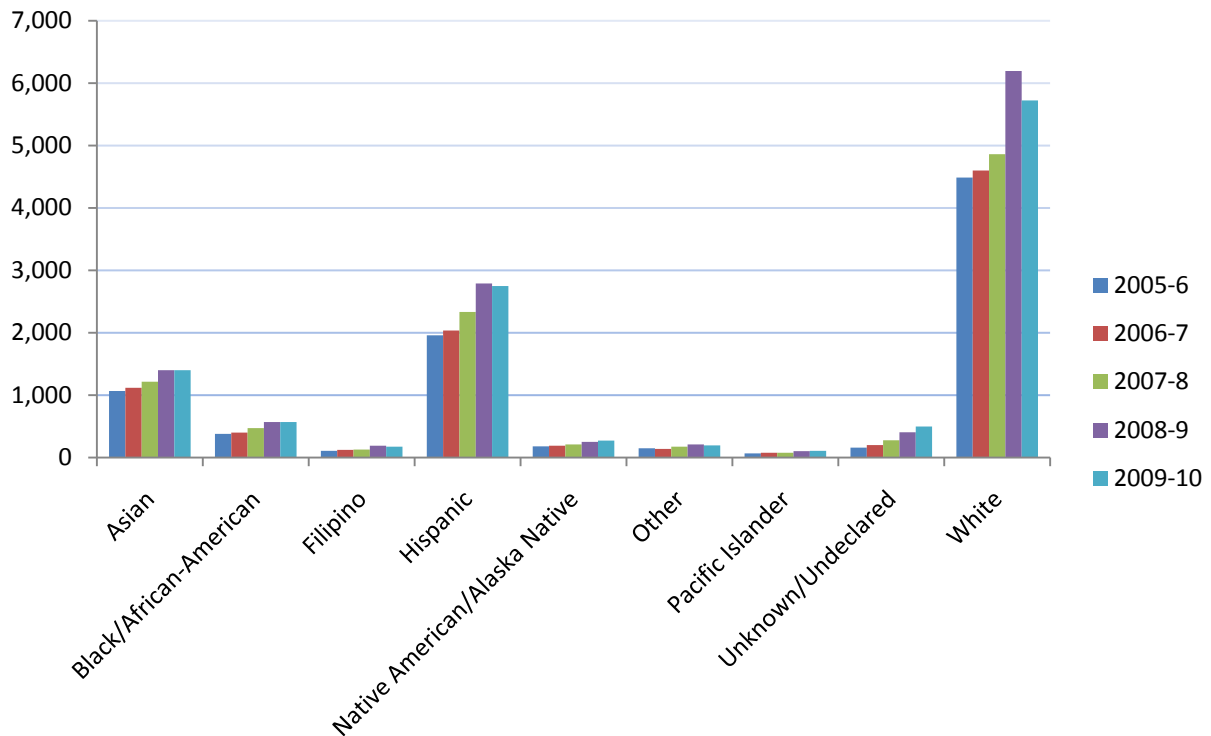
Full-Time Equivalent Students



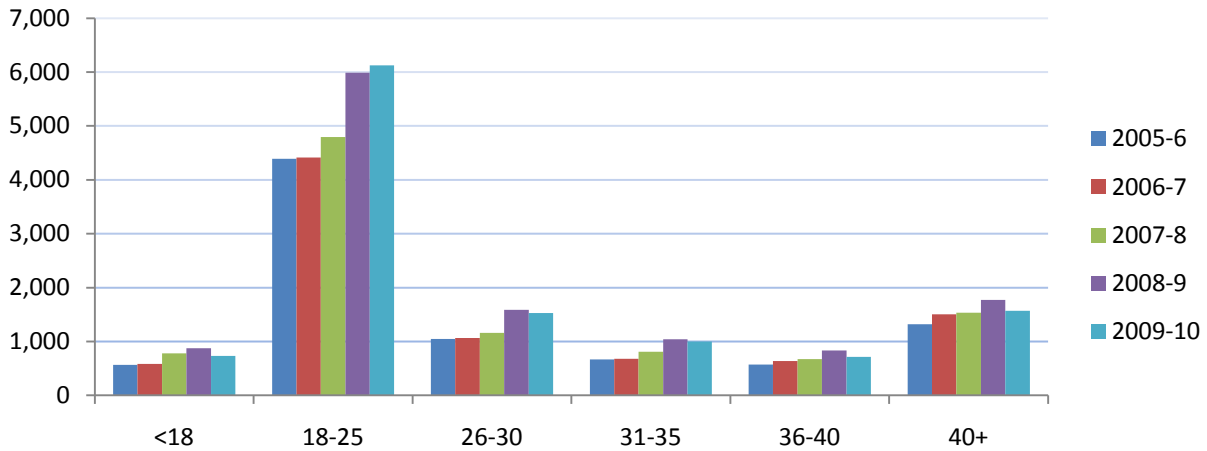
Race and Ethnicity 2009-10



Race and Ethnicity by Year



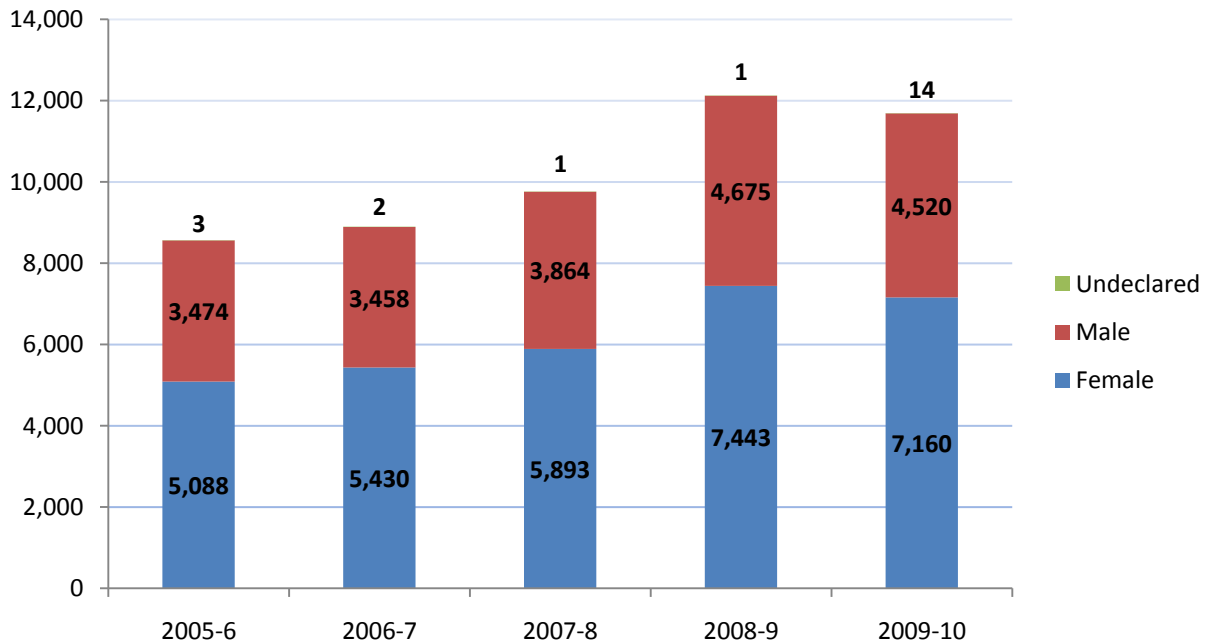
Age Distribution



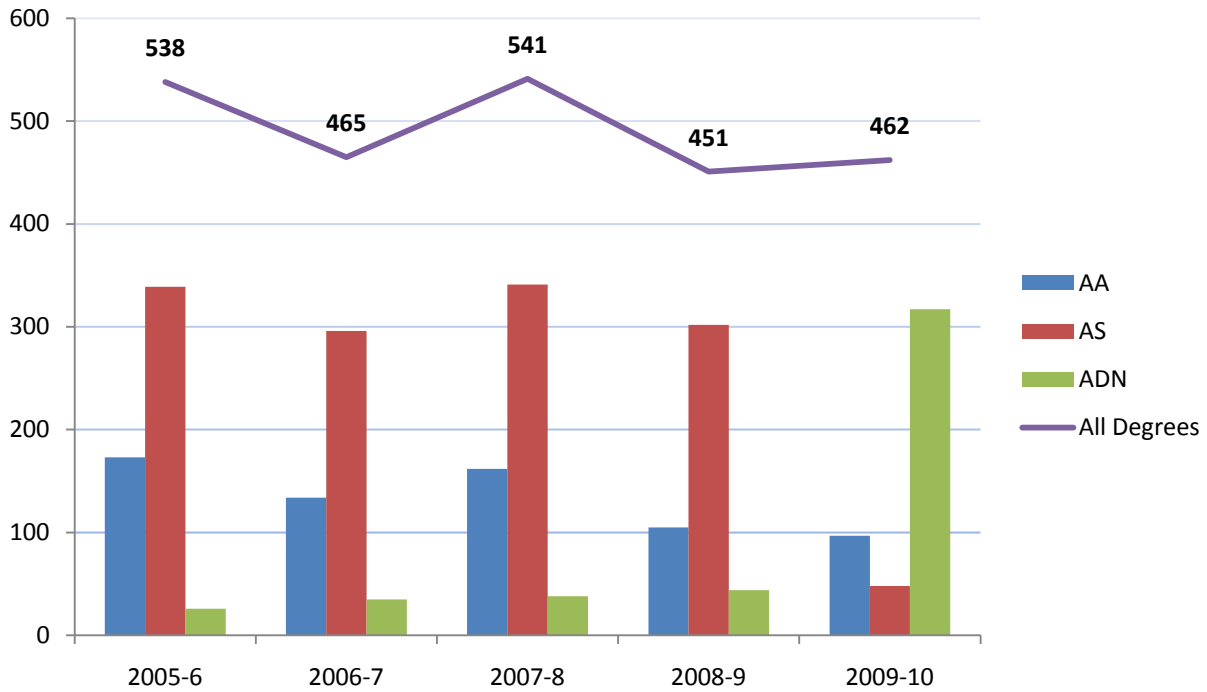
Age

	2005-6	2006-7	2007-8	2008-9	2009-10
Average	27.7	28.3	27.8	26.7	27.3
Min	14	13	11	13	13
Max	82	83	84	85	85

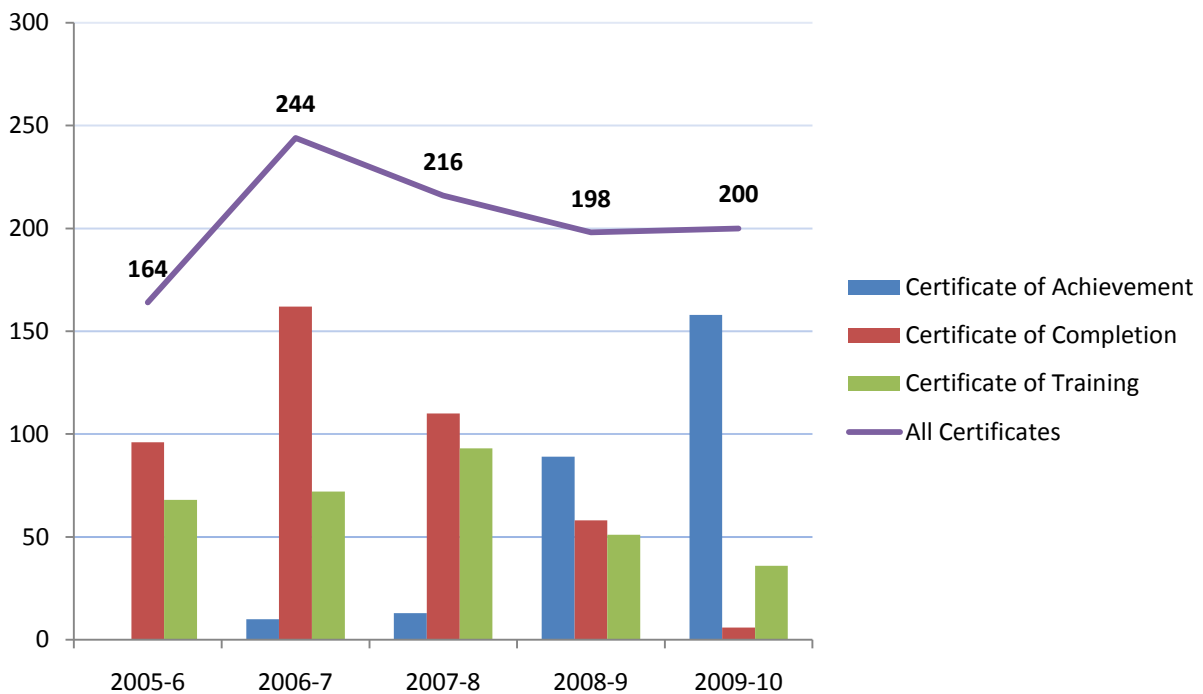
Gender



Degrees Awarded

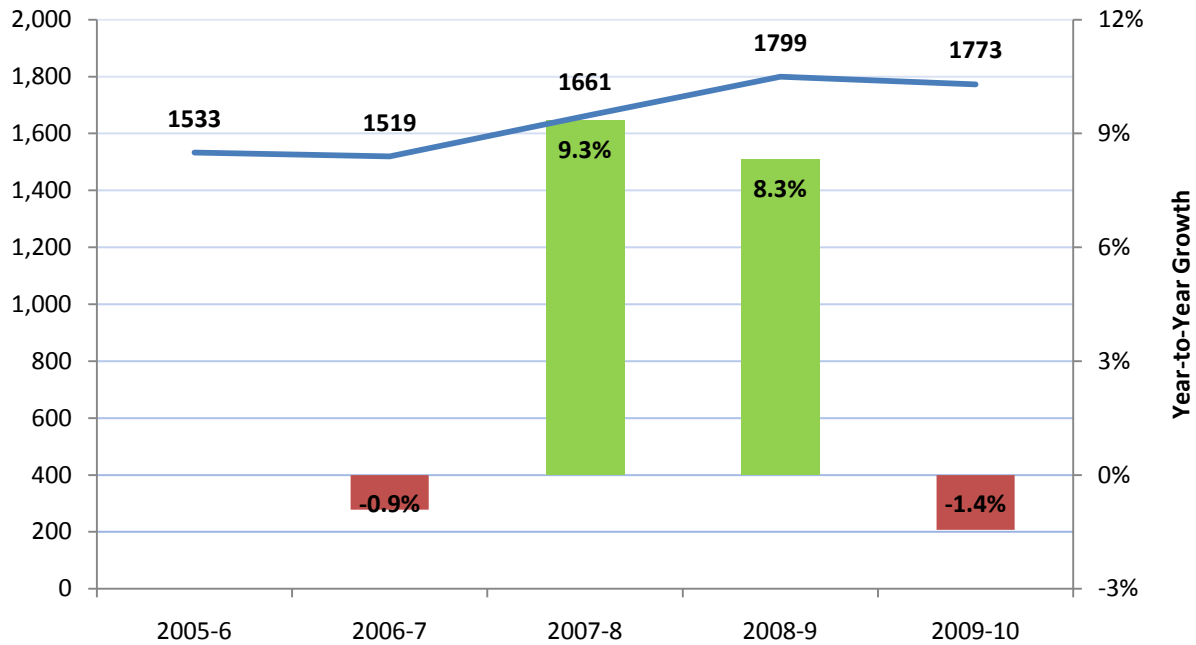


Certificates Awarded

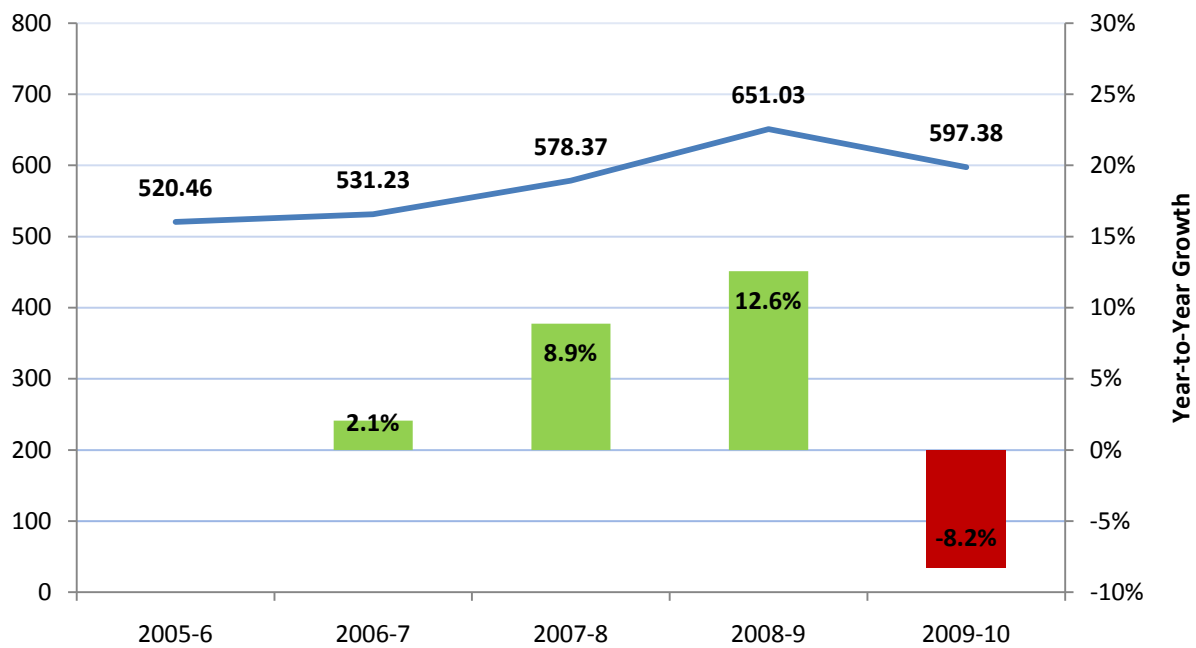


Clear Lake Campus

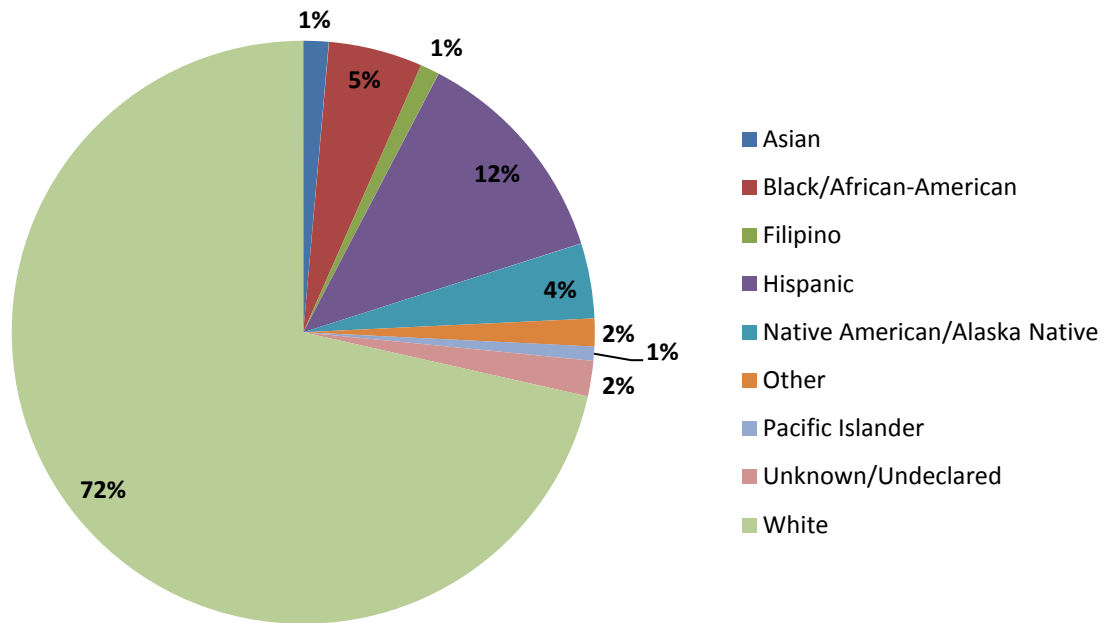
Headcount



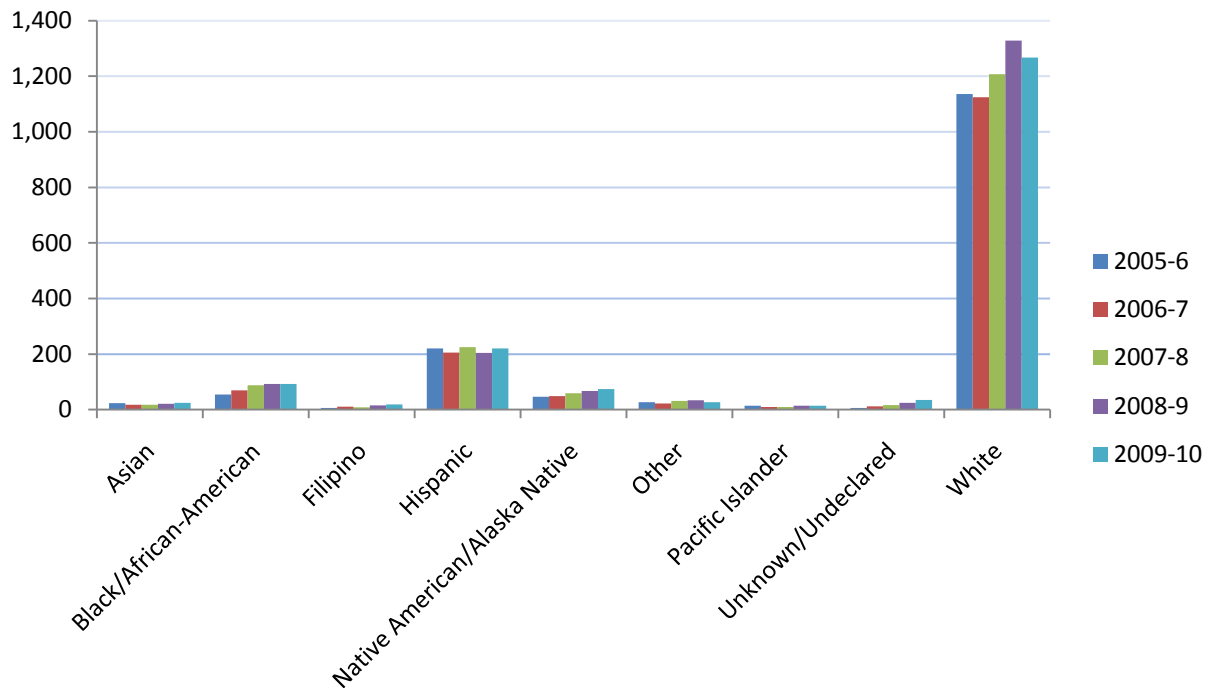
Full-time Equivalent Students



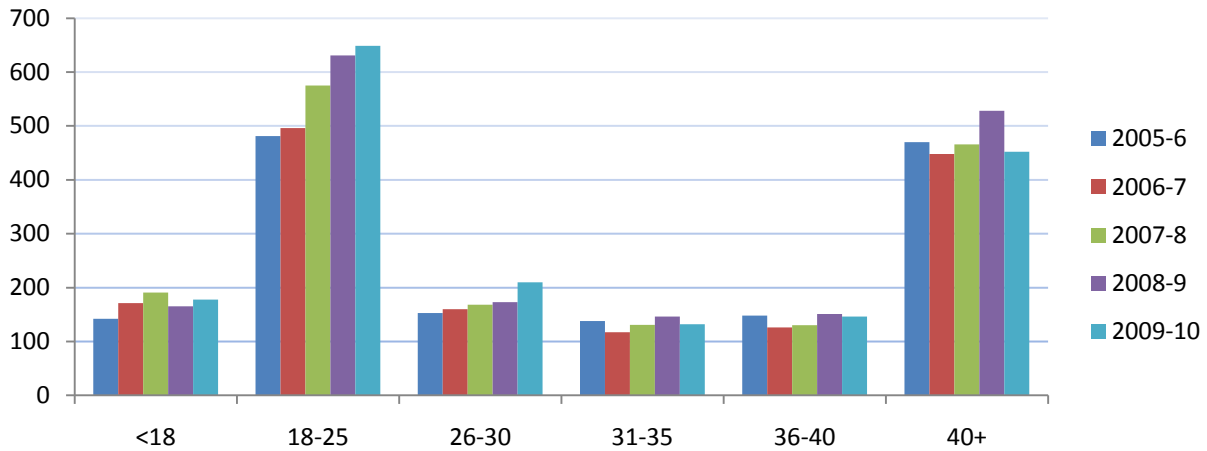
Race and Ethnicity 2009-10



Race and Ethnicity by Year



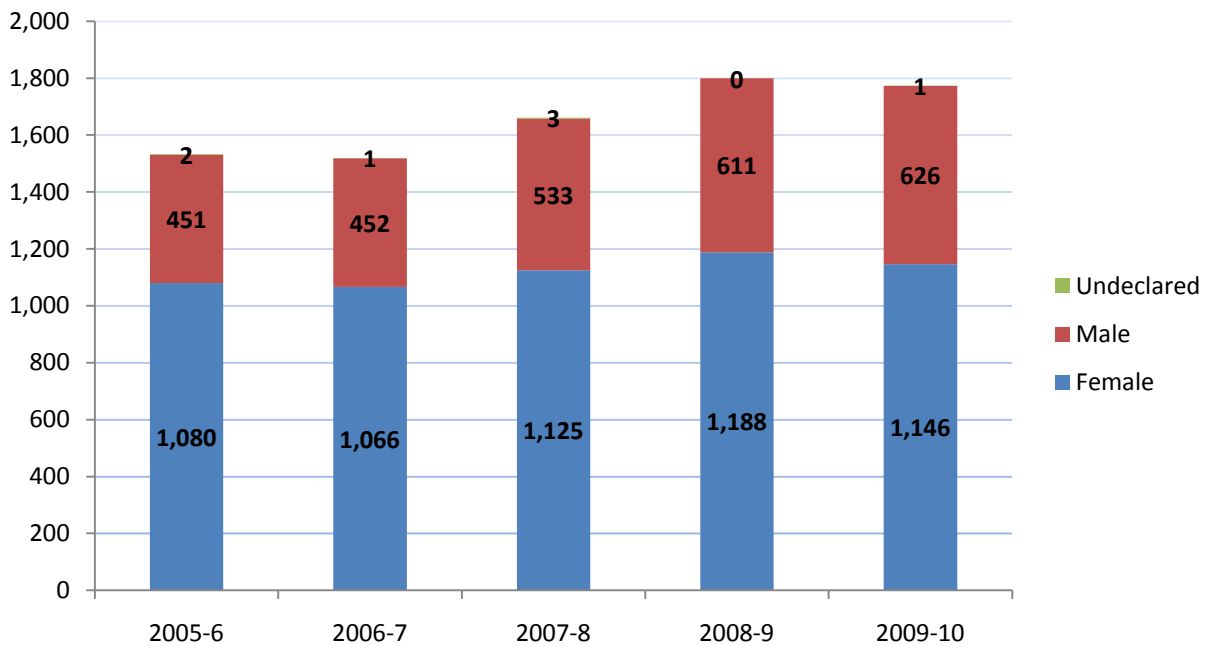
Age Distribution



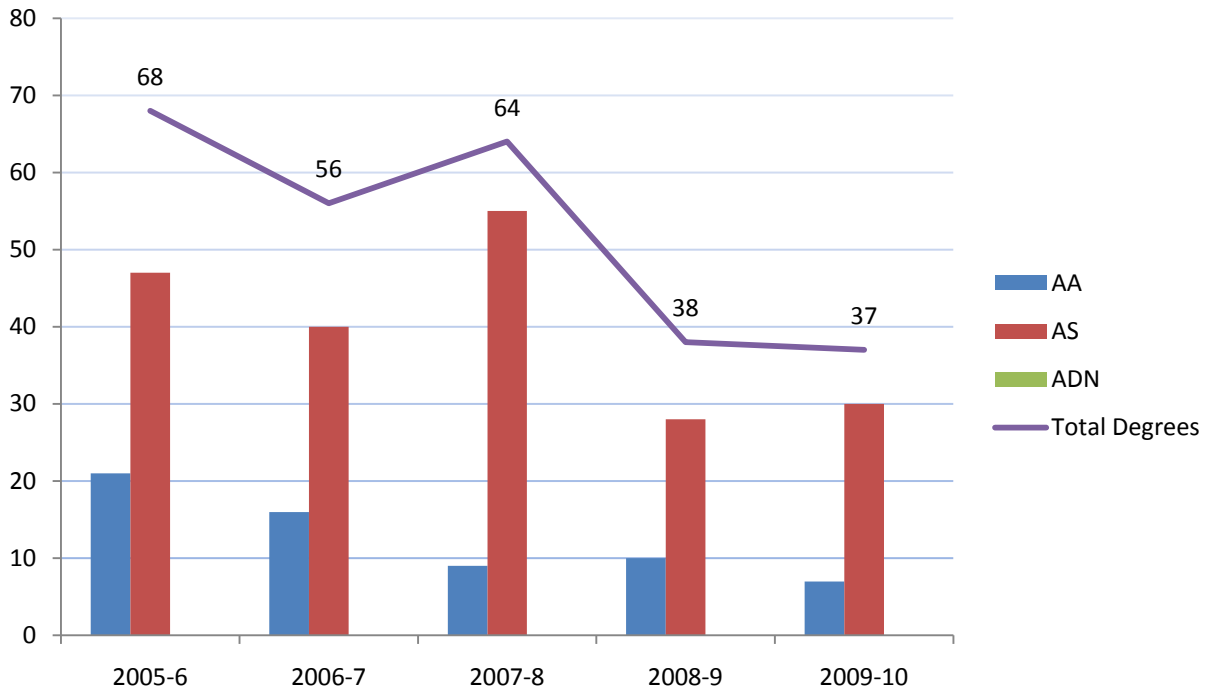
Age

	2005-6	2006-7	2007-8	2008-9	2009-10
Average	32.9	32.1	31.7	32.4	31.3
Min	14	13	13	12	13
Max	79	83	81	81	85

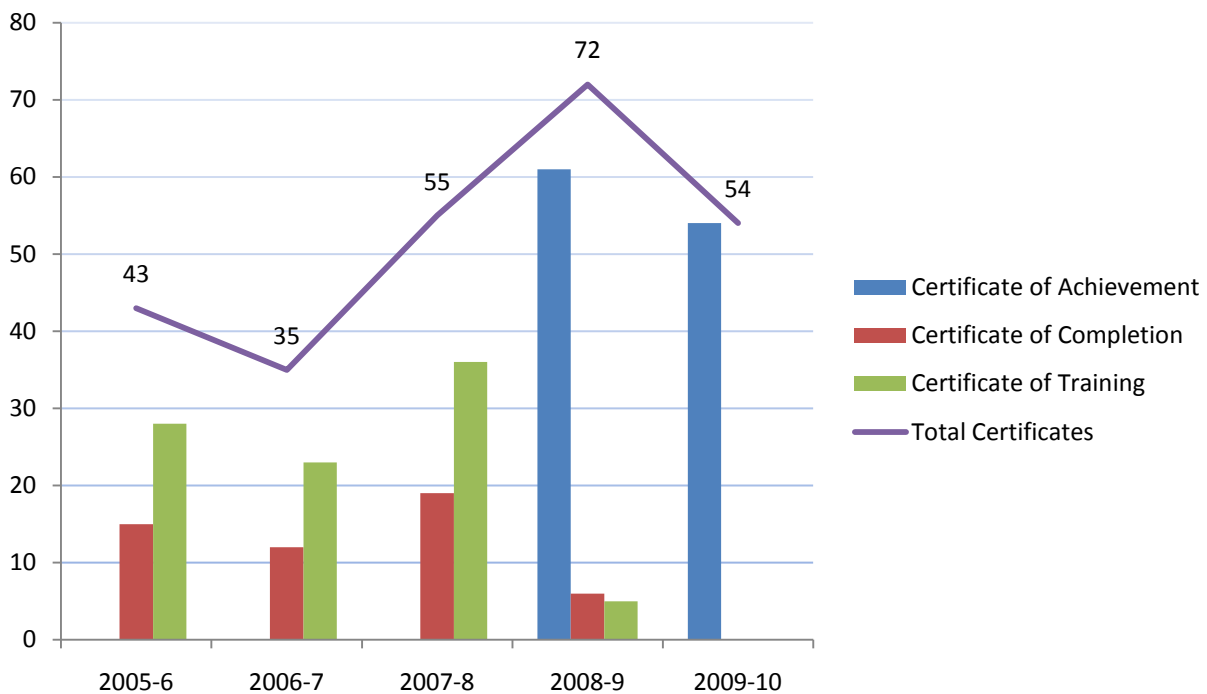
Gender



Degrees Awarded

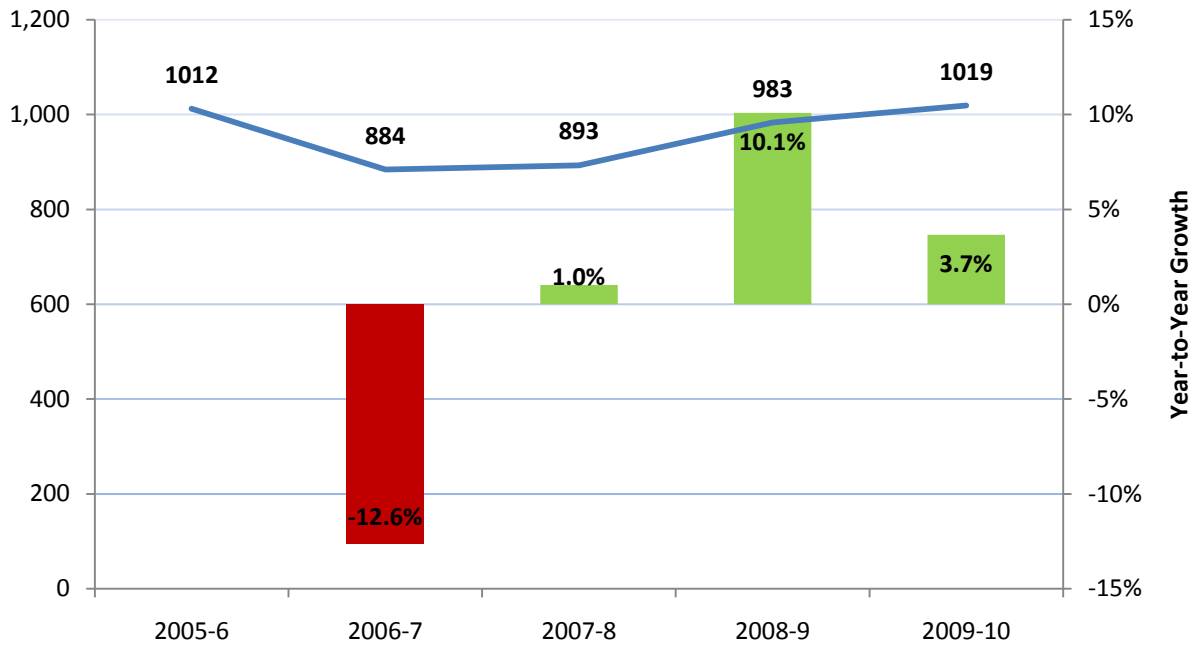


Certificates Awarded

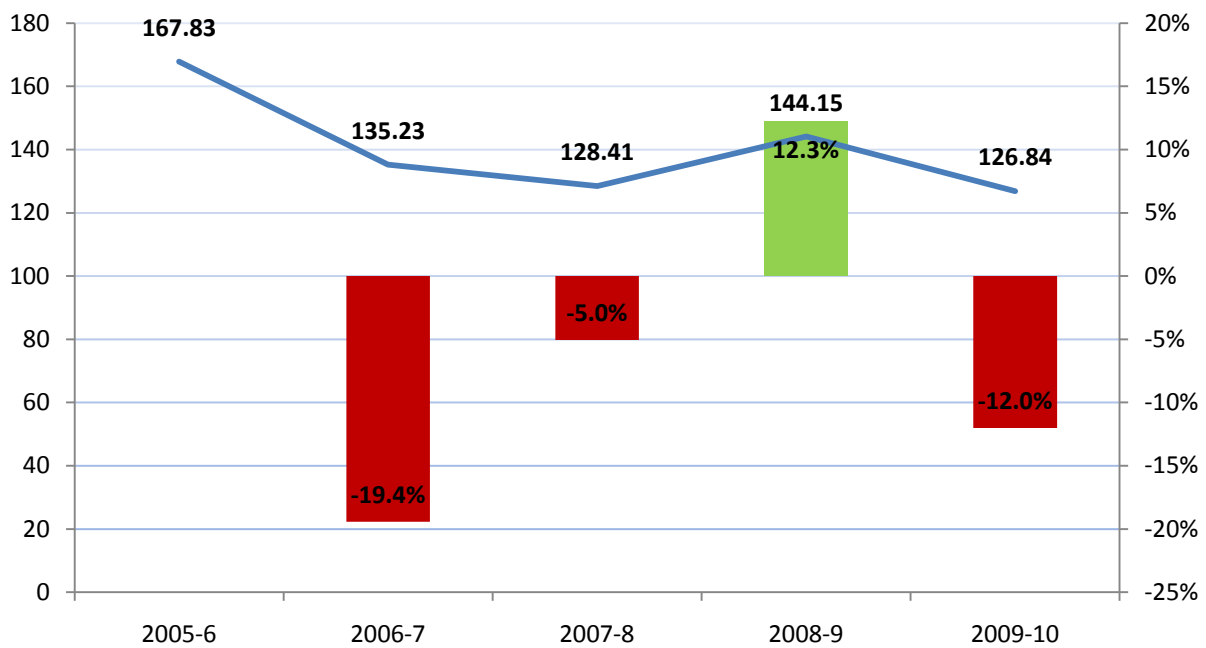


Beale AFB Outreach Center

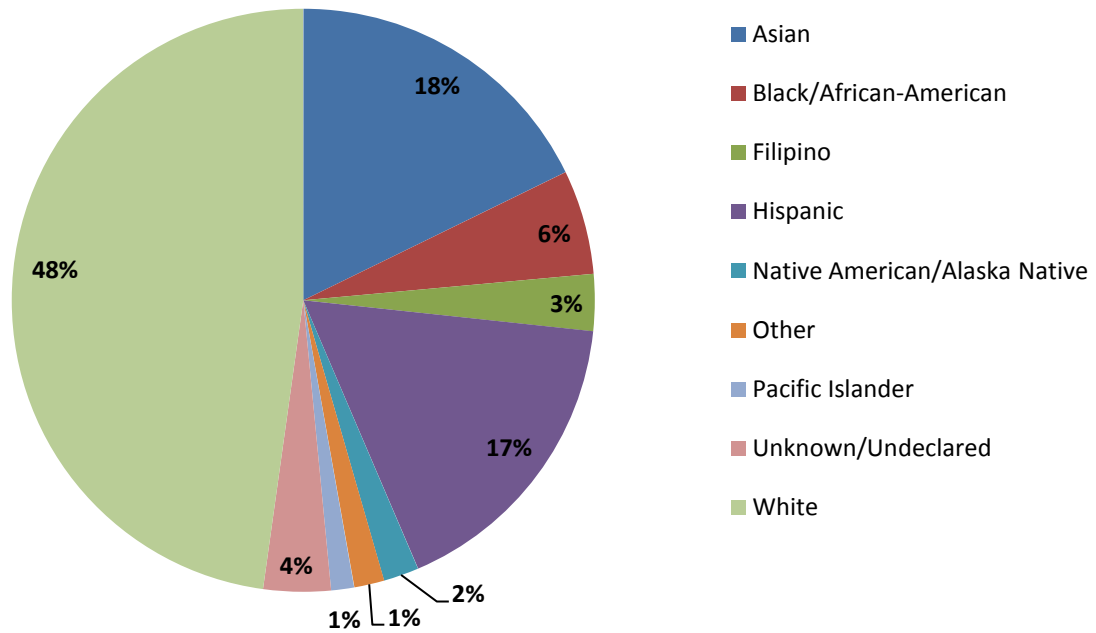
Headcount



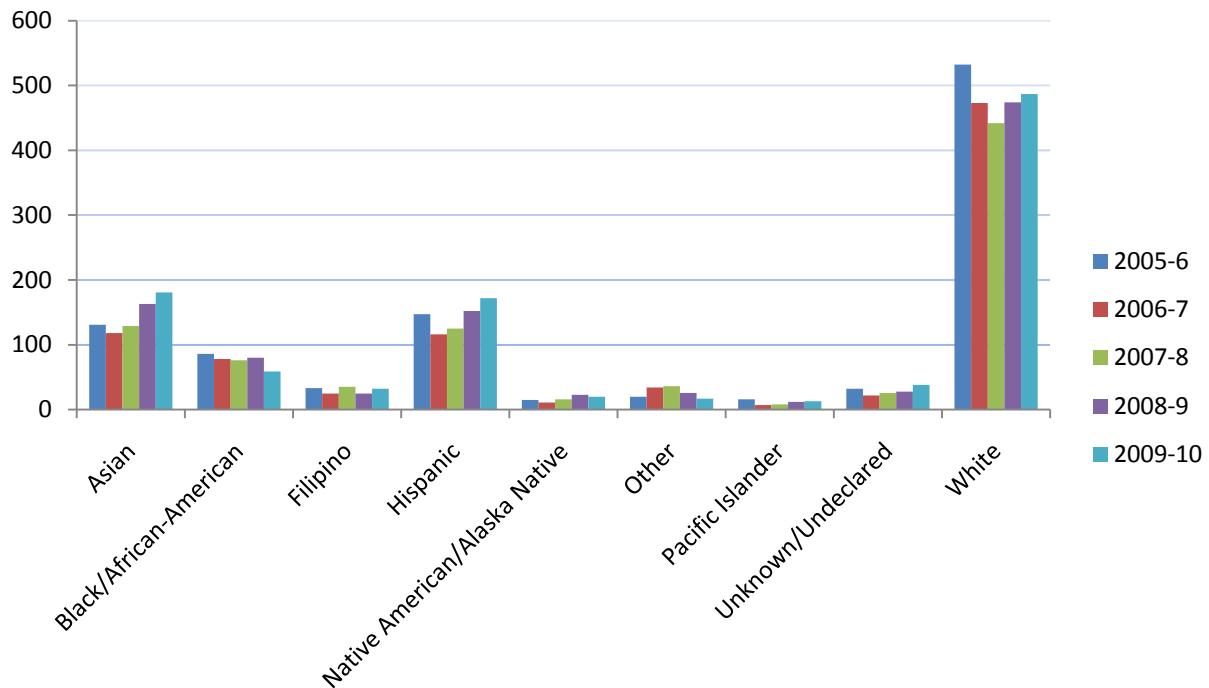
Full-time Equivalent Students



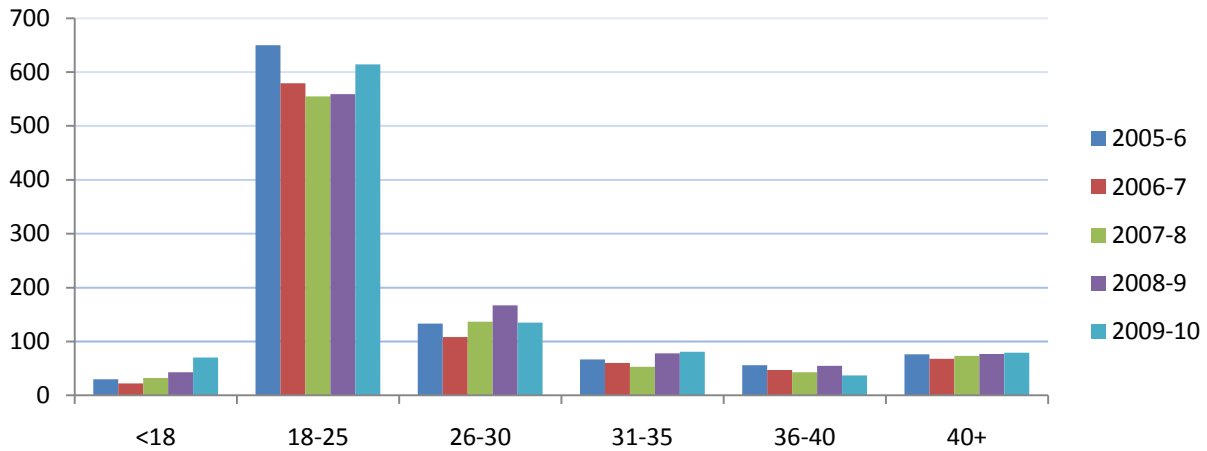
Race and Ethnicity 2009-10



Race and Ethnicity by Year



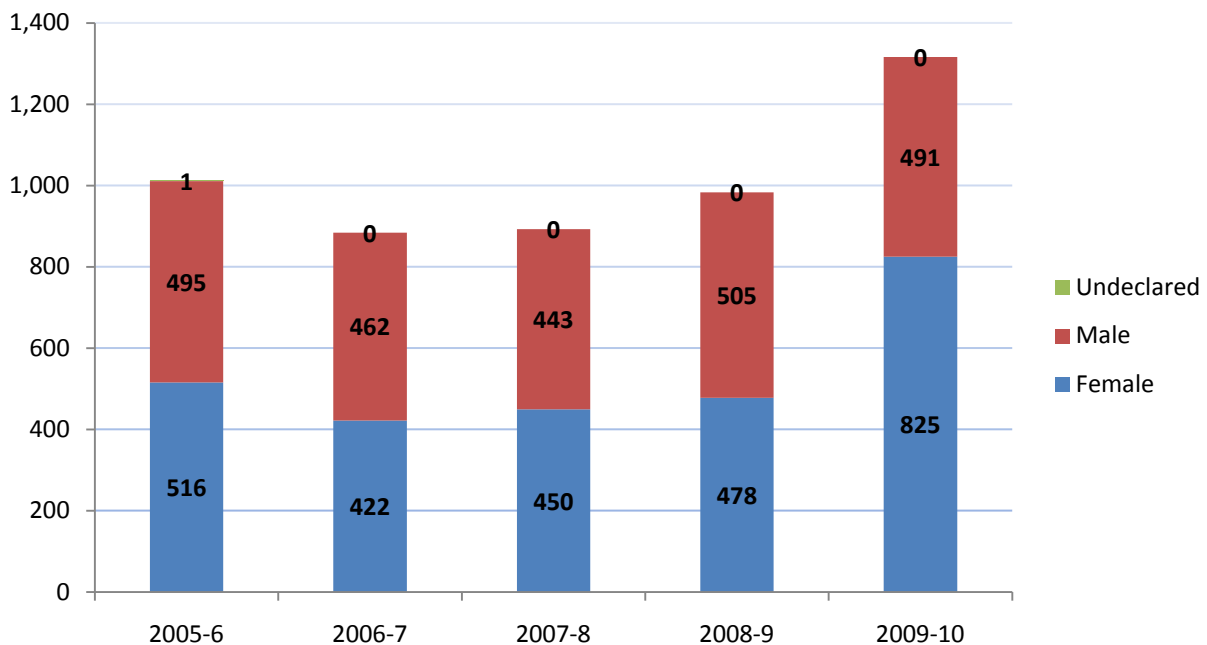
Age Distribution



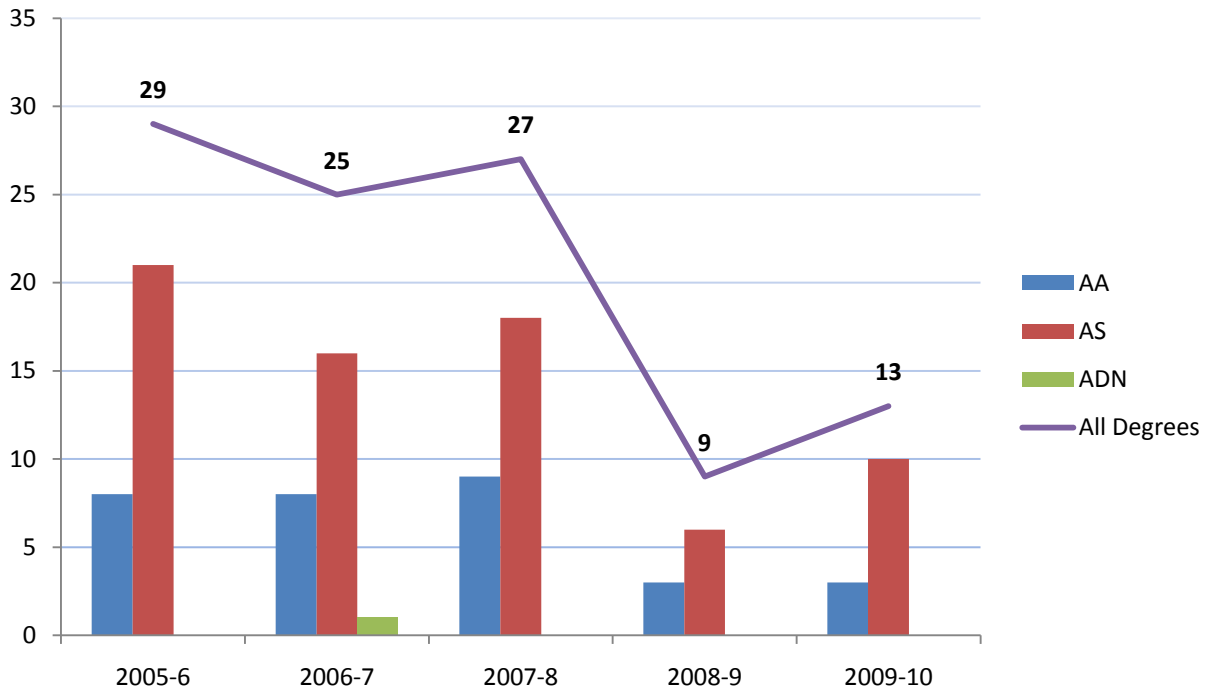
Age

	2005-6	2006-7	2007-8	2008-9	2009-10
Average	25.4	25.5	25.6	26.1	25.2
Min	16	15	13	12	13
Max	66	72	66	65	70

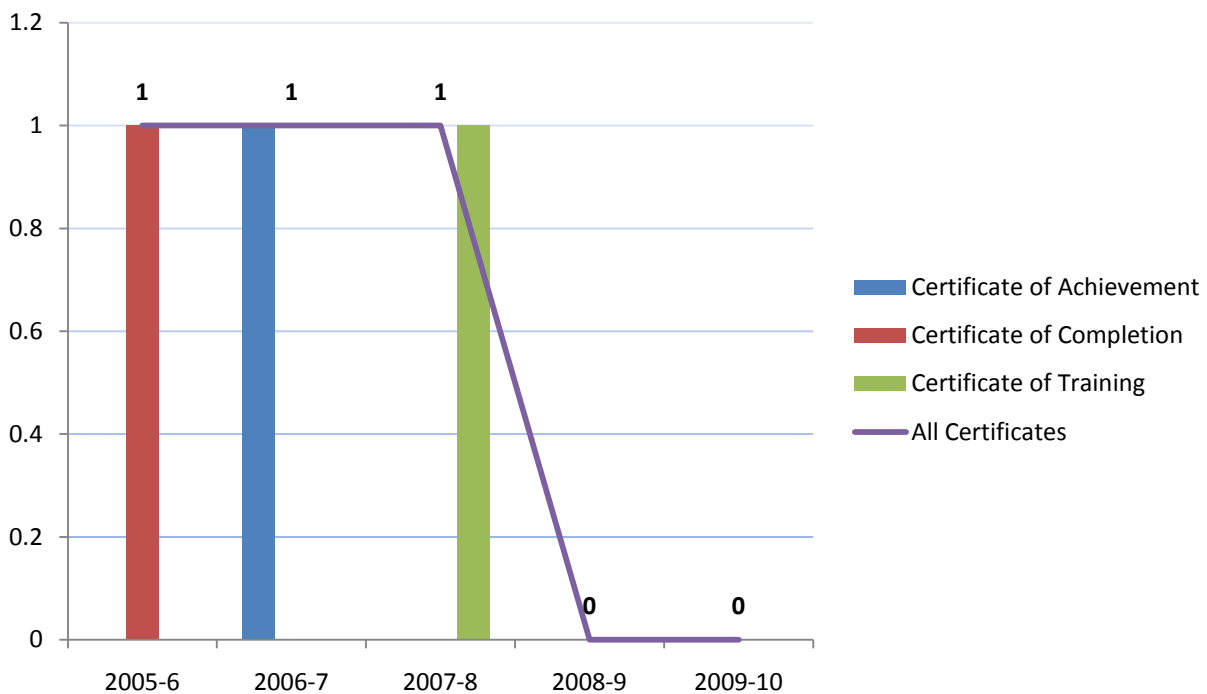
Gender



Degrees Awarded



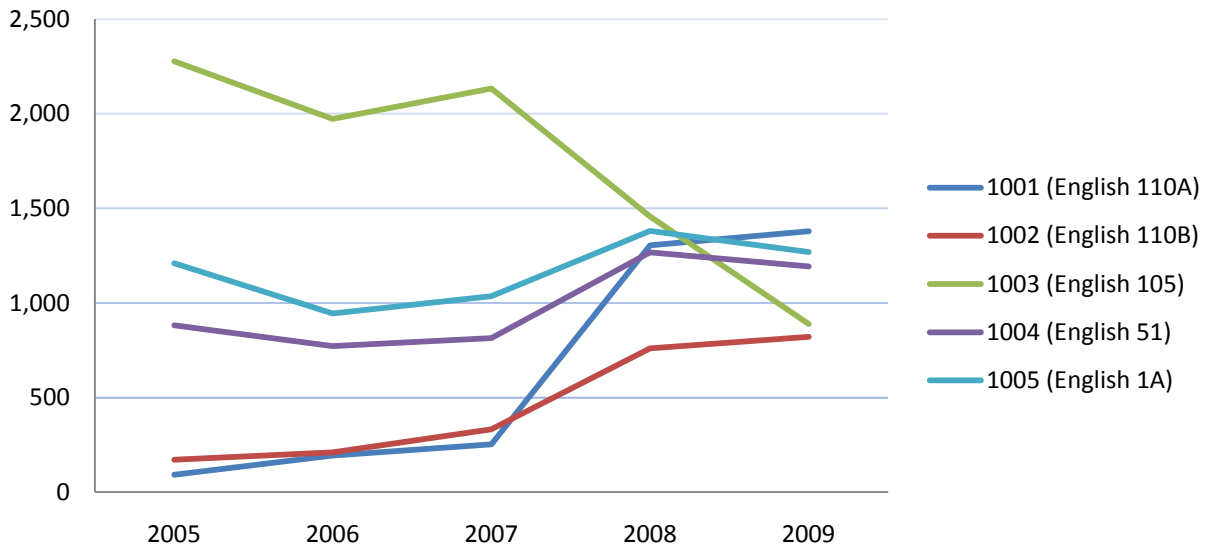
Certificates Awarded



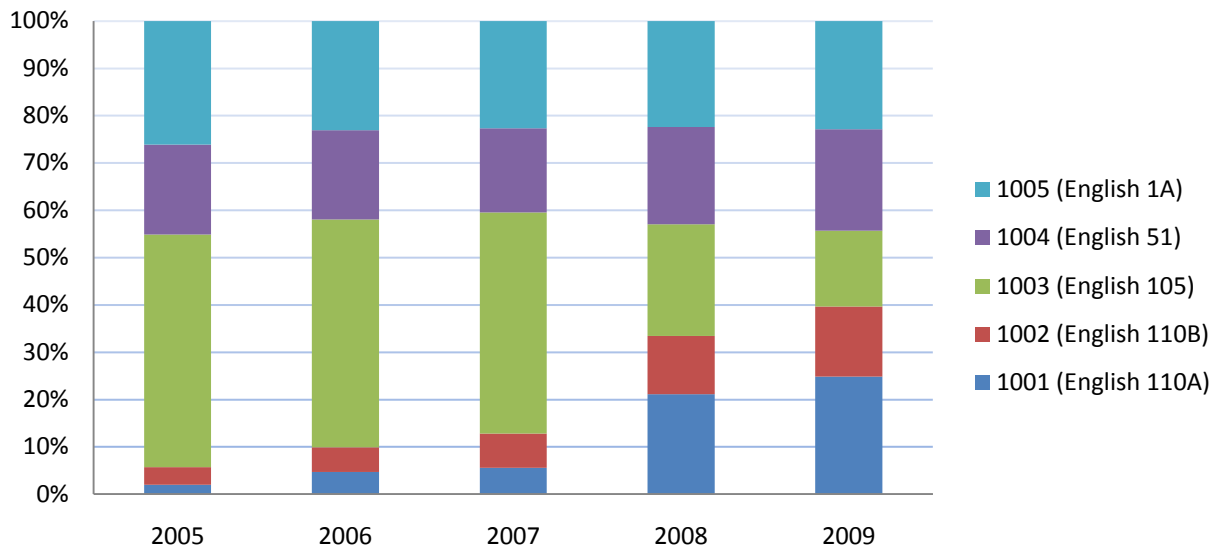
Student Placement

The Yuba Community College District uses a computer based assessment and placement system, Accuplacer, to place incoming students into the appropriate level of reading, English, and mathematics. Beginning in the fall of 2011, YCCD will place students into ESL courses based on electronic assessment. Since Woodland Community College was part of Yuba College through the summer of 2008, assessment data is not available for Yuba College alone until fall 2008; therefore, placement results are presented for the district as a whole.

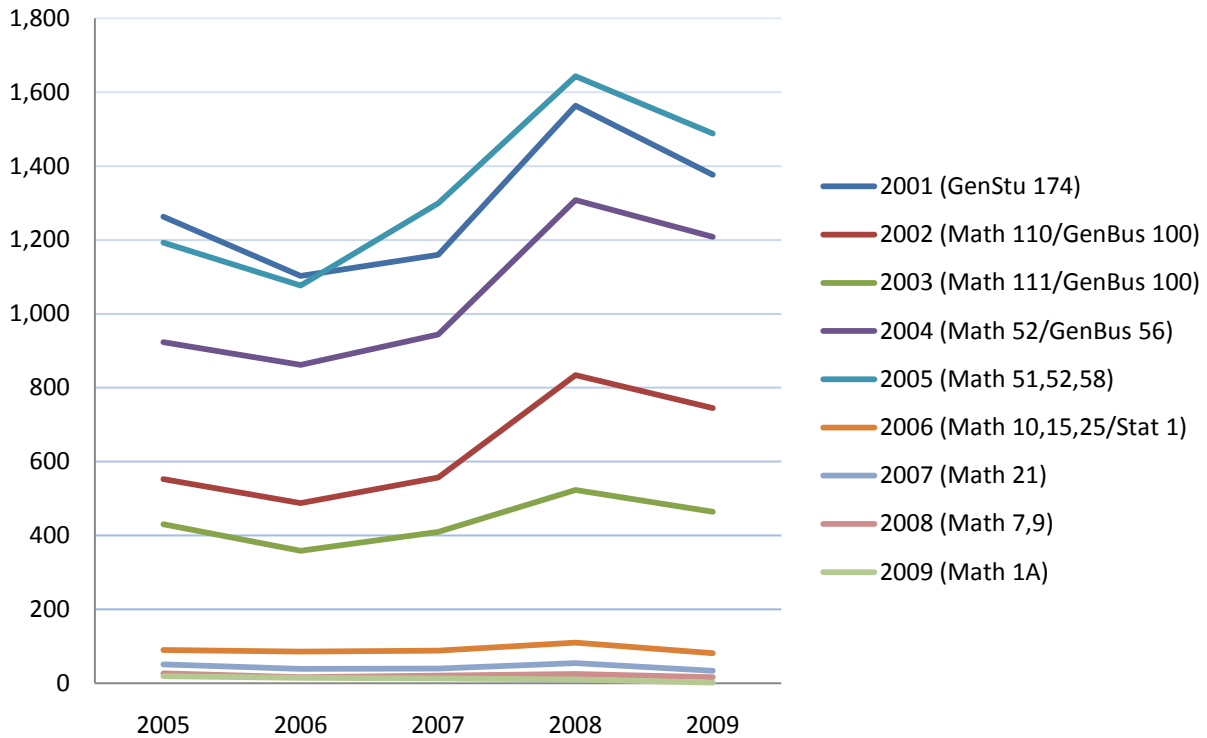
English Placement Level by Year



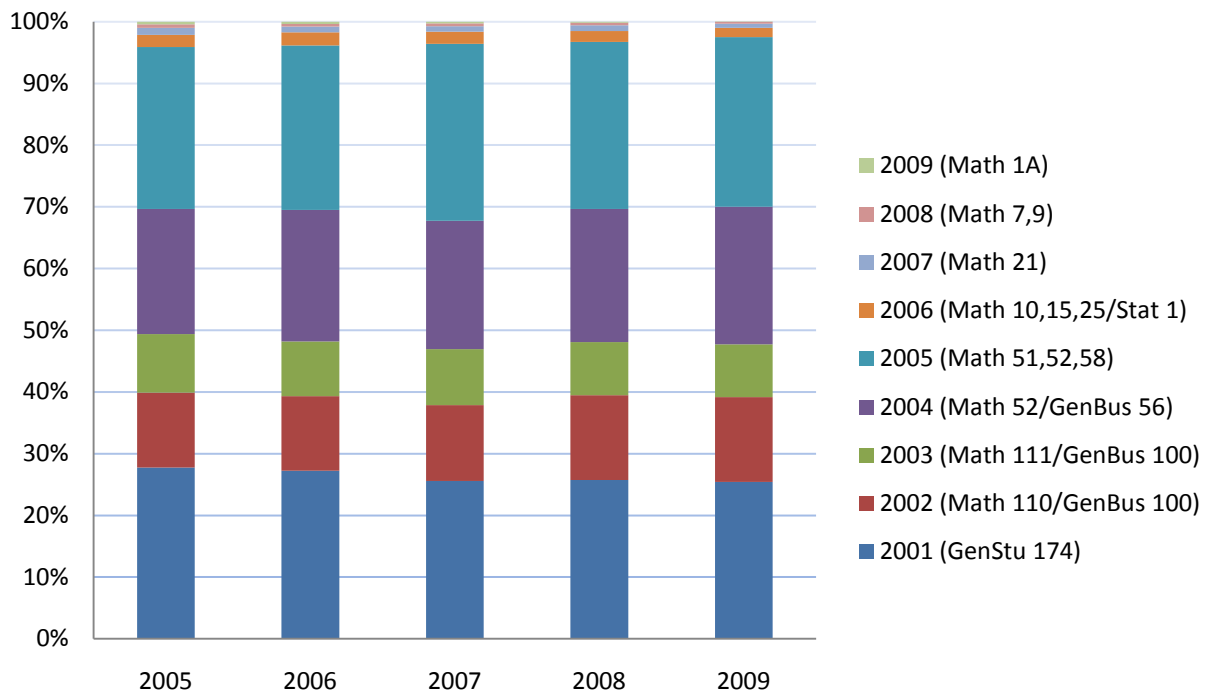
English Placement Level by Year



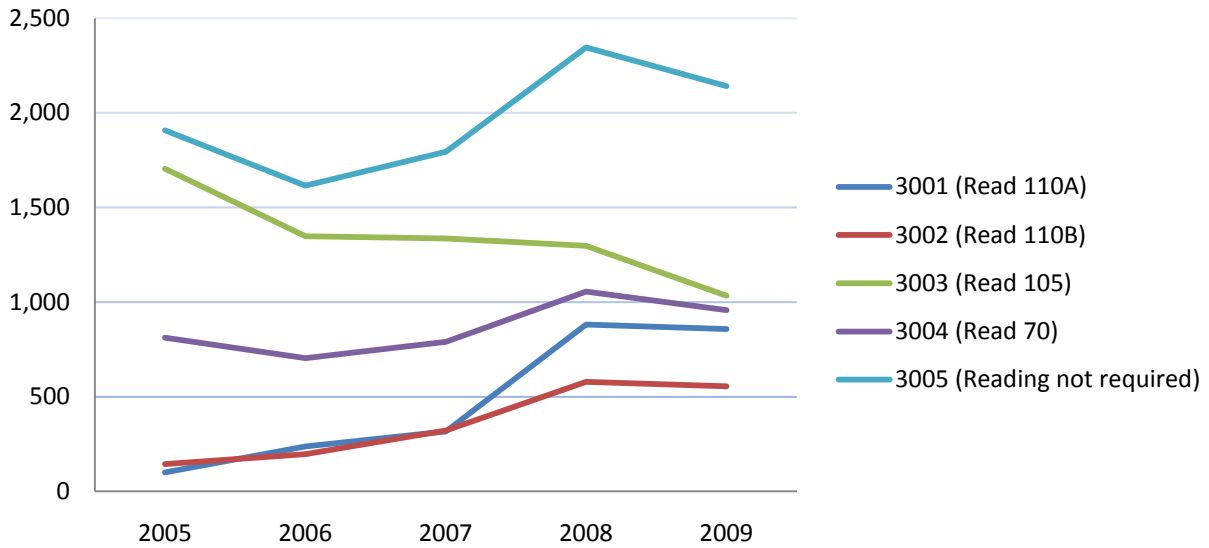
Math Placement Level by Year



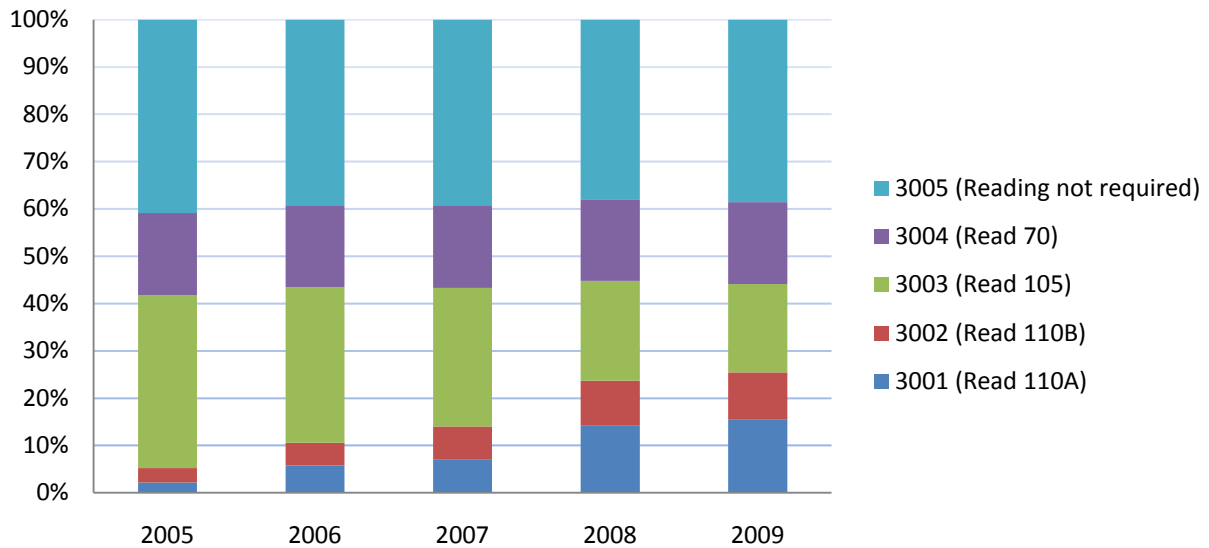
Math Placement Level by Year



Reading Placement Level by Year



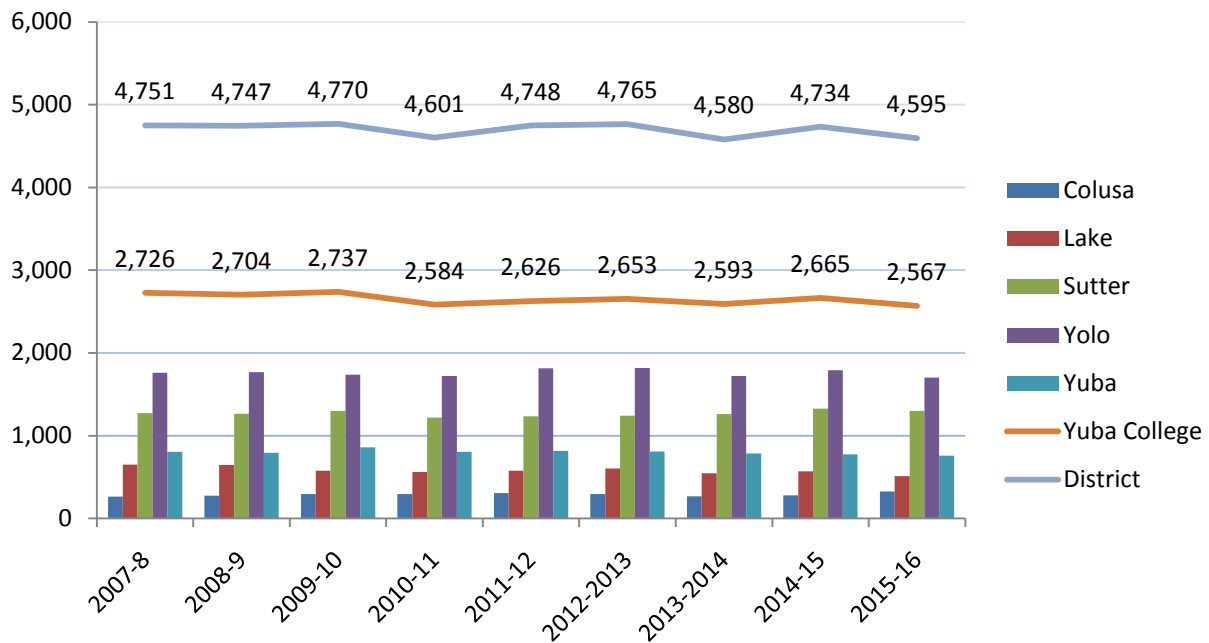
Reading Placement Level by Year



High School Graduation Rates

While Yuba College serves students from across California, students are primarily from our main services counties: Yuba, Sutter, and Lake Counties. While the effect of the recent economic downturn has had an effect on the number of graduates in the Yuba College service area, the number of students graduating high school is expected to stay about the same.

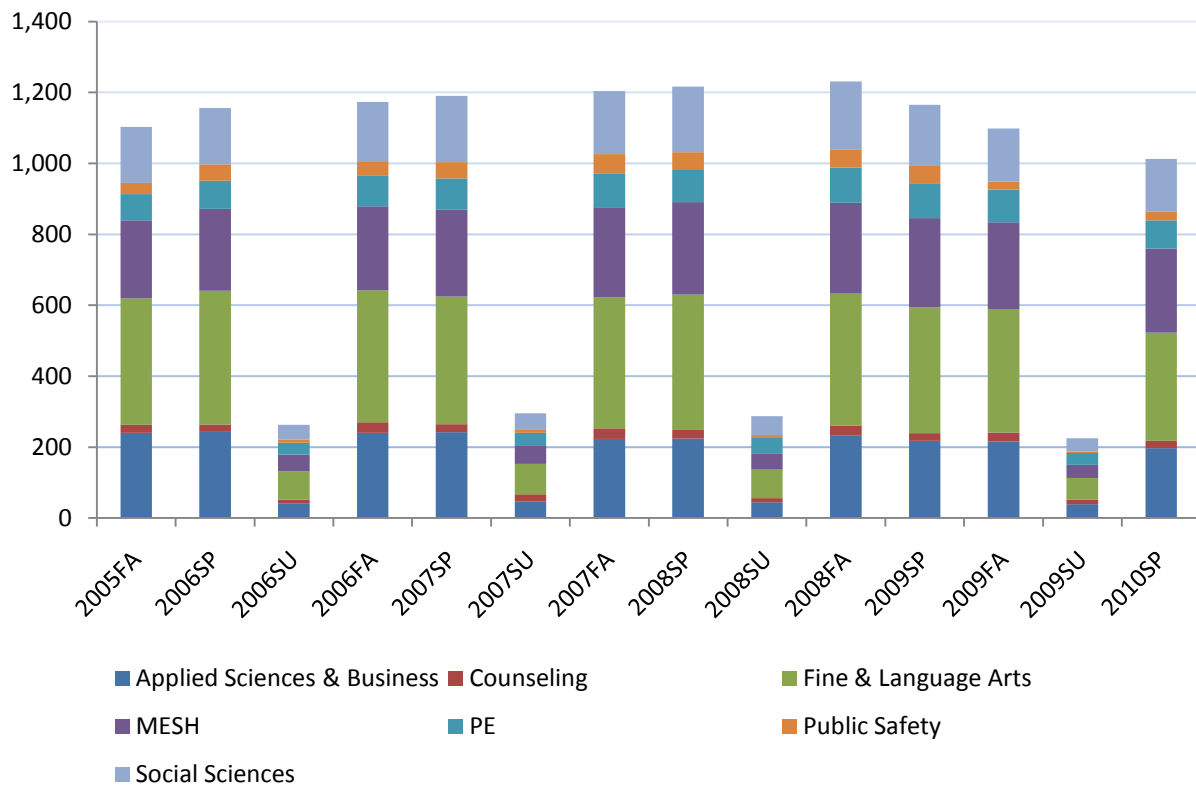
Projected YCCD High School Graduates



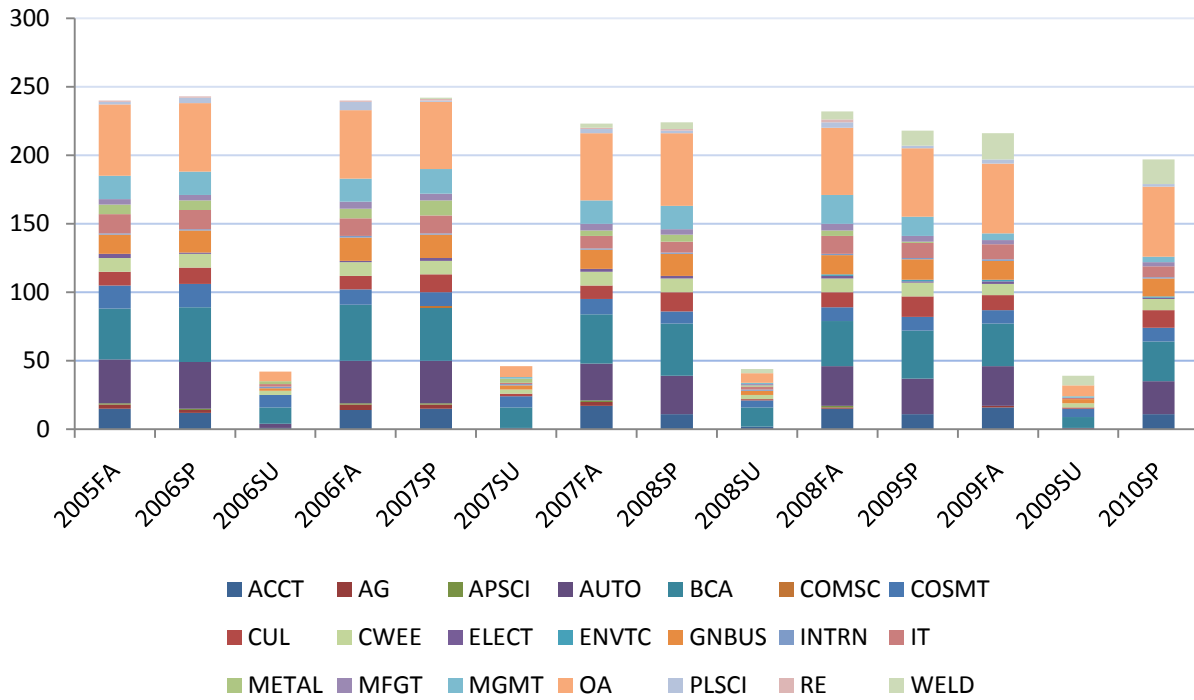
Course Offerings and Enrollments

As a state funded community college, Yuba College largely sets the number of courses it offers by the amount of funding it receives from the state. However, within those financial bounds, Yuba College offers a wide variety of classes and programs, in over 60 academic subjects. The college is currently organized into 9 academic divisions managed by 5 academic or student services deans.

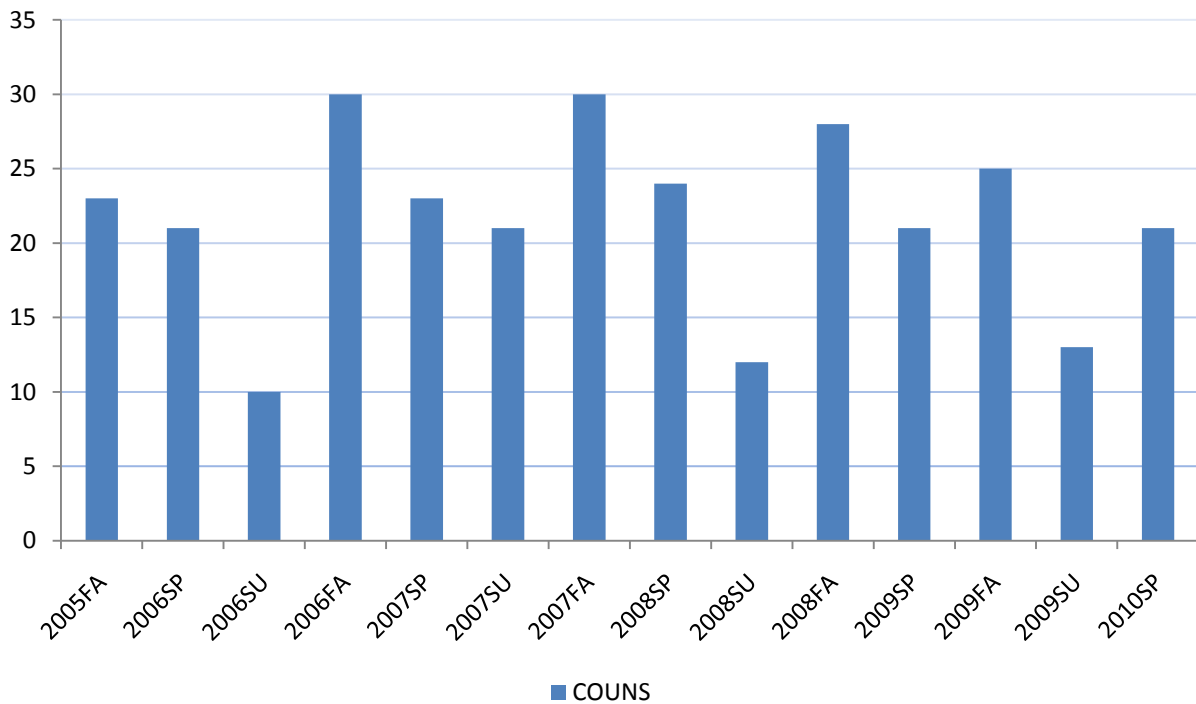
Yuba College: Sections by Division by Year



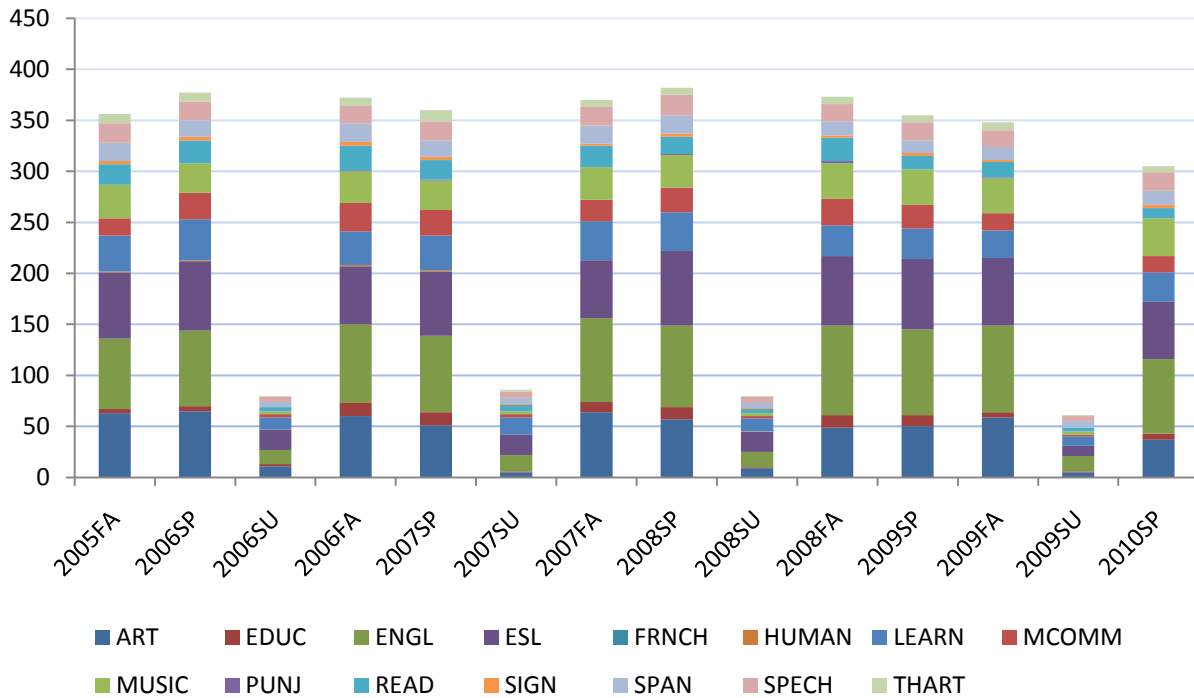
Business and Applied Science



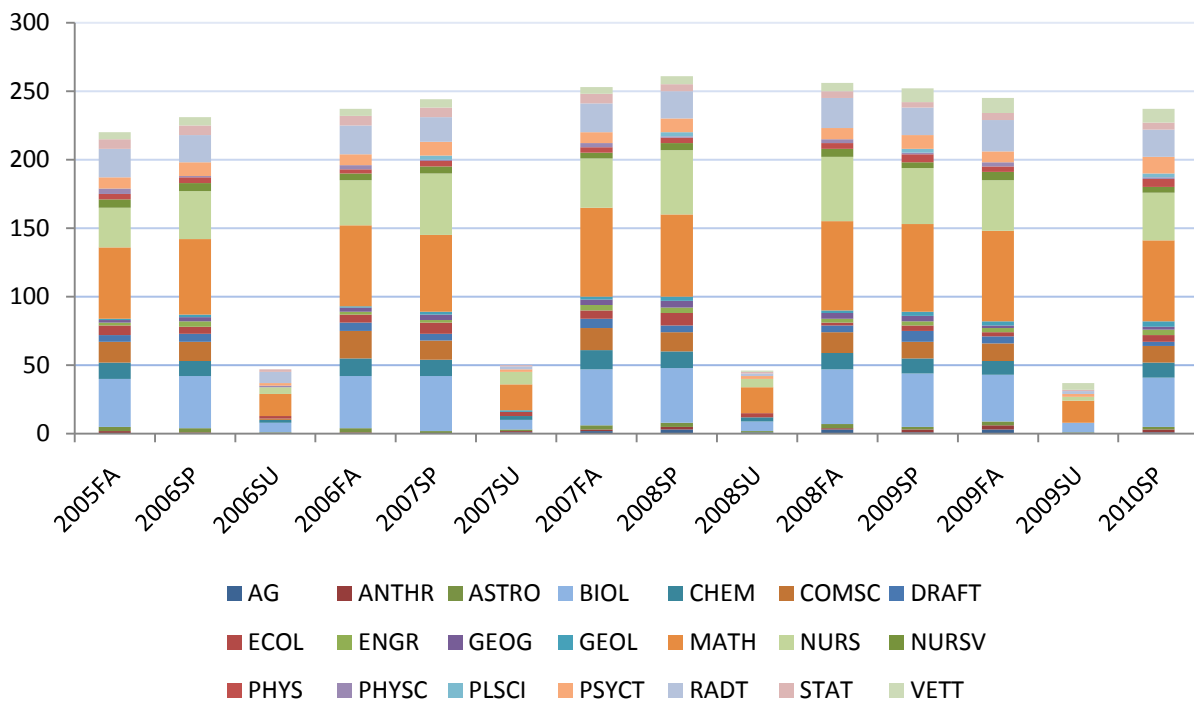
Counseling



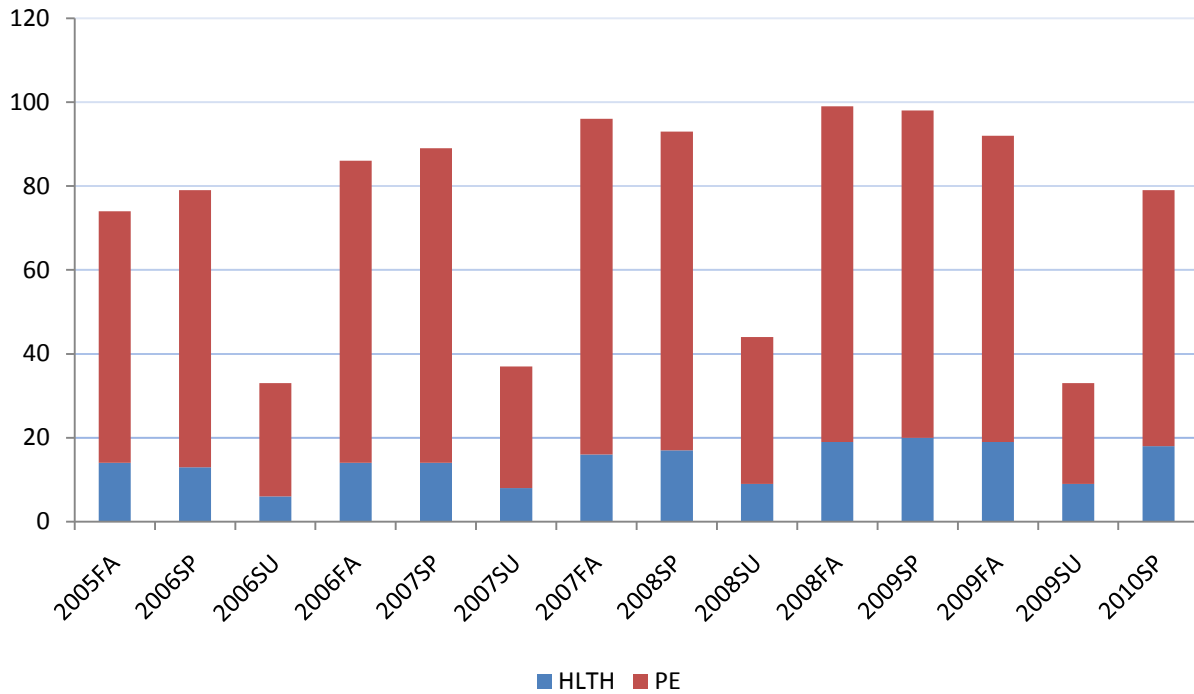
Fine and Language Arts



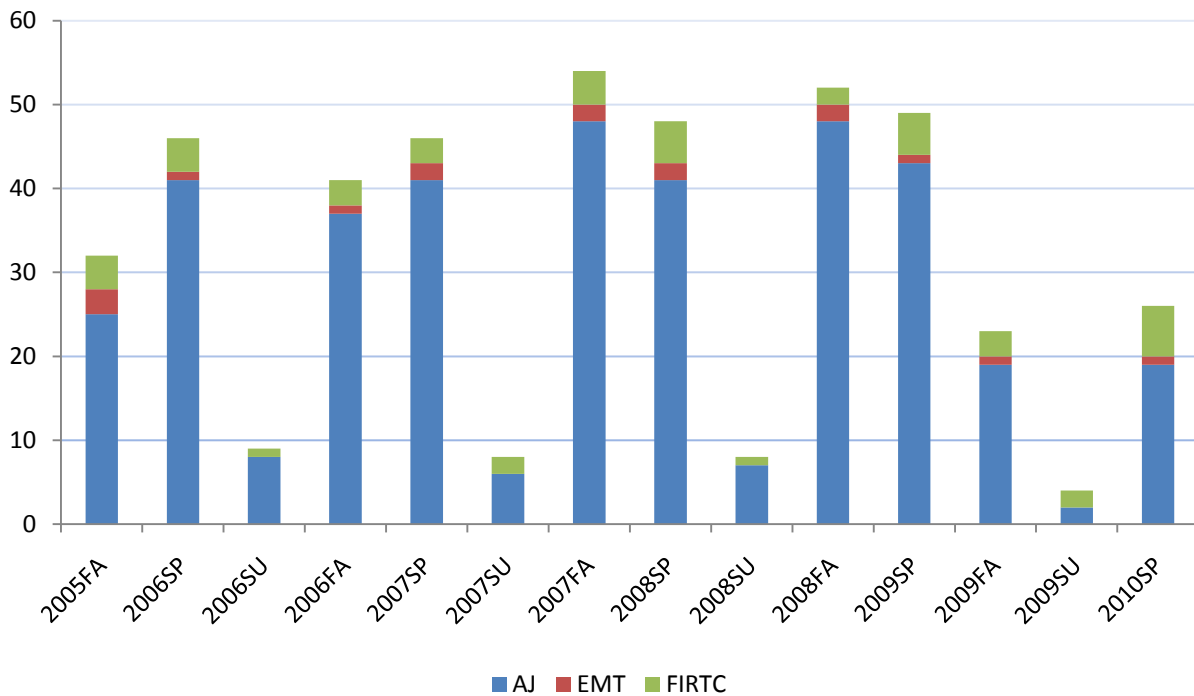
Math, Engineering, Science & Health



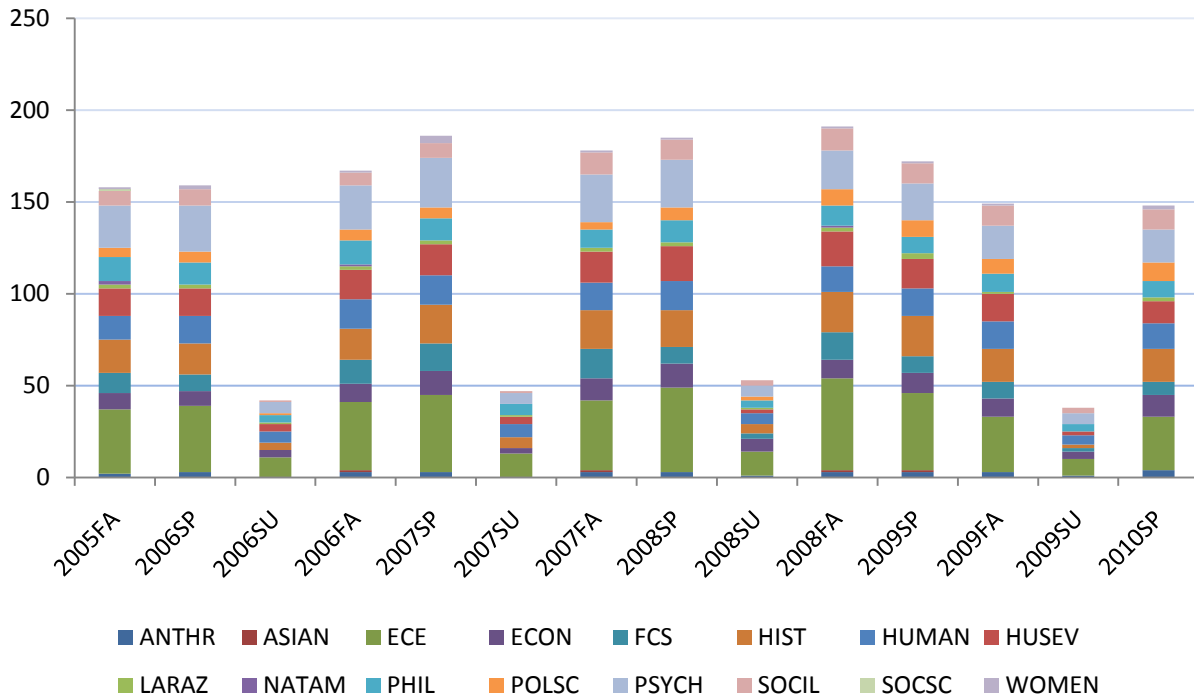
Physical Education & Health



Public Safety



Social Science



Resources

American Community Survey, US Census Bureau, <http://www.census.gov/acs/www/index.html>

American Fact Finder, US Census Bureau, <http://factfinder.census.gov/>

Annual High School Report SY 2009-2010, Dean of Student Development and the Testing and Assessment Office, Yuba College

California Labor Market Information, California Employment Development Department, <http://www.edd.ca.gov/>

Population Estimates, US Census Bureau, <http://www.census.gov/popest/estimates.html>

Yuba College Information System, Datatel Colleague

Yuba Community College District Fact Book 2007-2008, Office of Institutional Effectiveness, Yuba Community College District