

The image features a graphic design with a series of overlapping, 3D-style geometric shapes in shades of yellow, dark blue, and grey, receding into the distance. In the foreground, the Yuba College logo is prominently displayed. The logo consists of a dark blue triangle with a white border, containing the text "Yuba College" in a white serif font. Below the logo, the text "EMP Appendix 2017-2020" is written in a bold, black, sans-serif font, slanted upwards to the right.

**Yuba
College**

**EMP Appendix
2017-2020**

Table of Contents

APPENDIX MATERIALS	3
APPENDIX A: GLOSSARY OF TERMS.....	3
APPENDIX B: YUBA COLLEGE NEIGHBORS	7
APPENDIX C: HIGH SCHOOL FEEDERS.....	8
APPENDIX D: HIGH SCHOOL YIELD HISTORY	10
APPENDIX E: AWARD HISTORY 2011-12 TO 2015-16.....	11
APPENDIX F: CTE PATHWAYS	16
APPENDIX G: PROGRAMS ARTICULATED WITH ROP AND SECONDARY INSTITUTIONS.....	17
APPENDIX H: NORTH FAR NORTH REGIONAL PROJECTS AND YUBA COLLEGE.....	18
APPENDIX I: JOBS- OCCUPATIONAL PROJECTIONS 2014-2024.....	19
APPENDIX J: INDUSTRY CLUSTER EMPLOYMENT PROJECTIONS 2012-2022.....	27
APPENDIX K: MIDDLE-SKILLS JOBS: OCCUPATIONAL PROJECTIONS 2015-2018.....	28
APPENDIX L: GREATER SACRAMENTO LABOR MARKET MIDDLE-SKILLS OCCUPATIONAL FAMILIES PROJECTIONS	47
APPENDIX M: ASSOCIATE DEGREES FOR TRANSFER COMPARISONS.....	48
APPENDIX N: OCCUPATIONAL PROJECTIONS FOR SELECTED PROGRAMS TO EXPAND.....	49
APPENDIX O: NEIGHBORING PROGRAMS FOR OCCUPATIONS WITH GAPS	50
APPENDIX P: DISTRICT INTEGRATED PLANNING DIAGRAM	52
APPENDIX Q: CALIFORNIA GUIDED PATHWAYS INITIATIVE PROJECT KPI ANALYSIS.....	53
APPENDIX R: COLLEGE GOALS, ACTIONS, AND PERFORMANCE OUTCOMES	56
APPENDIX Y: WSCH PROJECTION DETAILS	59
APPENDIX Z: SPACE PROJECTION DETAILS (<i>EXCLUDES</i> COMMUNITY AND DISTANCE EDUCATION LOCATED OFFERINGS)	66

Appendix Materials

Appendix A: Glossary of Terms

The following glossary is provided as a reference to certain words, terms or phrases that appear throughout the Plan. The glossary is not all-inclusive but labels those terms or phrases that appear most frequently.

A to G Course Requirements- A set of high school courses designated by the University of California and California State University to ensure that students have attained a body of general knowledge that will provide breadth and perspective to new, more advanced study in college. Completion of and grades in these courses are used to determine eligibility to attend the two public university systems.

American Association of Community Colleges (AACC)- The leading national organization advocating for approximately 1,200 community colleges and 13 million students who attend them.

American Community Survey (ACS)- An ongoing survey by the US Census Bureau to gather information previously contained only in the long form of the decennial census. It is the largest household survey that the Census Bureau administers. The survey forms are sent to approximately 295,000 addresses monthly or 3.5 million per year.

Career Development and College Preparation (CDCP)- Noncredit instructional certificate programs approved by the Chancellor's Office to prepare students for employment or to be successful in college-level credit curriculum. Each certificate must consist of two or more courses and the curriculum is limited to the categories of English as a Second Language, Elementary and Secondary Basic Skills, Short-term Vocation, and Workforce Preparation.

Census Designated Place (CDP)- A US Census Bureau term for statistical counterparts of incorporated places and are used to provide data for settled concentrations of population that are identifiable by name but are not legally incorporated under the laws of the state in which they are located. It is used for statistical purposes only in connection with the decennial census.

College: Shall mean Yuba College (YC)

College and Career Access pathways (CCAP)- Established by AB 288 in 2015 community colleges may create partnership agreements with K-12 districts to facilitate dual enrollment of high school students. The target audience are public school students who may not already be college bound but are interested in a career technical education program of study or preparation for transfer.

Community College League of California (CCLC)- A nonprofit public benefit corporation composed of the voluntary membership from 72 California community college districts. The League helps locally elected trustees and college CEOs by advocating on their behalf in Sacramento and Washington, D.C., providing continuing education services, and utilizing economies of scale to keep costs low.

District: Shall mean, unless otherwise referred to in a generic sense, the Yuba Community College District (YCCD).

Effective Service Area (ESA)- The geographic area from which, on a five-year fall term average, at least 70% of the students attending a college indicate they are living. The ESA may or may not be limited to the official district service area as designated by the Chancellor's Office.

Employment Development Department (EDD)- California state agency charged to enhance the economic growth and prosperity of the state and communities by collaboratively delivering valuable and innovative services to meet evolving needs of employers, workers, and job seekers. Representative services include unemployment insurance (UI), state disability insurance (SDI), workforce investment and labor market information programs, collection of payroll taxes, and maintenance of employment records for more than 18 million California workers.

Ethnicity or Ethnic Group- A group of people who identify with each other based on similarities such as language, society, culture, or ancestry.

Extended Day Courses: Course offerings that are scheduled to begin at or later than 4:30 pm (aka evening course offerings).

FTES: Shall mean "full-time equivalent students." The units of resident FTES are the primary basis of revenue to the College. A single unit of FTES represents 525 instructional contact hours. Annually, the State sets a level of funding for each College, expressed in units of FTES, that constitutes the vast majority of income to the institution.

High School Yield Rate- The yield is calculated from the count of high school graduates (denominator) divided into the count of students from that high school who enroll at the College the following fall (numerator).

Measures of America- A project of the Social Science Research Council to provide an easy-to-use, methodologically sound tool kit to understand the distribution of wellbeing and opportunity in America. The project seeks to stimulate fact-based dialogue about health, education, and living standards issues.

Median Household Income- The household annual income that is at the mid-point in the distribution of incomes from the highest to lowest income level.

Metropolitan Statistical Area (MSA)- A US Office of Management Budget term for a geographical region with relatively high population density at its core and close social and economic ties throughout the area. The area is commonly composed of one or more adjacent counties that have at least one urban core area of at least 50,000 population.

Middle Skills Occupations- Occupations that commonly require some college coursework, a postsecondary credential and/or an associate degree for entry. Occupations for which an apprenticeship is expected are included in middle skills careers. Some occupations that require only a high school diploma but also expected on-the-job training greater than 12 months are included in the definition of middle skill jobs. In some limited cases occupations that require a

Bachelor's degree for entry but 33 percent or more of the workers in the occupation have completed only some college or an associate degree have been included in the group.

North Central Adult Education Consortium (NCAEC)- A state-block grant funded collaboration among entities that provide adult education opportunities with the Yuba Community College District service area. Collectively the members seek to rethink and redesign a realistic, reasonable, and accountable regional system for adult education.

Open Educational Resources (OER)- Freely accessible, openly licensed text, media, and other digital assets that are useful for teaching, learning, and assessing as well as for research purposes.

Opportunity Index- A report and interactive tool developed by the Measures of America project. The Index paints a portrait of **wellbeing and access to opportunity** in America's communities. The Opportunity Index national report stretches back to 2008-09 and has been a biennial report on human wellbeing in the United States. An annual report, which aggregates data at the county and state level, offers an overall opportunity score and three additional scores on the economy, education, and community health and civic life.

Plan: Shall mean, unless otherwise referred to in a generic or titled reference, the 2017 Educational Master Plan.

Public Policy Institute of California (PPIC)- A nonprofit, nonpartisan think tank dedicated to informing and improving public policy in California through independent, objective, research.

Race- Human grouping based on shared physical traits, ancestry, or genetics.

Social Science Research Council (SSRC)- An independent, international, nonprofit organization that fosters innovative social science research to inform public issues.

Science, Technology, Engineering, and Math (STEM)- A term that refers to the academic disciplines of science, technology, engineering, and calculus and beyond mathematics. It is typically used when discussing education policy and curriculum choices in schools to improve competence and preparation in those disciplines. Although not explicitly defined by the national Science Foundation (NSF) the term was promoted by that agency.

Standard Occupational Classification (SOC)- A system used by federal statistical agencies to classify workers into occupational categories for the purpose of collecting, calculating, or disseminating data. Currently all workers are classified into one or 840 detailed occupations according to the occupational definition. Detailed occupations in any given SOC have similar job duties, and in some cases skills, education, and/or training, are grouped together. The occupations are combined to form 461 broad occupations, 97 minor groups, and 23 major groups.

Strengths, Weaknesses, Opportunities, and Threats (SWOT) Analysis- A study undertaken by an organization to identify its internal strengths and weaknesses as well as its external opportunities and threats.

Taxonomy of Programs (TOP)- A system of numerical codes used by the California community colleges to collect and report information on instructional programs and courses that have similar outcomes. First published in 1979 it now provides a means to translate statistics into the federal Classification of instructional Programs (CIP) framework used in reporting to the National Center for Educational Statistics. The TOP framework now spans 24 core categories of curriculum.

Transfer Model Curriculum- In California higher education a set of related courses identified by faculty-led, statewide efforts to articulate course content that would be appropriate preparatory instruction for transfer to the California State University. Authorized by SB 1440 in 2010, the Academic Senates for the California Community Colleges and California State University have developed a course identification process to vet the curriculum proposed for each model curriculum in the most common transfer majors and a limited number of interdisciplinary fields of study. The development of common course content descriptors ensures that courses offered at one institution are comparable to those elsewhere, provided they have the same C-ID number. Once approved the model curriculum is used to develop associate degree programs for transfer.

WSCH: Shall mean “weekly student contact hours.” For most classes it is the product of the census enrollment of students times the class hours of instruction per week. It includes all credit and non-credit instruction. WSCH represents the average number of hours of student instruction in a week per class, i.e., 30 students enrolled in a class that meets 3 hours per week is 90 WSCH.

WSCH per FTEF: Shall mean weekly student contact hours divided by the full-time equivalent faculty workload assigned to generate those weekly student contact hours. Sometimes referred to as the load ratio. It is a measure of efficiency of the student to faculty contacts. A higher result (ratio) indicates more students served by fewer faculty hours; a lower result indicates fewer students served.

Appendix B: Yuba College Neighbors

College/District	Location	Time*	Miles*
Yuba College	Marysville		
	Butte-Glenn CCD Oroville	40 min	31
	Mendocino-Lake CCD Ukiah	2hr 37 min	122
	Mendocino-Lake CCD Lakeport	2hr 8 min	102
	Sierra Joint CCD Rocklin	45 min	38.1
	Sierra Joint CCD Roseville	43 min	38
	Sierra Joint CCD Grass Valley	36 min	29
	Santa Rosa Junior College Santa Rosa	2hr 15 min	136
	Los Rios CCD Sacramento	54 min	50
	Napa Valley CCD Napa	1hr 57 min	115
	Napa Valley CCD St. Helena	1 hr 57 min	115
	Solano CCD Fairfield	1hr 19 min	84
	Solano CCD Vacaville	1 hr 2 min	67
Yuba College/ Beale AFB Center	Beale AFB		
	Butte-Glenn CCD Oroville	55 min	42
	Mendocino-Lake CCD Ukiah	2 hr 55 min	135
	Mendocino-Lake CCD Lakeport	2 hr 31 min	116
	Sierra Joint CCD Rocklin	47min	35
	Sierra Joint CCD Roseville	43 min	34
	Sierra Joint CCD Grass Valley	40 min	29
	Santa Rosa Junior College Santa Rosa	2 hr 28 min	141
	Los Rios CCD Sacramento	1 hr 5 min	51
	Napa Valley CCD Napa	2 hr 8 min	120
	Napa Valley CCD St. Helena	2 hr 11 min	123
	Solano CCD Fairfield	1 hr 30 min	89
	Solano CCD Vacaville	1 hr 16 min	76
Yuba College/ Sutter County Center	Yuba City		
	Butte-Glenn CCD Oroville	35 min	29
	Mendocino-Lake CCD Ukiah	2 hr 22 min	118
	Mendocino-Lake CCD Lakeport	1 hr 55 min	98
	Sierra Joint CCD Rocklin	52 min	42.3
	Sierra Joint CCD Roseville	53 min	42
	Sierra Joint CCD Grass Valley	53 min	38
	Santa Rosa Junior College Santa Rosa	2 hr 31 min	138
	Los Rios CCD Sacramento	54 min	50.2
	Napa Valley CCD Napa	1 hr 37 min	98
	Napa Valley CCD St. Helena	2 hr 5 min	117
	Solano Fairfield	1 hr 26 min	86
	Solano CCD Vacaville	1 hr 11 min	70

*Google Maps distances and times without traffic

Appendix C: High School Feeders

Feeder High School Cohort Graduation Totals																		
District or High School Name/Area	Ca CC HS Code	2011-12 Grads	Grads with UC/CSU Requirements	%	2012-13 Grads	Grads with UC/CSU Requirements	%	2013-14 Grads	Grads with UC/CSU Requirements	%	2014-15 Grads	Grads with UC/CSU Requirements	%	2015-16 Grads	Grads with UC/CSU Requirements	%	Average % with UC/CSU Requirements, 2011-12 to 15-16	Change in % of Grads with UC/CSU Requirements, 2011-12 to 15-16
Colusa County																		
Colusa Unified																		
Colusa High	063125	78	13	17%	71	24	34%	62	6	10%	69	30	43%	72	25	35%	28%	18%
<i>Colusa County</i>		296	67	23%	283	76	27%	255	43	17%	294	82	28%	332	94	28%		
Lake County																		
Konocti Unified																		
Lower Lake High	173500	114	34	30%	140	48	34%	103	21	20%	112	31	28%	77	24	31%	29%	1%
<i>Lake County</i>		646	158	24%	622	157	25%	564	142	25%	596	165	28%	557	158	28%		
Sutter County																		
Live Oak Unified																		
Live Oak High	513525	101	58	57%	114	57	50%	112	43	38%	90	47	52%	104	43	41%	48%	-16%
East Nicolaus Joint Unified High School District																		
East Nicolaus High School	513275	70	14	20%	73	20	27%	74	28	38%	77	32	42%	63	30	48%	35%	28%
Sutter Union High School District																		
Sutter High	513750	152	35	23%	157	74	47%	157	55	35%	158	56	35%	132	72	55%	39%	32%
Butte View High	513004	8	0	0%	9	0	0%	14	0	0%	21	0	0%	13	0	0%	0%	0%
<i>District</i>		160	35		166	74		171	55		179	56		145	72	50%		
<i>Sutter County</i>		1,342	395	29%	1,396	412	30%	1,395	416	30%	1,409	481	34%	1,396	514	37%		
Yolo County																		
Woodland Joint Unified																		
Woodland High School	573880	308	112	36%	269	125	46%	284	137	48%	250	135	54%	280	119	43%	46%	6%
Cache Creek High Continuation	573881	57	0	0%	67	0	0%	54	0	0%	60	0	0%	57	0	0%	0%	0%
Pioneer High	010116	305	133	44%	324	150	46%	338	160	47%	307	133	43%	300	126	42%	45%	-2%
<i>District</i>		670	245		660	275		676	297		617	268		637	245	38%		
<i>Yolo County</i>		2,050	937	46%	2,132	1,033	48%	2,045	1,053	51%	2,058	1,118	54%	2,040	1,039	51%		

Feeder High School Cohort Graduation Totals

District or High School Name/Area	Ca CC HS Code	2011-12 Grads	Grads with UC/CSU Requirements	%	2012-13 Grads	Grads with UC/CSU Requirements	%	2013-14 Grads	Grads with UC/CSU Requirements	%	2014-15 Grads	Grads with UC/CSU Requirements	%	2015-16 Grads	Grads with UC/CSU Requirements	%	Average % with UC/CSU Requirements, 2011-12 to 15-16	Change in % of Grads with UC/CSU Requirements, 2011-12 to 15-16
Yuba County																		
Yuba City Unified																		
Albert Powell Continuation	513001	51	2	4%	82	0	0%	60	0	0%	34	0	0%	65	0	0%	1%	-4%
River Valley High	010772	364	143	39%	378	147	39%	324	150	46%	355	169	48%	382	179	47%	44%	8%
Yuba City Charter	513012	14	0	0%	24	0	0%	14	0	0%	16	13	81%	21	21	###	36%	100%
Yuba City High	513900	356	137	38%	304	108	36%	366	129	35%	371	157	42%	345	151	44%	39%	5%
Yuba City Independence Academy	513007	22	0	0%	25	0	0%	32	3	9%	27	1	4%	36	2	6%	4%	6%
<i>District</i>		807	282	35%	813	255	31%	796	282	35%	803	340	42%	849	353	42%	37%	7%
Marysville Joint Unified																		
Lincoln (Abraham) (Alternative)	583005	47	0	0%	97	0	0%	84	1	1%	97	0	0%	0	0		0%	0%
Lindhurst High	583001	262	93	35%	225	83	37%	184	60	33%	206	62	30%	131	34	26%	32%	-10%
Marysville High	583520	171	58	34%	170	43	25%	163	51	31%	183	53	29%	62	12	19%	28%	-15%
Marysville Charter Academy for the Arts	583013	39	19	49%	44	22	50%	44	26	59%	41	30	73%	42	20	48%	56%	
North Marysville Continuation	583008	46	0	0%	58	0	0%	43	0	0%	49	0	0%	0	0		0%	0%
South Lindhurst Continuation	583009	33	0	0%	17	0	0%	44	0	0%	44	0	0%	22	0	0%	0%	0%
<i>District</i>		598	170	28%	625	148	24%	562	138	25%	620	145	23%	644	152	24%	25%	-5%
Wheatland Union High School District																		
Wheatland Union High	583830	157	53	34%	145	62	43%	164	88	54%	147	43	29%	158	76	48%	42%	14%
Camptonville Elementary																		
Camptonville Academy	611593	28	0	0%	27	0	0%	39	4	10%	35	8	23%	42	7	17%	10%	17%
<i>Yuba County</i>		1,342	395	29%	1,396	412	30%	1,395	416	30%	1,409	481	34%	1,396	514	37%	32%	7%
<i>State</i>		418,598	160,494	38%	422,177	166,521	39%	421,636	176,688	42%	426,950	185,179	43%	429,323	194,698	45%	42%	7%

Source: California Department of Education. *Data Quest*. Retrieved June 14, 2017 from <http://www.cde.ca.gov/ds/sd/cb/dataquest.asp>; analysis by Cambridge West Partnership, LLC

Appendix D: High School Yield History

County	2012			2013			2014			2015			2016			Average Yield %, 2012 - 2016	Change in Yield %, 2012 - 2016
	Total Grads	Grads to Yuba	Yield %	Total Grads	Grads to Yuba	Yield %	Total Grads	Grads to Yuba	Yield %	Total Grads	Grads to Yuba	Yield %	Total Grads	Grads to Yuba	Yield %		
Sutter																	
Albert Powell Continuation	51	0	0%	82	0	0%	60	0	0%	34	0	0%	65	0	0%	0%	0%
River Valley High	364	98	27%	378	100	26%	324	132	41%	355	130	37%	382	151	40%	34%	13%
Yuba City Charter	14	0	0%	24	0	0%	14	0	0%	16	0	0%	21	0	0%	0%	0%
Yuba City High	356	220	62%	304	188	62%	366	258	70%	371	252	68%	345	239	69%	66%	7%
Yuba City Independence Academy	22	0	0%	25	1	4%	32	3	9%	27	5	19%	36	7	19%	10%	19%
Sutter High	152	47	31%	157	52	33%	157	57	36%	158	62	39%	132	45	34%	35%	3%
Butte View High	8	0	0%	9	0	0%	14	4	29%	21		0%	13	2	15%	9%	15%
Live Oak High	101	17	17%	114	23	20%	112	24	21%	90	19	21%	104	19	18%	20%	1%
East Nicolaus High	70	14	20%	73	8	11%	74	17	23%	77	13	17%	63	14	22%	19%	2%
Yuba																	0%
Lincoln (Abraham) (Alternative)	47	6	13%	97	24	25%	84	10	12%	97	9	9%	0	11		15%	-13%
Lindhurst High	262	124	47%	225	124	55%	184	122	66%	206	110	53%	229	141	62%	57%	14%
Marysville High	171	81	47%	170	76	45%	163	82	50%	183	86	47%	199	98	49%	48%	2%
Marysville Charter Academy for the Arts	39	19	49%	44	18	41%	44	22	50%	41	20	49%	42	21	50%	48%	1%
North Marysville Continuation	46	0	0%	58	1	2%	43	12	28%	49	11	22%	0	0		13%	0%
South Lindhurst Continuation	33	4	12%	17	0	0%	44	13	30%	44	14	32%	22	7	32%	21%	20%
Wheatland Union High	157	45	29%	145	38	26%	164	55	34%	147	44	30%	158	49	31%	30%	2%
Lake																	0%
Lower Lake High	114	23	20%	140	27	19%	103	22	21%	112	33	29%	77	18	23%	23%	3%
Yolo																	0%
Woodland Senior High	308	12	4%	269	5	2%	284	4	1%	250	2	1%	280	1	0%	2%	-4%
Cache Creek High (Continuation)	57	0	0%	67	0	0%	54	0	0%	60	1	2%	57	0	0%	0%	0%
Pioneer High	305	0	0%	324	0	0%	338	0	0%	307	0	0%	300	0	0%	0%	0%
	2677	710	27%	2722	685	25%	2658	837	31%	2645	811	31%	2525	823	33%	29%	6%

Sources: California Department of Education. *Data Quest*. and Chancellor's Office MIS Referential Files; analysis by Cambridge West Partnership, LLC

Appendix E: Award History 2011-12 to 2015-16

Control_ Nbr	Program Title	Yr Approved	Award Type	TOP	Awards Academic Year Granted					
					2011-12	2012-13	2013-14	2014-15	2015-16	Total
07001	Agriculture	1970	Assoc of Science	010100	1		1	1	2	5
07002	Veterinary Technology	2011	Assoc of Science	010210	12	12	12	11	13	60
99999	Veterinary Technician	Inactive	Certificate of Completion	010210				3	9	12
07005	Agricultural Business	1970	Cert of Achieve 18 to <30	011200						
31743	Biology	2013	Assoc of Science	040100		3	9	7	10	29
35801	Biology	2017	Assoc of Science-T	040100						
07007	Accounting	1970	Assoc of Science	050200	15	19	14	20	17	85
16183	Accounting	2009	Cert of Achieve 12 to <18	050200	11	21	5	11	18	66
20223	Accounting	1970	Cert of Achieve 6 to <18	050200	12	9	6	8	6	41
07165	Income Tax Preparation	1970	Assoc of Science	050210	9	8	4	4	4	29
20221	Income Tax Preparation	1970	Cert of Achieve 18 to <30	050210	12	6		2	1	21
12788	Business Administration	2002	Assoc of Science	050500	22	31	30	33	28	144
32780	Business Administration	2014	Assoc of Science-T	050500				3	22	25
07141	Personnel Management	1970	Assoc of Science	050600	1		1	4	2	8
07162	General Business Management	1970	Assoc of Science	050600	8	5	4	7	21	45
13307	General Business Management	Inactive	Cert of Achieve 12 to <18	050600				1	4	5
20218	Personnel Management	Inactive	Cert of Achieve 6 to <18	050600	1			2	1	4
20219	General Business Management	1970	Cert of Achieve 6 to <18	050600	1			2	3	6
07163	Small Business Management	1970	Cert of Achieve 18 to <30	050640				3	2	5
13308	Small Business Management	2009	Cert of Achieve 12 to <18	050640			1	7	3	11
16751	Small Business Management	2005	Assoc of Science	050640	1	2	1	5	7	16
12321	Retail Management (WAFC)	2001	Cert of Achieve 18 to <30	050650						
07012	Administrative Assistant	1970	Assoc of Science	051400	7	2	4	9	3	25
07142	Business Computer Applications	1970	Assoc of Science	051400	5	2	8	9	9	33
07143	Clerical	Inactive	Cert of Achieve 18 to <30	051400	6	5	5	5	3	24
07167	Word Processing	1970	Assoc of Science	051400	2	3		4	2	11
19522	Veterinary Receptionist/Assistant	2009	Cert of Achieve 12 to <18	051400			13	6	8	27
20213	Word Processing	Inactive	Cert of Achieve 18 to <30	051400	6	5	3	5	1	20

Control_ Nbr	Program Title	Yr Approved	Award Type	TOP	Awards Academic Year Granted					
					2011-12	2012-13	2013-14	2014-15	2015-16	Total
20214	Business Computer Applications	1970	Cert of Achieve 12 to <18	051400				1	1	2
20214	Business Computer Applications	1970	Cert of Achieve 18 to <30	051400	4	4		2		10
20216	Administrative Assistant	1970	Cert of Achieve 18 to <30	051400	11	5	4	7	5	32
07166	Legal Office Skills	1977	Assoc of Science	051410	4	2		2	1	9
20212	Legal Office Skills	Inactive	Cert of Achieve 6 to <18	051410	1	1	1			3
10169	Medical Office Skills	1985	Assoc of Science	051420	2	2	3	1	7	15
20188	Medical Office Procedures	Inactive	Cert of Achieve 18 to <30	051420	2	2		1		5
07144	Mass Communications	1989	Assoc of Arts	060400		2	2	4		8
07144	Mass Communications	1989	Assoc of Science	060400	2	2	2	3		9
11011	Mass Communications	1989	Assoc of Arts	060400						
20211	Mass Communications	1989	Cert of Achieve 18 to <30	060400			1		2	3
16750	Information Technologies	Inactive	Assoc of Science	070200	3	2	2	2		9
07014	Computer Science	1970	Assoc of Science	070710	3	9		3	5	20
20210	Computer Science	1970	Cert of Achieve 18 to <30	070710		2		1	1	4
18980	Network Security	Inactive	Cert of Achieve 12 to <18	070810	2	1	1		1	5
07016	Physical Education	1970	Assoc of Science	083500		1			2	3
07023	Tune-Up & Drivability	1970	Assoc of Science	094800					1	1
10173	Master Mechanic	1970	Assoc of Science	094800	2	2	3	2	1	10
20201	Tune-Up & Drivability	1970	Cert of Achieve 18 to <30	094800	1	2	1	1	1	6
20208	Automotive Drive Trains	1970	Cert of Achieve 18 to <30	094800						
20209	Master Mechanic	1970	Cert of Achieve 6 to <18	094800	5	2	4	2	6	19
99999	Auto	*	Certificate of Training	094800				2	8	10
99999	Auto	*	Certificate of Training	094800				6	15	21
07024	Auto Body Repair	2009	Assoc of Science	094900		1	1			2
19614	Automotive Body Repair	2009	Cert of Achieve 12 to <18	094900	1	1				2
30245	Auto Body Repair	2010	Cert of Achieve 18 to <30	094900	3	2	1			6
07026	Architectural Studies	1970	Assoc of Science	095310		2				2
13309	Architectural Studies	2009	Cert of Achieve 12 to <18	095310						
20199	Architectural Studies	1970	Cert of Achieve 18 to <30	095310						
07146	Manufacturing Technology / Machining	1970	Assoc of Science	095600	2					2
07147	Manufacturing Technology / Machining	1970	Cert of Achieve 18 to <30	095600						

Control_ Nbr	Program Title	Yr Approved	Award Type	TOP	Awards Academic Year Granted					
					2011-12	2012-13	2013-14	2014-15	2015-16	Total
07027	Welding	1970	Assoc of Science	095650	1		1	2	2	6
16185	Welding Technologies	2009	Cert of Achieve 12 to <18	095650	3	17	4	7	8	39
20196	Welding	1970	Cert of Achieve 18 to <30	095650	5	1	1		1	8
07028	Art	1970	Assoc of Arts	100200	1	3	4	6	2	16
33620	Studio Arts	2015	Assoc of Arts-T	100200						
07029	Music	1970	Assoc of Arts	100400	2	4	8	4	7	25
33129	Music	2014	Assoc of Arts-T	100400						
07030	Theatre Arts	1970	Assoc of Arts	100700		1		1	1	3
07031	Photographic Imaging	1970	Assoc of Science	101200				1		1
20191	Photographic Imaging	1970	Cert of Achieve 18 to <30	101200						
07151	Commercial Art	1996	Assoc of Science	101300			1	3	1	5
07038	Radiologic Technology	1970	Assoc of Science	122500	57	25	31	10	7	130
07035	Nursing	1981	Assoc of Science	123010	40	52	52	50	58	252
07036	Vocational Nursing	1970	Assoc of Science	123020	1		1			2
07039	Psychiatric Technician	Inactive	Assoc of Science	123900	1	2	1	2		6
20180	Psychiatric Technician	1981	Cert of Achieve 6 to <18	123900		1				1
32888	Kinesiology	2014	Assoc of Arts-T	127000					1	1
07041	Family & Consumer Science	Inactive	Assoc of Science	130100		1				1
07154	Early Childhood Education	2013	Assoc of Science	130500	22	22	28	22	21	115
10185	Child Development Teacher	2013	Cert of Achieve 18 to <30	130500	7	5	6	4	6	28
10186	Diversity Specialization	2013	Cert of Achieve 18 to <30	130500				3	6	9
32296	Early Childhood Education	2013	Assoc of Science-T	130500				3	3	6
99999	Diversity in ECE	Inactive	Certificate of Completion	130500			1	29	34	64
07155	School Age Children	2013	Cert of Achieve 18 to <30	130550		1				1
10187	Infant and Toddler	2013	Cert of Achieve 18 to <30	130590	5	2	1	4	7	19
07042	Culinary Arts	1972	Assoc of Science	130630	6	5	11	6	4	32
20173	Culinary Arts	1972	Cert of Achieve 18 to <30	130630	13	18	9	12	8	60
07043	English	1970	Assoc of Arts	150100	2	9	4	12	13	40
33108	English	2014	Assoc of Arts-T	150100					3	3
07046	Communication Studies	1970	Assoc of Science	150600	1			1	1	3
32528	Communication Studies	2014	Assoc of Arts-T	150600					2	2

Control_ Nbr	Program Title	Yr Approved	Award Type	TOP	Awards Academic Year Granted					
					2011-12	2012-13	2013-14	2014-15	2015-16	Total
07048	Mathematics	1970	Assoc of Science	170100	10	3	7	4	7	31
30875	Mathematics	2011	Assoc of Science-T	170100				3	2	5
31620	Chemistry	2012	Assoc of Science	190500		1	5	5	4	15
07053	Psychology	1972	Assoc of Arts	200100	24	21	29	25	30	129
32873	Psychology	2014	Assoc of Arts-T	200100					6	6
16752	Human Services	2005	Assoc of Science	210400	12	2	9	11	3	37
10189	Chemical Dependency Counselor	1990	Assoc of Science	210440	7	8	4	6	7	32
19611	Alcohol and Controlled Substances	2009	Cert of Achieve 12 to <18	210440	10	8	3	8	2	31
20167	Chemical Dependency Counselor	1990	Cert of Achieve 6 to <18	210440	18	17	8	9	9	61
07054	Law Enforcement	1970	Assoc of Science	210500	16	17	25	24	24	106
33035	Administration of Justice	2014	Assoc of Science-T	210500					9	9
07055	Corrections	1970	Assoc of Science	210510	2	5	1	2	1	11
16893	Special Investigator Academy	2006	Cert of Achieve 18 to <30	210540						
16894	Basic Police Academy	2006	Cert of Achieve 30 to <60	210550						
19425	Administration of Justice-Basic Police Academy	2009	Assoc of Science	210550		1	3	1	1	6
19613	Reserve Training Module II Academy	2009	Cert of Achieve 12 to <18	210550						
30173	Reserve Training Module I Academy	2010	Cert of Achieve 6 to <18	210550						
07057	Fire Technology	1970	Assoc of Science	213300	2	5	4	1	1	13
13346	Fire Technology Practicum	1997	Cert of Achieve 30 to <60	213300						
19612	Fire Technology Practicum	2009	Cert of Achieve 12 to <18	213300						
20164	Fire Technology	1970	Cert of Achieve 6 to <18	213300				1		1
07159	Fire Fighter I Academy	1996	Cert of Achieve 18 to <30	213350	32					32
31044	Fire Technology - Fire Academy	2011	Assoc of Science	213350			1	2		3
07058	Social Science	1970	Assoc of Arts	220100	1	1	4	4	2	12
17946	Social and Behavioral Sciences	2008	Assoc of Science	220100	72	103	105	150	134	564
07062	History	1970	Assoc of Arts	220500	4	9	4	6	7	30
33029	History	2014	Assoc of Arts-T	220500						
33124	Political Science	2014	Assoc of Arts-T	220700					1	1
30716	Sociology	2011	Assoc of Arts-T	220800				5	3	8
07065	Cosmetology	1972	Assoc of Science	300700	1		3	1	1	6
20161	Cosmetology	1972	Cert of Achieve 6 to <18	300700	48	26	33	21		128

Control_ Nbr	Program Title	Yr Approved	Award Type	TOP	Awards Academic Year Granted					Total
					2011-12	2012-13	2013-14	2014-15	2015-16	
7066	General Education	Inactive	Assoc of Arts	490100	13	4	2			19
7066	General Education	Inactive	Assoc of Science	490100	31	6	8	1		46
11000	Communication	2008	Assoc of Arts	490100						
17948	Communication	Inactive	Assoc of Arts	490100	1				6	7
17949	General Health	Inactive	Assoc of Science	490100	3	3	5	5	4	20
17947	Natural Science	2011	Assoc of Science	490200	54	95	92	126	123	490
10998	Arts & Humanities	2008	Assoc of Arts	490310						
17945	Arts & Humanities	Inactive	Assoc of Arts	490310	41	42	42	62	59	246
				Totals	749	726	708	877	898	3,958
*Possibilities include Automatic Transmission/Transaxle; Brakes; Engine Performance; Electrical Systems; Engine Machining; Engine Repair;										
Heating & Air Conditioning; Manual Drive Train & Axles; Suspension & Steering										

Source: California Community College, Chancellor's Office. *Program Inventory and MIS Referential Files*; analysis by Cambridge West Partnership, LLC

Appendix F: CTE Pathways

STREAM Participating District/School	Industry Sector/Pathway	Yuba College Career Pathway Program
YUBA COUNTY		
Marysville Joint Unified School District		
Lindhurst High	Sports Medicine	
Lindhurst High	Welding & Forming Technologies	Welding and Manufacturing (AS, Cert)
Lindhurst High	Automotive Technology	Automotive Tech (AS, Cert), Auto body Tech (AS, Cert)
Marysville High	Hospital/Community Health Service	Rad Tech (AS), Psych Tech (AS, Cert)
Marysville High	Sports Medicine	
Yuba County Office of Education		
Yuba County Career Preparatory Charter	Automotive Technology	Automotive Tech (AS, Cert), Auto body Tech (AS, Cert)
SUTTER COUNTY		
East Nicolaus Joint Union High School District		
East Nicolaus High	Sports Medicine	
East Nicolaus High	Welding & Forming Technologies	Welding and Manufacturing (AS, Cert)
Sutter Union High School District		
Sutter Union High	Welding & Forming Technologies	Welding and Manufacturing (AS, Cert)
Yuba City Unified School District		
River Valley High	Patient Care	
River Valley High	Sports Medicine	
Yuba City High	Sports Medicine	
Yuba City High	Welding Technology	Welding and Manufacturing (AS, Cert)
Yuba City High	Automotive Technology	Automotive Tech (AS, Cert), Auto body Tech (AS, Cert)

Source: NCSPC *Programs List*. Retrieved July 12, 2017 from <http://www.tricountyrop.com/NCSPC> and Yuba College, Daren Otten, Dean for Applied Academics. *Personal Correspondence*. July 14, 2017

Appendix G: Programs Articulated with ROP and Secondary Institutions

The Yuba College programs listed below have at least one class articulated with secondary institutions.

Accounting

Administration of Justice

Agriculture

- Animal Science
- Environmental Horticulture

Art-Applied Photography

Automotive Technology-Automotive

Business

- Business Computer Applications
- Clerical
- Information Technology
- Medical Office Skills
- Word Processing

Culinary Arts

Early Childhood Education

- Infant and Toddler

Electronics Technology

Fire Technology

Manufacturing Technology/

Metalworking Welding

Mass Communications

Nursing

Veterinary Technology

Source: Yuba College Catalog 2016-17

Appendix H: North Far North Regional Projects and Yuba College

Regional Need Program	Start	End	Yuba Amount	Object of Expense	Lead District
Public Safety Expansion	9/1/16	8/1/18	\$49,028	faculty salary	Sierra
Psychiatric Technology	2/1/17	12/31/17	\$129,247	faculty salary/benefits	Yuba only
Interdisciplinary Entrepreneurship	7/1/17	12/31/18	\$12,500	faculty salary	Sierra
Global Trade	1/1/17	12/31/19	\$0		Los Rios
Business Management, Ag Business, Sales, & Service, Business Admin.					
Advanced Manufacturing Network Initiative	2/1/17	6/30/19	\$260,000	CNC, Machine shop equipment & supplies	Butte
Regional Clinical Placement Developer	2/1/16	2/28/17	\$0		Sac. City
Projects in Common					
CTE Rebranding, Marketing & Outreach					Butte
Soft Skills					Butte
Get Focused/Stay Focused					Butte
Professional Development					Butte
All Sectors					
CTE Website/Social Media					Los Rios
Employer Engagement & Industry Align					Los Rios
Job Placement Services					Los Rios
Nudge, Pilot Project					Sac. City

Source: California Community Colleges, Chancellor’s Office, Economic and Workforce Development Division, Doing What Matters Initiative. *Strong Workforce Program-North Far North Program Investments.*

Appendix I: Jobs- Occupational Projections 2014-2024

Interpreting the Occupational Projection Data

The projections that are estimates based on information the EDD has received through surveys of employers assume that historical trends will continue into the future. Therefore, unforeseen events occurring in the projection period may have an impact on employment levels. The projections should be supplemented, where possible, by documents such as those published by the Centers of Excellence, local and regional economic research materials, chambers of commerce reports, and information from local economic development agencies.

Emerging occupations may not be accurately reflected in the Standard Occupational Classification (SOC) titling, the current estimates of employment, or the future projections. Real-time LMI job posting data may be a good source of information about emerging trends and occupations.

The 2010 SOC system is used by federal and state agencies to classify workers into occupational categories for the purpose of collecting, calculating, or disseminating data. Workers are classified into one of 840 detailed occupations, which is a grouping of job titles that have a similar set of activities or tasks. The SOC classification system is managed by the Bureau of Labor Statistics (BLS) and will be updated next in 2018.

The typical entry-level education is also a coding system managed by the BLS. Local practice in a region may vary.

Wage data is aggregated at the county level, but does vary across counties for the same occupation. There can also be variation across counties on the entry-level education, on-the-job training, and work experience for the same occupation.

Determining a labor market gap using the demand data in conjunction with the supply data assembled by the Centers of Excellence should be done with caution.

Interpreting the Supply Data

The California community college data mart is the source of awards granted in that system. The California-specific Taxonomy of Programs (TOP) coding system is the means by which award data is organized. The counts in the data mart represent awards given, not the number of students who received the award. The federal Integrated Postsecondary Education Data system (IPEDS) reporting system is the source of awards from postsecondary institutions other than the California community colleges comes. There is a one-year lag in the availability of that data. That federal reporting system uses the Classification of Instructional Programs (CIP) coding system. There may be errors in cross walking data from the CIP to TOP codes. The CIP code system is more detailed and nuanced compared to the TOP code system. There are inconsistencies in the classification of awards below the associate degree between the IPEDS and California community college system. IPEDS classifies by the duration of the program while the California public institutions classify by semester units.

It is very important to consider supply data on a regional basis rather than a single institution. That will include neighboring institutions whose graduates are also competing for job openings. Unfortunately, there is no agreement on the learning outcomes from educational programs. It is *stressed* to be aware that among the community colleges there can be differences in the TOP code each college selects for the same program of study.

Often, colleges look at graduation numbers to determine the supply of potential workers. However, this might underestimate or overestimate the number of qualified individuals. For example, community college students need to petition to receive an award once they meet the requirements, and some do not complete this final step. Students may not get a job in their field of study, or they may move out of the region to find work. In addition, skills-builder students who pass community college career and technical education courses frequently go on to secure significant wage gains, even if they do not complete a program. Completion numbers also do not account for differences in educational preferences or unique skills that program graduates possess (for example, being bilingual).

In addition to graduates of educational programs, there are other considerations on the supply side, such as existing underemployed/unemployed workers with the needed skills or work experience in the labor pool or graduates from outside the region able to take jobs are two other considerations.

In the following tables individual occupation that are projected to have 50 or more average annual job openings have been selected. The SOC code for the occupation has been matched to the TOP code for instructional programs offered by California community colleges. Each occupation may be associated with more than one TOP code. In those cases the subtotal row reflects the total number of graduates. The number of projected average annual openings is compared to the three-year average number of graduates from California community colleges and private postsecondary institutions in the Sacramento and Yuba City Metropolitan Statistical Areas.

Greater Sacramento and Yuba City Metropolitan Statistical Areas 2014-2024 Occupational Projections and Three-Year Average Awards																		
SOC	Occupational Title	Estimated Employment 2014	Projected Employment 2024	Numeric Change 2014-2024	An Av Total Jobs	Q1 2016 Hourly Wage	Q1 2016 Median Annual	Entry Level Education	Work Experience	On-the-Job Training	TOP	Yuba Cert.	Yuba Degrees	3Yr Av of Awards	Multiple TOP Awards	Occ Ct.		
291141	Registered Nurses	18,210	22,090	3,880	817	\$47.98	\$99,790.50	Bachelor's	None	None	123000			9		1		
291141	Registered Nurses										123010		1	272	281			
111021	General and Operations Managers	15,450	18,380	2,930	685	\$44.94	\$93,462.50	Bachelor's	≥5 years	None	050100			127		1		
111021	General and Operations Managers										050500		2	468				
111021	General and Operations Managers										050600	1	2	73				
111021	General and Operations Managers										050640	2	1	48				
111021	General and Operations Managers										050650	1		2				
111021	General and Operations Managers										050800			1	719			
132011	Accountants and Auditors	12,550	14,370	1,820	517	\$30.88	\$64,215.50	Bachelor's	None	None	050200	2	1	293		1		
132011	Accountants and Auditors										050210	1	1	12	305			
131111	Management Analysts	17,610	19,950	2,340	478	\$32.60	\$67,802.00	Bachelor's	<5 years	None	050100			127		1		
131111	Management Analysts										050500		2	468				
131111	Management Analysts										050600	1	2	73	668			
151121	Computer Systems Analysts	8,710	11,310	2,600	371	\$39.94	\$83,076.50	Bachelor's	None	None	070100			65		1		
151121	Computer Systems Analysts										070200			21				
151121	Computer Systems Analysts										070810			136	222			
252021	Elementary School Teachers, Except Special Education	8,770	9,710	940	288		\$70,954.00	Bachelor's	None	I/R						1		
172051	Civil Engineers	5,850	6,550	700	244	\$50.36	\$104,736.50	Bachelor's	None	None						1		
252031	Secondary School Teachers, Except Special and Career/Technical	6,360	7,050	690	219		\$73,683.00	Bachelor's	None	I/R	040100		2			1		
252031	Secondary School Teachers, Except Special and Career/Technical										100200		2					
252031	Secondary School Teachers, Except Special and Career/Technical										100400		2					
252031	Secondary School Teachers, Except Special and Career/Technical										150100		2					
252031	Secondary School Teachers, Except Special and Career/Technical										170100		2					
252031	Secondary School Teachers, Except Special and Career/Technical										190500		1					
252031	Secondary School Teachers, Except Special and Career/Technical										220100		2					
252031	Secondary School Teachers, Except Special and Career/Technical										220500		2		15			
131199	Business Operations Specialists, All Other	9,680	10,710	1,030	218	\$32.98	\$68,585.00	Bachelor's	None	None	050640	2	1	48		1		
131199	Business Operations Specialists, All Other										050970			1	49			
151132	Software Developers, Applications	3,620	5,270	1,650	217	\$50.56	\$105,183.00	Bachelor's	None	None	070600			34		1		
151132	Software Developers, Applications										070700			4				
151132	Software Developers, Applications										070710	1	1	38	76			

I/R- Internship/Residency

Greater Sacramento and Yuba City Metropolitan Statistical Areas 2014-2024 Occupational Projections and Three-Year Average Awards

SOC	Occupational Title	Estimated Employment 2014	Projected Employment 2024	Numeric Change 2014-2024	An Av Total Jobs	Q1 2016 Hourly Wage	Q1 2016 Median Annual	Entry Level Education	Work Experience	On-the-Job Training	TOP	Yuba Cert.	Yuba Degrees	3Yr Av of Awards	Multiple TOP Awards	Occ Ct.
119199	Managers, All Other	6,170	6,750	580	195	\$46.55	\$96,829.50	Bachelor's	<5 years	None	050100			127		1
119199	Managers, All Other										050500		2	468		
119199	Managers, All Other										050600	1	2	73		
119199	Managers, All Other										050640	2	1	48		
119199	Managers, All Other										200100		2			
119199	Managers, All Other										220100		2			
119199	Managers, All Other										220500		2			
119199	Managers, All Other										220700		1			
119199	Managers, All Other										220800		1		716	
253098	Substitute Teachers	6,460	7,170	710	193	\$18.55	\$38,576.00	Bachelor's	None	I/R						1
151133	Software Developers, Systems Software	5,020	6,020	1,000	172	\$44.73	\$93,039.00	Bachelor's	None	None	070600			34		1
151133	Software Developers, Systems Software										070700			4		
151133	Software Developers, Systems Software										070710	1	1	38	76	
132081	Tax Examiners and Collectors, and Revenue Agents	2,850	3,140	290	147	\$24.58	\$51,137.00	Bachelor's	None	MT OJT	050210	1	1	12		1
119021	Construction Managers	3,350	4,120	770	125	\$45.42	\$94,470.50	Bachelor's	None	MT OJT	095700			10		1
192041	Environmental Scientists and Specialists, Including Health	2,700	3,100	400	123	\$37.14	\$77,264.00	Bachelor's	None	None	030100					1
112022	Sales Managers	3,020	3,520	500	122	\$41.71	\$86,749.50	Bachelor's	<5 years	None	050100			127		1
112022	Sales Managers										050500		2	468		
112022	Sales Managers										050600	1	2	73		
112022	Sales Managers										050640	2	1	48		
112022	Sales Managers										050970			1	717	
252022	Middle School Teachers, Except Special and Career/Technical	3,630	4,010	380	119		\$67,403.00	Bachelor's	None	I/R	083900					1
272022	Coaches and Scouts	2,200	2,630	430	119		\$45,678.00	Bachelor's	None	None	083500		1			1
272022	Coaches and Scouts										083560			1	1	
131161	Market Research Analysts and Marketing Specialists	2,890	3,720	830	116	\$30.09	\$62,582.50	Bachelor's	None	None						1
253097	Teachers and Instructors, All Other, Except Substitute Teachers	2,860	3,490	630	116		\$38,353.00	Bachelor's	None	I/R						1
131051	Cost Estimators	1,820	2,420	600	112	\$26.57	\$55,266.00	Bachelor's	None	None	050100			127		1
131051	Cost Estimators										050500		2	468		
131051	Cost Estimators										050600	1	2	73		
131051	Cost Estimators										095200			48	716	

I/R- Internship/Residency; MT OJT- > 1 mo < 12 mos.

Greater Sacramento and Yuba City Metropolitan Statistical Areas 2014-2024 Occupational Projections and Three-Year Average Awards																	
SOC	Occupational Title	Estimated Employment 2014	Projected Employment 2024	Numeric Change 2014-2024	An Av Total Jobs	Q1 2016 Hourly Wage	Q1 2016 Median Annual	Entry Level Education	Work Experience	On-the-Job Training	TOP	Yuba Cert.	Yuba Degrees	3Yr Av of Awards	Multiple TOP Awards	Occ Ct.	
151131	Computer Programmers	3,670	3,740	70	98	\$39.00	\$81,113.50	Bachelor's	None	None	070600			34		1	
151131	Computer Programmers										070700			4			
151131	Computer Programmers										070710	1	1	38	76		
131071	Human Resources Specialists	2,720	3,010	290	95	\$28.82	\$59,932.50	Bachelor's	None	None						1	
119111	Medical and Health Services Managers	2,080	2,480	400	93	\$60.04	\$124,884.50	Bachelor's	<5 years	None	120200					1	
111011	Chief Executives	3,830	4,020	190	84	\$68.01	\$141,447.50	Bachelor's	≥5 years	None						1	
113021	Computer and Information Systems Managers	2,100	2,640	540	78	\$55.58	\$115,608.00	Bachelor's	≥5 years	None	070600			34	34	1	
113011	Administrative Services Managers	2,080	2,420	340	74	\$40.03	\$83,244.50	Bachelor's	<5 years	None	050100			127		1	
113011	Administrative Services Managers										050500		2	468			
113011	Administrative Services Managers										050600	1	2	73			
113011	Administrative Services Managers										050630			11			
113011	Administrative Services Managers										050640	2	1	48			
113011	Administrative Services Managers										050920			1	728		
273091	Interpreters and Translators	1,100	1,620	520	70	\$23.55	\$48,985.00	Bachelor's	None	ST OJT	085010			32		1	
252012	Kindergarten Teachers, Except Special Education	1,660	1,830	170	67		\$65,759.50	Bachelor's	None	I/R						1	
119041	Architectural and Engineering Managers	1,680	1,830	150	66	\$66.99	\$139,329.00	Bachelor's	≥5 years	None	020110					1	
251191	Graduate Teaching Assistants	2,780	2,950	170	66		\$36,177.00	Bachelor's	None	None						1	
131141	Compensation, Benefits, and Job Analysis Specialists	1,950	2,130	180	65	\$30.82	\$64,113.00	Bachelor's	<5 years	None						1	
132072	Loan Officers	2,020	2,320	300	64	\$29.32	\$60,971.00	Bachelor's	None	MT OJT						1	
414011	Sales Representatives, Wholesale and Manufacturing, Technical and Scientific Products	1,340	1,660	320	60	\$38.41	\$79,873.50	Bachelor's	None	MT OJT	050800			1		1	
211021	Child, Family, and School Social Workers	1,480	1,700	220	58	\$21.79	\$45,337.50	Bachelor's	None	None						1	
273031	Public Relations Specialists	1,880	2,250	370	58	\$31.41	\$65,323.00	Bachelor's	None	None	150600		2			1	
131023	Purchasing Agents, Except Wholesale, Retail, and Farm Products	1,450	1,590	140	55	\$26.60	\$55,317.00	Bachelor's	None	LT OJT	050900			13		1	
172141	Mechanical Engineers	1,170	1,350	180	55	\$44.90	\$93,404.00	Bachelor's	None	None						1	
131151	Training and Development Specialists	1,190	1,410	220	51	\$32.42	\$67,428.00	Bachelor's	<5 years	None						1	
151142	Network and Computer Systems Administrators	1,790	2,080	290	51	\$40.39	\$84,015.50	Bachelor's	None	None	070800			109		1	
	Totals	187,750	218,510	30,760	7,021							24	62			41	

I/R- Internship/Residency; MT OJT- > 1 mo < 12 mos. ST OJT- 1 month or less OJT LT OJT- more than 12 months OJT and formal classroom instruction
 Data sources: U.S. Bureau of Labor Statistics' Current Employment Statistics (CES) March 2015 benchmark, Quarterly Census of Employment and Wages (QCEW) industry employment, and Occupational Employment Statistics (OES) data. Centers of Excellence Supply Tables; analysis by Cambridge West Partnership, LLC

Greater Sacramento and Yuba City Metropolitan Statistical Areas													
2014-2024 Occupational Projections and Three-Year Average Awards													
SOC	Occupational Title	An Av Total Jobs	Q1 2016 Hourly Wage	Q1 2016 Median Annual	Entry Level Education	Work Experience	On-the-Job Training	TOP	Yuba Cert.	Yuba Degree	3Yr Av of Awards	Multiple TOP Awards	Occ Ct.
252011	Preschool Teachers, Except Special Education	147	\$13.69	\$28,466.50	Associate	None	None	130500	2	2	426		1
232011	Paralegals and Legal Assistants	64	\$22.70	\$47,214.50	Associate	None	None	140200			146		1
292021	Dental Hygienists	63	\$45.26	\$94,139.50	Associate	None	None	124020			58		1
292012	Medical and Clinical Laboratory Technicians	59	\$21.56	\$44,850.50	Associate	None	None	043000			19		1
292012	Medical and Clinical Laboratory Technicians							095500			8		
292012	Medical and Clinical Laboratory Technicians							120500			12	39	
	Totals	333							2	2			4
Employment Statistics (CES) March 2015 benchmark, Quarterly Census of Employment and Wages (QCEW) industry employment, and Occupational Employment													

Greater Sacramento and Yuba City Metropolitan Statistical Areas 2014-2024 Occupational Projections and Three-Year Average Awards																
SOC	Occupational Title	Estimated Employment 2014	Projected Employment 2024	Numeric Change 2014-2024	An Av Total Jobs	Q1 2016 Hourly Wage	Q1 2016 Median Annual	Entry Level Education	Work Experience	On-the-Job Training	TOP	Yuba Cert.	Yuba Degree	3Yr Av of Awards	Multiple TOP Awards	Occ Ct.
533032	Heavy and Tractor-Trailer Truck Drivers	8,860	10,190	1,330	284	\$20.01	\$41,630.50	Certificate	None	ST OJT	094750					1
319092	Medical Assistants	5,390	7,030	1,640	276	\$16.48	\$34,278.50	Certificate	None	None	120800	#		1,281		1
319092	Medical Assistants										120810			7	1,288	
311014	Nursing Assistants	4,680	5,690	1,010	207	\$15.21	\$31,647.50	Certificate	None	None	123000	#		9		1
311014	Nursing Assistants										123030			97	106	
493023	Automotive Service Technicians and Mechanics	4,690	5,240	550	182	\$20.20	\$42,021.00	Certificate	None	ST OJT	094800	3	2	961		1
319091	Dental Assistants	3,050	3,540	490	124	\$18.98	\$39,474.00	Certificate	None	None	124010			290		1
499021	Heating, Air Conditioning, and Refrigeration Mechanics and Installers	1,820	2,690	870	115	\$23.65	\$49,186.50	Certificate	None	LT OJT	094600			31		1
499021	Heating, Air Conditioning, and Refrigeration Mechanics and Installers										094610			82	113	
292061	Licensed Practical and Licensed Vocational Nurses	2,350	2,820	470	114	\$25.60	\$53,246.00	Certificate	None	None	123000			9		1
292061	Licensed Practical and Licensed Vocational Nurses										123020		1	344	353	
395012	Hairdressers, Hairstylists, and Cosmetologists	2,540	3,000	460	111	\$11.45	\$23,821.00	Certificate	None	None	300700	1	1	1,205		1
332011	Firefighters	2,510	2,710	200	93	\$21.48	\$44,680.00	Certificate	None	LT OJT	213300	3	1	37		1
332011	Firefighters										213350	1	1	8	45	
492022	Telecommunications Equipment Installers and Repairers, Except Line Installers	2,100	2,680	580	78	\$32.07	\$66,693.00	Certificate	None	MT OJT	093430			40		1
292071	Medical Records and Health Information Technicians	1,400	1,720	320	65	\$18.90	\$39,306.50	Certificate	None	None	122300			18		1
292071	Medical Records and Health Information Technicians										122310			82	100	
319011	Massage Therapists	1,740	2,240	500	63	\$17.24	\$35,864.00	Certificate	None	None	126200			45		1
395092	Manicurists and Pedicurists	2,250	2,660	410	60	\$10.81	\$22,485.00	Certificate	None	None	300700	1	1	1,205		1
	Totals	43,380	52,210	8,830	1,772							9	7			13
ST OJT- 1 month or less OJT		MT OJT - > 1 mo < 12 mos.		LT OJT- more than 12 months OJT and formal classroom instruction												
# The College offers a clinical medical assistant short-course and has authority to offer a licensed vocational nursing program. The former might start a student toward the training required to be a nursing assistant, a graduate from the latter program would be overqualified as a candidate for medical assistant or nursing assistant.																

Greater Sacramento and Yuba City Metropolitan Statistical Areas 2014-2024 Occupational Projections and Three-Year Average Awards																
SOC	Occupational Title	Estimated Employment 2014	Projected Employment 2024	Numeric Change 2014-2024	An Av Total Jobs	Q1 2016 Hourly Wage	Q1 2016 Median Annual	Entry Level Education	Work Experience	On-the-Job Training	TOP	Yuba Cert.	Yuba Degree	3Yr Av of Awards	Multiple TOP Awards	Occ Cl.
259041	Teacher Assistants	10,040	11,140	1,100	351		\$31,444.00	Some Coll.	None	None	080200	#				1
433031	Bookkeeping, Accounting, and Auditing Clerks	11,390	11,410	20	117	\$18.47	\$38,421.50	Some Coll.	None	MT OJT	050200	2	1	293		1
151151	Computer User Support Specialists	3,050	3,770	720	111	\$24.80	\$51,572.00	Some Coll.	None	None	070200			21		1
151151	Computer User Support Specialists										070820			178	199	
	Totals	24,480	26,320	1,840	579							2	1			3

MT OJT-> 1 mo < 12 mos.

The College offers several Certificates of Training and Certificates of Achievement in the Early Childhood Education discipline that might prepare a student to enter this occupation.

Appendix J: Industry Cluster Employment Projections 2012-2022

Industry Cluster	Sutter & Yuba Sub-Region Counties			Yolo, Sacramento, El Dorado, Placer, Nevada, Alpine Sub-Region Counties			Glenn, Colusa, Yolo, Sacramento, Sutter, Yuba, Placer, El Dorado, Alpine Capital Region Counties		
	New Job Openings	Replacement Job Openings	Total Projected Job Openings	New Job Openings	Replacement Job Openings	Total Projected Job Openings	New Job Openings	Replacement Job Openings	Total Projected Job Openings
Retail	1,310	1,563	2,873	15,610	26,985		15,951	27,906	
Health Care Services	1,250	876	2,126	21,940	17,692		22,920	18,014	40,934
Hospitality & Tourism	780	1,320	2,100	17,630	29,152		17,650	29,424	47,074
Education & Training	900	1,196	2,096	10,050	22,417	32,467	10,080	23,224	33,304
Agriculture, Food, & Beverages	610	1,366	1,976	2,140	3,854	5,994	3,380	6,604	9,984
Business Services	610	396	1,006	15,651	12,842	28,493	15,940	13,165	29,105
Construction Materials & Services	590	244	834	21,810	7,382	29,192	21,530	7,402	28,932
Financial Services & Real Estate	330	277	607	7,590	10,336	17,926	7,730	10,419	18,149
Social Services	430	172	602	14,400	4,040	18,440	14,700	4,115	18,815
Wholesale Distribution	290	192	482	4,710	4,333	9,043	5,240	4,659	9,899
Transportation & Logistics	180	215	395	4,330	4,829	9,159	4,520	5,098	9,618
Professional & Technical Services	250	137	387	10,400	7,797	18,197	10,700	7,746	18,446
Oil & Gas Products & Services	90	99	189	900	841	1,741	1,010	911	1,921
Household Goods & Services	70	99	169	2,550	1,990	4,540	2,550	2,048	4,598
Entertainment, Media, Publishing	100	54	154	1,570	2,763	4,333	1,620	2,763	4,383
Community & Civic Organizations	30	104	134	1,800	2,855	4,655	1,610	2,791	4,401
Manufacturing	60	62	122	350	784	1,134	530	788	1,318
Information & Communications	50	56	106	5,950	5,405	11,355	5,920	5,296	11,216
Forest Products, Forestry, &	30	54	84	100	367	467	120	396	516
Automotive Products & Services	10	73	83	1,730	1,790	3,520	1,690	1,813	3,503
Energy & Utilities	50	17	67	510	525	1,035	650	540	1,190
Personal Services (Non-Medical)	30	34	64	1,500	1,247	2,747	1,480	1,265	2,745
Fabricated & Other Metal Mfg.	20	42	62	1,110	854	1,964	1,070	857	1,927
Biotechnology	20	3	23	1,960	1,709	3,669	1,940	1,711	3,651
Furniture Manufacturing	10	4	14	480	201	681	480	204	684
Chemical Products Manufacturing	0	7	7	0	99	99	0	150	150
Aerospace	0	7	7	20	396	416	30	410	440
Textiles & Apparel	0	0	0	50	24	74	60	22	82
Totals	8,100	8,669	16,769	166,841	173,509	340,350	171,101	179,741	350,842
source: EDD Regional Economic Analysis									
http://www.labormarketinfo.edd.ca.gov/geography/regional-economic-profiles.html									
7/16/2017									
2012-22 horizon									

Source: California State Employment Development Department, Labor Market Information. *Regional Economic Analysis Profile: Sacramento Economic Sub-Market A* (Alpine, El Dorado, Nevada, Placer, Sacramento, and Yolo Counties) May 2015 and *Regional Economic Analysis Profile: Sacramento Economic Sub-Market B* (Sutter and Yuba Counties) May 2015 and *Regional Planning Unit Summary: Capital* (Alpine, Colusa, El Dorado, Glenn, Placer, Sacramento, Sutter, Yolo, and Yuba Counties) September 2016; analysis by Cambridge West Partnership, LLC

Appendix K: Middle-Skills Jobs: Occupational Projections 2015-2018

Interpreting the Occupational Projection Data

The projections that are estimates based on information the EDD has received through surveys of employers assume that historical trends will continue into the future. The Economic Modeling Specialist International (EMSI) company is under contract to the Chancellor's Office to supply labor market demand projections over a period of three years. Therefore, unforeseen events occurring in the projection period may have an impact on employment levels. The projections should be supplemented, where possible, by documents such as those published by the Centers of Excellence, local and regional economic research materials, chambers of commerce reports, and information from local economic development agencies.

Emerging occupations may not be accurately reflected in the Standard Occupational Classification (SOC) titling, the current estimates of employment, or the future projections. Real-time LMI job posting data may be a good source of information about emerging trends and occupations.

The 2010 SOC system is used by federal and state agencies to classify workers into occupational categories for the purpose of collecting, calculating, or disseminating data. Workers are classified into one of 840 detailed occupations, which is a grouping of job titles that have a similar set of activities or tasks. The SOC classification system is managed by the Bureau of Labor Statistics (BLS) and will be updated next in 2018.

The typical entry-level education is also a coding system managed by the BLS. Local practice in a region may vary. The criteria used to select occupations that are considered middle skills is listed separately.

Wage data is aggregated at the county level, but does vary across counties for the same occupation. There can also be variation across counties on the entry-level education, on-the-job training, and work experience for the same occupation.

Determining a labor market gap using the demand data in conjunction with the supply data assembled by the Centers of Excellence should be done with caution.

Interpreting the Supply Data

The California community college data mart is the source of awards granted in that system. The California-specific Taxonomy of Programs (TOP) coding system is the means by which award data is organized. The counts in the data mart represent awards given, not the number of students who received the award. The federal Integrated Postsecondary Education Data system (IPEDS) reporting system is the source of awards from postsecondary institutions other than the California community colleges comes. There is a one-year lag in the availability of that data. That federal reporting system uses the Classification of Instructional Programs (CIP) coding system. There may be errors in cross walking data from the CIP to TOP codes. The CIP code system is more detailed and nuanced compared to the TOP code system. There are inconsistencies in the classification of awards below the associate degree between the IPEDS and California community college system. IPEDS classifies by the duration of the program while the California public institutions classify by semester units.

It is very important to consider supply data on a regional basis rather than a single institution. That will include neighboring institutions whose graduates are also competing for job openings. Unfortunately, there is no agreement on the learning outcomes from educational programs.

It is *stressed* to be aware that among the community colleges there can be differences in the TOP code each college selects for the same program of study.

Often, colleges look at graduation numbers to determine the supply of potential workers. However, this might underestimate or overestimate the number of qualified individuals. For example, community college students need to petition to receive an award once they meet the requirements, and some do not complete this final step. Students may not get a job in their field of study, or they may move out of the region to find work. In addition, skills-builder students who pass community college career and technical education courses frequently go on to secure significant wage gains, even if they do not complete a program. Completion numbers also do not account for differences in educational preferences or unique skills that program graduates possess (for example, being bilingual).

In addition to graduates of educational programs, there are other considerations on the supply side, such as existing underemployed/unemployed workers with the needed skills or work experience in the labor pool or graduates from outside the region able to take jobs are two other considerations.

The following tables are sorted by the Standard Occupational Classification code values for the occupations.

Yuba College				Doing What Matters Greater Sacramento Region												
Cert	Degree	TOP	SOC	Middle-Skills Occupation	Entry Level	2015	2018	Change 2015-18	% Change	New & Replacements	Annual Openings	10% Hrly*	Median Hrl	3-Yr Av**	Multiple TOP Awards	Occ Ct.
		050100	113011	Administrative Services Managers	Bachelor's degree	2,319	2,429		4.8%	246	82	\$23.88	\$42.36	127		1
1	2	050500	113011	Administrative Services Managers	Bachelor's degree									468		
	2	050600	113011	Administrative Services Managers	Bachelor's degree									73		
		050630	113011	Administrative Services Managers	Bachelor's degree									11		
2	1	050640	113011	Administrative Services Managers	Bachelor's degree									48		
		050920	113011	Administrative Services Managers	Bachelor's degree									1	728	
		050100	113051	Industrial Production Managers	Bachelor's degree	684	704	20	2.9%	81	27	\$23.29	\$41.91	127		1
	2	050500	113051	Industrial Production Managers	Bachelor's degree									468		
1	2	050600	113051	Industrial Production Managers	Bachelor's degree									73	668	
		095700	119021	Construction Managers	Bachelor's degree	3,535	3,487	-48	-1.4%	285	95	\$21.71	\$34.50	10		1
			119161	Emergency Management Directors	Bachelor's degree	86	90	4	4.2%	7	2	\$33.83	\$58.51			1
		050100	131051	Cost Estimators	Bachelor's degree	2,179	2,292	113	5.2%	349	116	\$16.76	\$32.35	127		1
	2	050500	131051	Cost Estimators	Bachelor's degree									468		
1	2	050600	131051	Cost Estimators	Bachelor's degree									73		
		095200	131051	Cost Estimators	Bachelor's degree									48	716	
		051000	131081	Logisticians	Bachelor's degree	439	464	24	5.5%	51	17	\$23.78	\$38.33			1
			131141	Compensation, Benefits, and Job Analysis Specialists	Bachelor's degree	2,054	2,081	27	1.3%	180	60	\$20.33	\$28.77			1
			131151	Training and Development Specialists	Bachelor's degree	1,454	1,546	93	6.4%	205	68	\$19.53	\$34.02			1
		051100	132021	Appraisers and Assessors of Real Estate	Bachelor's degree	595	604	9	1.4%	51	17	\$21.51	\$28.06	72		1
		050400	132071	Credit Counselors	Bachelor's degree	206	219	13	6.3%	23	8	\$15.86	\$25.40	2		1
			132072	Loan Officers	Bachelor's degree	2,271	2,233	-38	-1.7%	161	54	\$18.61	\$30.64			1
1	1	050210	132081	Tax Examiners and Collectors, and Revenue Agents	Bachelor's degree	3,246	3,269	23	0.7%	418	139	\$17.91	\$28.37	12		1
		070800	151142	Network and Computer Systems Administrators	Bachelor's degree	2,001	2,113	111	5.6%	201	67	\$23.04	\$41.59	109		1
		070800	151143	Computer Network Architects	Bachelor's degree	688	723	35	5.1%	77	26	\$39.52	\$61.68	109		1
		070810	151143	Computer Network Architects	Bachelor's degree									136	245	
		070100	151199	Computer Occupations, All Other	Bachelor's degree	1,183	1,226	43	3.6%	106	35	\$18.97	\$36.10	65		1
		070200	151199	Computer Occupations, All Other	Bachelor's degree									21		
		070600	151199	Computer Occupations, All Other	Bachelor's degree									34		
		079900	151199	Computer Occupations, All Other	Bachelor's degree									11		
		220610	151199	Computer Occupations, All Other	Bachelor's degree									27	158	
1		210540	194092	Forensic Science Technicians	Bachelor's degree	131	142	11	8.3%	29	10	\$20.79	\$39.15			1
		080900	252051	Special Education Teachers, Preschool	Bachelor's degree	126	146	20	15.8%	26	9	\$21.17	\$39.01			1

Yuba College				Doing What Matters Greater Sacramento Region													
Cert	Degree	TOP	SOC	Middle-Skills Occupation	Entry Level	2015	2018	Change 2015-18	% Change	New & Replacements	Annual Openings	10% Hrly*	Median Hrl	3-Yr Av**	Multiple TOP Awards	Occ Ct.	
		061400	271014	Multimedia Artists and Animators	Bachelor's degree	259	264	5	1.9%	25	8	\$13.03	\$19.12	48		1	
		061440	271014	Multimedia Artists and Animators	Bachelor's degree									8			
		061460	271014	Multimedia Artists and Animators	Bachelor's degree									7			
		103000	271014	Multimedia Artists and Animators	Bachelor's degree									32	95		
	1	101300	271021	Commercial and Industrial Designers	Bachelor's degree	186	191	6	3.1%	21	7	\$18.48	\$25.78	2		1	
		130310	271022	Fashion Designers	Bachelor's degree	96	100	4	3.8%	12	4	\$16.77	\$27.25	24		1	
		061400	271024	Graphic Designers	Bachelor's degree	1,754	1,758	4	0.2%	160	53	\$13.45	\$19.60	48		1	
		061460	271024	Graphic Designers	Bachelor's degree									7			
	1	101300	271024	Graphic Designers	Bachelor's degree									2			
		103000	271024	Graphic Designers	Bachelor's degree									32	89		
	1	2	060400	272012	Producers and Directors	Bachelor's degree	536	548	13	2.4%	74	25	\$16.09	\$22.88	9	1	
			060410	272012	Producers and Directors	Bachelor's degree								1			
			060420	272012	Producers and Directors	Bachelor's degree								4			
			061220	272012	Producers and Directors	Bachelor's degree								7			
	1		100700	272012	Producers and Directors	Bachelor's degree									21		
	1	2	060400	273011	Radio and Television Announcers	Bachelor's degree	284	280	-5	-1.7%	38	13	\$9.79	\$14.52	9	1	
			060410	273011	Radio and Television Announcers	Bachelor's degree								1			
			060420	273011	Radio and Television Announcers	Bachelor's degree								4			
	2		150600	273011	Radio and Television Announcers	Bachelor's degree									14		
			085010	273091	Interpreters and Translators	Bachelor's degree	1,127	1,246	119	10.5%	177	59	\$15.52	\$25.98	32	1	
			061220	274031	Camera Operators, Television, Video, and Motion Picture	Bachelor's degree	104	108	4	3.9%	9	3	\$17.91	\$24.92	7	1	
	1	2	060400	274032	Film and Video Editors	Bachelor's degree	123	134	11	8.8%	13	4	\$14.76	\$22.07	9	1	
			060420	274032	Film and Video Editors	Bachelor's degree								4			
			061220	274032	Film and Video Editors	Bachelor's degree								7	20		
			093470	292011	Medical and Clinical Laboratory Technologists	Bachelor's degree	585	637	53	9.0%	91	30	\$24.73	\$47.55		1	
			299099	Healthcare Practitioners and Technical Workers, All Other	Bachelor's degree	386	412	27	6.9%	51	17	\$15.15	\$25.20		1		
			011510	399032	Recreation Workers	Bachelor's degree	3,812	4,058	247	6.5%	473	158	\$9.11	\$11.80		1	
			050400	439111	Statistical Assistants	Bachelor's degree	64	64	0	-0.2%	10	3	\$17.40	\$22.66	2	1	
			452011	Agricultural Inspectors	Bachelor's degree	252	256	3	1.2%	22	7	\$10.15	\$14.98		1		
			535021	Captains, Mates, and Pilots of Water Vessels	Bachelor's degree	111	112	0	0.2%	23	8	\$17.43	\$33.99		1		
			095900	535031	Ship Engineers	Bachelor's degree	54	55	1	2.0%	8	3	\$18.22	\$34.47		1	
	25	76%	degree/occupations count			Totals	34,945	36,009	952		3,703	1,234					33
*10% of the workers in this occupation earn less than this hourly wage. **public and private institutions						**public and private institutions											
Source: Centers of Excellence. Greater Sacramento Region Supply and Demand Database; analysis by Cambridge West Partnership, LLC																	

Yuba College					Doing What Matters Greater Sacramento Region											
Cert	Degree	TOP	SOC	Middle-Skills Occupation	Entry Level	2015	2018	Change 2015-18	% Change	New & Replacements	Annual Openings	10% Hrly*	Median Hrl	3-Yr Av**	Multiple TOP Awards	Occ Ct.
		125500	119061	Funeral Service Managers	Associate degree	65	69	4	5.8%	5	2	\$15.67	\$32.03	17		1
		061430	151134	Web Developers	Associate degree	1,133	1,234	101	8.9%	147	49	\$15.67	\$31.02	17		1
		070600	151134	Web Developers	Associate degree									34		
		070700	151134	Web Developers	Associate degree									4		
1	1	070710	151134	Web Developers	Associate degree									38		
		070900	151134	Web Developers	Associate degree									13	106	
		070600	151152	Computer Network Support Specialists	Associate degree	1,046	1,113	67	6.4%	113	38	\$23.35	\$39.83	34		1
		070800	151152	Computer Network Support Specialists	Associate degree									109		
		070810	151152	Computer Network Support Specialists	Associate degree									136		
		070820	151152	Computer Network Support Specialists	Associate degree									178	457	
		020100	173011	Architectural and Civil Drafters	Associate degree	861	876	15	1.7%	64	21	\$17.20	\$26.93	10		1
		095300	173011	Architectural and Civil Drafters	Associate degree									52		
2	1	095310	173011	Architectural and Civil Drafters	Associate degree									3		
		095300	173012	Electrical and Electronics Drafters	Associate degree	259	273	14	5.2%	25	8	\$19.71	\$34.49	52		1
		095300	173013	Mechanical Drafters	Associate degree	218	226	8	3.8%	23	8	\$17.44	\$29.27	52		1
		095300	173019	Drafters, All Other	Associate degree	48	51	3	6.1%	7	2	\$16.71	\$26.76	52		1
			173021	Aerospace Engineering and Operations Technicians	Associate degree	102	105	3	2.9%	9	3	\$19.14	\$28.06			1
		092400	173022	Civil Engineering Technicians	Associate degree	712	736	24	3.4%	79	26	\$18.86	\$32.38	5		1
		092400	173023	Electrical and Electronics Engineering Technicians	Associate degree	741	766	24	3.3%	89	30	\$16.62	\$31.74	5		1
		093400	173023	Electrical and Electronics Engineering Technicians	Associate degree									261		
		093410	173023	Electrical and Electronics Engineering Technicians	Associate degree									4		
		093430	173023	Electrical and Electronics Engineering Technicians	Associate degree									40		
		093440	173023	Electrical and Electronics Engineering Technicians	Associate degree									13		
		095220	173023	Electrical and Electronics Engineering Technicians	Associate degree									74	397	
		093500	173024	Electro-Mechanical Technicians	Associate degree	34	38	4	11.9%	7	2	\$16.57	\$28.44			1
		030300	173025	Environmental Engineering Technicians	Associate degree	90	96	6	6.4%	14	5	\$16.98	\$28.65	11		1
		092400	173026	Industrial Engineering Technicians	Associate degree	82	91	9	11.1%	15	5	\$19.94	\$31.04	5		1
		093420	173026	Industrial Engineering Technicians	Associate degree									4		
1	1	095600	173026	Industrial Engineering Technicians	Associate degree										9	
		092400	173027	Mechanical Engineering Technicians	Associate degree	149	159	10	6.9%	21	7	\$15.84	\$26.58	5		1
		094500	173027	Mechanical Engineering Technicians	Associate degree									31	36	

Yuba College				Doing What Matters Greater Sacramento Region												
Cert	Degree	TOP	SOC	Middle-Skills Occupation	Entry Level	2015	2018	Change 2015-18	% Change	New & Replacements	Annual Openings	10% Hrly*	Median Hrl	3-Yr Av**	Multiple TOP Awards	Occ Ct.
		092400	173029	Engineering Technicians, Except Drafters, All Other	Associate degree	390	405	16	4.0%	46	15	\$13.19	\$25.68	5		1
		093420	173029	Engineering Technicians, Except Drafters, All Other	Associate degree									4		
		099900	173029	Engineering Technicians, Except Drafters, All Other	Associate degree									8	17	
	1	010100	194011	Agricultural and Food Science Technicians	Associate degree	258	263	5	1.8%	34	11	\$10.70	\$15.74	21		1
		095500	194031	Chemical Technicians	Associate degree	179	191	12	6.7%	29	10	\$12.80	\$22.92	8		1
		095430	194041	Geological and Petroleum Technicians	Associate degree	52	54	2	4.2%	5	2	\$13.94	\$26.68			1
			194051	Nuclear Technicians	Associate degree	0	0	0		0	0					1
	2	220100	194061	Social Science Research Assistants	Associate degree	89	98	9	10.3%	15	5	\$16.30	\$20.18			1
		192000	194091	Environmental Science/Protection Technicians - Inc Hlth	Associate degree	365	372	7	2.0%	53	18	\$14.91	\$17.79			1
		011400	194093	Forest and Conservation Technicians	Associate degree	955	960	5	0.5%	126	42	\$12.22	\$15.52			1
		043000	194099	Life, Physical, and Social Science Technicians, All Other	Associate degree	413	434	22	5.2%	76	25	\$16.31	\$25.39	19		1
		140200	232011	Paralegals and Legal Assistants	Associate degree	1,897	1,911	13	0.7%	153	51	\$17.20	\$27.86	146		1
2	2	130500	252011	Preschool Teachers, Except Special Education	Associate degree	3,932	3,894	-38	-1.0%	425	142	\$10.15	\$13.05	426		1
			274012	Broadcast Technicians	Associate degree	241	237	-3	-1.4%	19	6	\$10.85	\$18.42			1
		122600	291124	Radiation Therapists	Associate degree	45	52	6	13.9%	10	3	\$31.36	\$56.80			1
		121000	291126	Respiratory Therapists	Associate degree	892	946	54	6.0%	111	37	\$31.17	\$46.52	19		1
		123000	291141	Registered Nurses	Associate degree	20,157	21,795	1,638	8.1%	3,164	1,055	\$28.49	\$55.52	9		1
1	123010	291141	Registered Nurses	Associate degree										272	281	
		043000	292012	Medical and Clinical Laboratory Technicians	Associate degree	1,355	1,464	109	8.0%	214	71	\$14.69	\$23.17	19		1
		095500	292012	Medical and Clinical Laboratory Technicians	Associate degree	1,355								8		
		120500	292012	Medical and Clinical Laboratory Technicians	Associate degree	1,355								12	39	
		124020	292021	Dental Hygienists	Associate degree	2,293	2,466	173	7.6%	302	101	\$39.07	\$53.32	58		1
		121300	292031	Cardiovascular Technologists and Technicians	Associate degree	258	288	30	11.5%	38	13	\$17.51	\$36.25			1
		122700	292032	Diagnostic Medical Sonographers	Associate degree	428	475	47	10.9%	74	25	\$27.88	\$49.16	10		1
		122600	292033	Nuclear Medicine Technologists	Associate degree	121	125	3	2.7%	14	5	\$39.65	\$53.35			1
1	122500	292034	Radiologic Technologists	Associate degree	1,171	1,256	85	7.3%	152	51	\$22.49	\$43.94	16		1	
			292035	Magnetic Resonance Imaging Technologists	Associate degree	159	170	11	6.8%	21	7	\$25.63	\$45.73			1
		130600	292051	Dietetic Technicians	Associate degree	252	270	18	7.1%	30	10	\$10.40	\$19.35	3		1
		130620	292051	Dietetic Technicians	Associate degree	252								16		
		130660	292051	Dietetic Technicians	Associate degree	252								1	20	

Yuba College				Doing What Matters Greater Sacramento Region												
Cert	Degree	TOP	SOC	Middle-Skills Occupation	Entry Level	2015	2018	Change 2015-18	% Change	New & Replacements	Annual Openings	10% Hrly*	Median Hrl	3-Yr Av**	Multiple TOP Awards	Occ Ct.
		121000	292054	Respiratory Therapy Technicians	Associate degree	23	25	2	7.7%	3	1	\$23.95	\$40.87	19		1
	1	010210	292056	Veterinary Technologists and Technicians	Associate degree	1,321	1,480	159	12.0%	203	68	\$10.75	\$19.17	100		1
		121800	312011	Occupational Therapy Assistants	Associate degree	110	131	21	18.8%	30	10	\$25.61	\$43.29	29		1
		122200	312021	Physical Therapist Assistants	Associate degree	327	379	52	16.0%	77	26	\$24.77	\$39.33	24		1
		125500	394031	Morticians, Undertakers, and Funeral Directors	Associate degree	87	94	7	7.9%	17	6	\$16.32	\$28.64	17		1
		061450	439031	Desktop Publishers	Associate degree	99	92	-7	-7.1%	7	2	\$17.27	\$22.82			1
			492021	Radio, Cellular, and Tower Equipment Installers and Repairs	Associate degree	206	186	-21	-10.0%	10	3	\$18.70	\$25.28			1
		095000	492091	Avionics Technicians	Associate degree	69	72	3	4.3%	7	2	\$21.37	\$36.67	30		1
			499061	Camera and Photographic Equipment Repairers	Associate degree	13	14	1	7.7%	2	1	\$12.53	\$22.08			1
		043000	499062	Medical Equipment Repairers	Associate degree	218	231	13	5.9%	32	11	\$16.19	\$27.12	19		1
		093460	499062	Medical Equipment Repairers	Associate degree									20	39	
		093420	519141	Semiconductor Processors	Associate degree	105	111	6	5.8%	15	5	\$11.13	\$16.53	4		1
		302030	532021	Air Traffic Controllers	Associate degree	96	98	2	1.9%	13	4	\$38.68	\$72.20	21		1
	11	22%	degree/occupations count			Totals		51,360	50,908	2,754		6,145	2,050			49
*10% of the workers in this occupation earn less than this hourly wage. **public and private institutions						**public and private institutions										
Source: Centers of Excellence. Greater Sacramento Region Supply and Demand Database; analysis by Cambridge West Partnership, LLC.																

Yuba College				Doing What Matters Greater Sacramento Region												
Cert	Degree	TOP	SOC	Middle-Skills Occupation	Entry Level	2015	2018	Change 2015-18	% Change	New & Replacements	Annual Openings	10% Hrly*	Median Hrl	3-Yr Av**	Multiple TOP Awards	Occ Ct.
		051200	131032	Insurance Appraisers, Auto Damage	Certificate	362	358	-4	-1.2%	54	18	\$20.91	\$29.64			1
		051430	232091	Court Reporters	Certificate	277	272	-5	-1.7%	18	6	\$29.31	\$34.51	46		1
		140200	232091	Court Reporters	Certificate									146	192	
		160200	254031	Library Technicians	Certificate	712	745	33	4.6%	138	46	\$13.96	\$19.13	13		1
		100500	274011	Audio and Video Equipment Technicians	Certificate	428	450	22	5.1%	50	17	\$9.83	\$20.29	50		1
		100500	274014	Sound Engineering Technicians	Certificate	89	95	6	6.8%	12	4	\$15.98	\$19.64	50		1
		100600	274014	Sound Engineering Technicians	Certificate									5	55	
		125000	292041	Emergency Medical Technicians and Paramedics	Certificate	1,115	1,253	138	12.4%	197	66	\$11.06	\$21.25	1		1
		125100	292041	Emergency Medical Technicians and Paramedics	Certificate									15	16	
1		123900	292053	Psychiatric Technicians	Certificate	257	271	14	5.5%	27	9	\$16.52	\$27.37	2		1
		121700	292055	Surgical Technologists	Certificate	710	779	70	9.8%	96	32	\$20.03	\$36.54	21		1
		121900	292057	Ophthalmic Medical Technicians	Certificate	198	229	31	15.5%	37	12	\$12.97	\$21.79			1
		123000	292061	Licensed Practical and Licensed Vocational Nurses	Certificate	2,996	3,375	379	12.6%	666	222	\$21.41	\$29.93	9		1
1		123020	292061	Licensed Practical and Licensed Vocational Nurses	Certificate									344	353	
		122300	292071	Medical Records and Health Information Technicians	Certificate	1,584	1,715	131	8.3%	243	81	\$12.77	\$23.36	18		1
		122310	292071	Medical Records and Health Information Technicians	Certificate									82	100	
		123000	311014	Nursing Assistants	Certificate	5,630	6,411	781	13.9%	1,201	400	\$10.38	\$15.90	9		1
		123030	311014	Nursing Assistants	Certificate									97	106	
		126200	319011	Massage Therapists	Certificate	1,774	1,978	204	11.5%	248	83	\$9.59	\$15.75	45		1
		124010	319091	Dental Assistants	Certificate	3,436	3,705	268	7.8%	543	181	\$13.05	\$20.71	290		1
		120800	319092	Medical Assistants	Certificate	5,990	6,637	647	10.8%	1,061	354	\$11.91	\$18.87	1281		1
		120810	319092	Medical Assistants	Certificate									7	1288	
	1	051420	319094	Medical Transcriptionists	Certificate	538	547	9	1.7%	52	17	\$12.72	\$20.58	161		1
		120820	319094	Medical Transcriptionists	Certificate									45	206	
		120510	319097	Phlebotomists	Certificate	536	594	57	10.7%	89	30	\$13.46	\$20.87	123		1
3	1	213300	331021	First-Line Supervisors of Fire Fighting and Prevention Workers	Certificate	385	402	17	4.4%	70	23	\$29.91	\$48.62	37		1

Yuba College				Doing What Matters Greater Sacramento Region												
Cert	Degree	TOP	SOC	Middle-Skills Occupation	Entry Level	2015	2018	Change 2015-18	% Change	New & Replacements	Annual Openings	10% Hrly*	Median Hrl	3-Yr Av**	Multiple TOP Awards	Occ Ct.
3	1	213300	332011	Firefighters	Certificate	2,949	3,056	107	3.6%	370	123	\$12.51	\$29.41	37		1
1	1	213350	332011	Firefighters	Certificate									8	45	
1	1	130630	352013	Cooks, Private Household	Certificate	0	0	0		0	0			402		1
		125500	394011	Embalmers	Certificate	32	33	1	1.7%	1	0	\$12.83	\$20.65	17		1
			395011	Barbers	Certificate	361	377	16	4.3%	41	14	\$9.12	\$10.98			1
1	1	300700	395012	Hairdressers, Hairstylists, and Cosmetologists	Certificate	5,314	5,817	503	9.5%	969	323	\$9.67	\$11.96	1205		1
1	1	300700	395091	Makeup Artists, Theatrical and Performance	Certificate	16	17	1	9.1%	1	0	\$12.70	\$22.22	1205		1
1	1	300700	395092	Manicurists and Pedicurists	Certificate	2,254	2,451	197	8.8%	255	85	\$8.49	\$10.46	1205		1
1	1	300700	395094	Skincare Specialists	Certificate	324	373	49	15.0%	61	20	\$9.72	\$14.22	1205		1
		093430	492022	Telecommunications Equipment Installers and Repairers, Except Line Installers	Certificate	2,241	2,346	105	4.7%	216	72	\$15.57	\$31.43	40		1
		093400	492092	Electric Motor, Power Tool, and Related Repairers	Certificate	57	57	1	1.5%	7	2	\$14.46	\$21.95	261		1
		093400	492093	Electrical and Electronics Installers and Repairers, Transportation Equipment	Certificate	82	83	1	1.3%	9	3	\$17.56	\$23.74	261		1
		094830	492093	Electrical and Electronics Installers and Repairers, Transportation Equipment	Certificate									5	266	
		093400	492094	Electrical and Electronics Repairers, Commercial and Industrial Equipment	Certificate	248	256	8	3.3%	25	8	\$15.30	\$34.57	261		1
		093410	492094	Electrical and Electronics Repairers, Commercial and Industrial Equipment	Certificate									4		
		093420	492094	Electrical and Electronics Repairers, Commercial and Industrial Equipment	Certificate									4	269	
		093400	492095	Electrical and Electronics Repairers, Powerhouse, Substation, and Relay	Certificate	54	60	6	11.6%	14	5	\$21.76	\$37.70	261		1
		093440	492095	Electrical and Electronics Repairers, Powerhouse, Substation, and Relay	Certificate									13	274	
3	2	094800	492096	Electronic Equipment Installers and Repairers, Motor Vehicles	Certificate	59	53	-6	-9.9%	7	2	\$9.70	\$13.18	961		1
			492097	Electronic Home Entertainment Equipment Installers and Repairers	Certificate	158	153	-4	-2.6%	16	5	\$14.04	\$17.24			1
		095000	493011	Aircraft Mechanics and Service Technicians	Certificate	489	510	21	4.2%	61	20	\$17.92	\$29.80	30		1
		095010	493011	Aircraft Mechanics and Service Technicians	Certificate									23		
		095020	493011	Aircraft Mechanics and Service Technicians	Certificate									23	76	

Yuba College				Doing What Matters Greater Sacramento Region												
Cert	Degree	TOP	SOC	Middle-Skills Occupation	Entry Level	2015	2018	Change 2015-18	% Change	New & Replaces	Annual Openings	10% Hrly*	Median Hrl	3-Yr Av**	Multiple TOP Awards	Occ Ct.
		094600	499021	Heating, Air Conditioning, and Refrigeration Mechanics and Installers	Certificate	2,327	2,504	177	7.6%	324	108	\$14.67	\$24.11	31		1
		094610	499021	Heating, Air Conditioning, and Refrigeration Mechanics and Installers	Certificate									82	113	
		095910	499092	Commercial Divers	Certificate	12	13	1	5.6%	0	0	\$18.07	\$21.20			1
				First Line Supervisors of Production and Operating Workers	Certificate	2,468	2,527	60	2.4%	194	65	\$14.53	\$26.24			1
		093600	515111	Prepress Technicians and Workers	Certificate	293	268	-26	-8.7%	21	7	\$11.91	\$17.98	2		1
		094750	533032	Heavy and Tractor-Trailer Truck Drivers	Certificate	11,534	12,278	743	6.4%	1,393	464	\$12.95	\$19.47			1
16	12	28	72%	certificate plus degree/occupations count	Totals	62,319	67,084	4,759		8,787	2,927					39

*10% of the workers in this occupation earn less than this hourly wage. **public and private insti **public and private institutions
Source: Centers of Excellence. Greater Sacramento Region Supply and Demand Database; analysis by Cambridge West Partnership, LLC

Yuba College				Doing What Matters Greater Sacramento Region												
Cert	Degree	TOP	SOC	Middle-Skills Occupation	Entry Level	2015	2018	Change 2015-18	% Change	New & Replace- ments	Annual Openings	10% Hrly*	Median Hrl	3-Yr Av**	Multiple TOP Awards	Occ Ct.
		070200	151151	Computer User Support Specialists	Some college	3,801	4,056	255	6.7%	417	139	\$16.80	\$27.96	21		1
		070820	151151	Computer User Support Specialists	Some college									128	149	
		080200	259041	Teacher Assistants	Some college	10,824	11,364	540	5.0%	1,353	451	\$10.81	\$14.93			1
		080210	259041	Teacher Assistants	Some college											
		080900	259041	Teacher Assistants	Some college											
	1	100700	272011	Actors	Some college	229	244	14	6.2%	39	13	\$10.17	\$15.98			1
		093410	492011	Computer, Automated Teller, and Office Machine Repairers	Some college	1,033	984	-49	-4.7%	91	30	\$12.53	\$16.94	4		1
			499081	Wind Turbine Service Technicians	Some college	56	77	21	36.9%	17	6	\$18.29	\$32.24			1
0	1	20%		certificate plus degree/occupations count	Totals	15,943	16,725	781		1,917	639					5
*10% of the workers in this occupation earn less than this hourly wage. **public and private						**public and private institutions										
Source: Centers of Excellence. <i>Greater Sacramento Region Supply and Demand Database</i> ; analysis by Cambridge West Partnership, LLC																

Yuba College				Doing What Matters Greater Sacramento Region												
Cert	Degree	TOP	SOC	Middle-Skills Occupation	Entry Level	2015	2018	Change 2015-18	% Change	New & Replacements	Annual Openings	10% Hrly*	Median Hrl	3-Yr Av**	Multiple TOP Awards	Occ Ct.
		302000	113071	Transportation, Storage, and Distribution Managers	HS Diploma	810	822	11	1.4%	75	25	\$24.48	\$41.66	20		1
		302010	113071	Transportation, Storage, and Distribution Managers	HS Diploma									24	44	
		010900	119013	Farmers, Ranchers, and Other Agricultural Managers	HS Diploma	1,431	1,325	-106	-7.4%	71	24	\$13.68	\$21.12	21		1
		010930	119013	Farmers, Ranchers, and Other Agricultural Managers	HS Diploma									10		
1		011200	119013	Farmers, Ranchers, and Other Agricultural Managers	HS Diploma									5	36	
		130620	119051	Food Service Managers	HS Diploma	2,618	2,753	135	5.2%	304	101	\$12.48	\$19.39	16		1
		130710	119051	Food Service Managers	HS Diploma									46	62	
		130730	119071	Gaming Managers	HS Diploma	40	41	1	1.4%	6	2	\$20.35	\$34.48			1
		130700	119081	Lodging Managers	HS Diploma	315	301	-14	-4.4%	28	9	\$15.29	\$19.48			1
		130720	119081	Lodging Managers	HS Diploma											
		130730	119081	Lodging Managers	HS Diploma											
		051100	119141	Property, Real Estate, and Community Association Managers	HS Diploma	2,603	2,691	88	3.4%	277	92	\$10.46	\$20.56	72		1
		050800	131022	Wholesale and Retail Buyers, Except Farm Products	HS Diploma	968	998	30	3.1%	121	40	\$19.61	\$26.50	1		1
		050900	131022	Wholesale and Retail Buyers, Except Farm Products	HS Diploma									13		
		050920	131022	Wholesale and Retail Buyers, Except Farm Products	HS Diploma									1	15	
		050900	131023	Purchasing Agents, Except Wholesale, Retail, and Farm Products	HS Diploma	1,631	1,678	47	2.9%	184	61	\$20.18	\$32.53	13		1
		051200	131031	Claims Adjusters, Examiners, and Investigators	HS Diploma	3,675	3,713	38	1.0%	430	143	\$20.62	\$31.91			1
2	1	050640	131199	Business Operations Specialists, All Other	HS Diploma	9,669	9,993	324	3.3%	687	229	\$23.41	\$32.36	48		1
		050970	131199	Business Operations Specialists, All Other	HS Diploma									1	49	
2	1	050200	132082	Tax Preparers	HS Diploma	884	913	29	3.2%	103	34	\$12.36	\$20.05	293		1
1	1	050210	132082	Tax Preparers	HS Diploma									12	305	
		095730	173031	Surveying and Mapping Technicians	HS Diploma	277	285	8	2.9%	29	10	\$22.65	\$31.74	1		1
		220610	173031	Surveying and Mapping Technicians	HS Diploma									27	28	
	1	210400	211093	Social and Human Service Assistants	HS Diploma	3,947	4,274	327	8.3%	583	194	\$10.57	\$18.81	74		1
2	1	210440	211093	Social and Human Service Assistants	HS Diploma									111	185	
		130900	211094	Community Health Workers	HS Diploma	431	470	40	9.2%	77	26	\$12.41	\$16.17	37		1
2	1	210440	211094	Community Health Workers	HS Diploma									111	148	

Yuba College				Doing What Matters Greater Sacramento Region												
Cert	Degree	TOP	SOC	Middle-Skills Occupation	Entry Level	2015	2018	Change 2015-18	% Change	New & Replacements	Annual Openings	10% Hrly*	Median Hrl	3-Yr Av**	Multiple TOP Awards	Occ Ct.
		140200	232093	Title Examiners, Abstractors, and Searchers	HS Diploma	419	414	-5	-1.1%	37	12	\$16.23	\$25.73	146		1
		140200	232099	Legal Support Workers, All Other	HS Diploma	406	411	5	1.2%	36	12	\$17.07	\$29.15	146		1
		100100	271019	Artists and Related Workers, All Other	HS Diploma	100	103	3	3.0%	10	3	\$10.38	\$17.16			1
		010920	271023	Floral Designers	HS Diploma	365	390	24	6.6%	67	22	\$9.52	\$13.36			1
		100800	272031	Dancers	HS Diploma	102	109	7	6.4%	15	5	\$10.32	\$13.38			1
		100800	272032	Choreographers	HS Diploma	32	33	1	2.5%	5	2	\$14.99	\$27.11			1
	1	100700	272099	Entertainers and Performers, Sports and Related Workers, All Other	HS Diploma	211	224	12	5.8%	31	10	\$11.24	\$15.08			1
	2	150600	273012	Public Address System and Other Announcers	HS Diploma	117	123	7	5.6%	18	6	\$9.74	\$12.62			1
	2	100200	274021	Photographers	HS Diploma	1,084	1,113	29	2.7%	147	49	\$10.39	\$15.15			1
1	1	101200	274021	Photographers	HS Diploma									38		
		122100	292052	Pharmacy Technicians	HS Diploma	2,496	2,682	186	7.4%	267	89	\$14.14	\$19.60	192		1
			292081	Opticians, Dispensing	HS Diploma	490	566	76	15.5%	119	40	\$13.31	\$21.06			1
		121100	292099	Health Technologists and Technicians, All Other	HS Diploma	981	1,125	144	14.7%	181	60	\$17.12	\$30.31			1
		121200	292099	Health Technologists and Technicians, All Other	HS Diploma											
		121400	292099	Health Technologists and Technicians, All Other	HS Diploma											
1		123900	311013	Psychiatric Aides	HS Diploma	252	275	23	8.9%	41	14	\$10.99	\$15.23	2		1
		121800	312012	Occupational Therapy Aides	HS Diploma	61	65	4	7.0%	7	2	\$9.83	\$15.25	29		1
		120900	319093	Medical Equipment Preparers	HS Diploma	608	648	40	6.5%	80	27	\$13.46	\$25.34			1
		120830	319099	Healthcare Support Workers, All Other	HS Diploma	733	775	43	5.9%	92	31	\$12.83	\$19.49	49		1
		122000	319099	Healthcare Support Workers, All Other	HS Diploma									15	64	
	1	210510	331011	First-Line Supervisors of Correctional Officers	HS Diploma	637	653	16	2.5%	79	26	\$38.66	\$44.03	22		1
	1	210510	331012	First-Line Supervisors of Police and Detectives	HS Diploma	476	504	28	5.8%	72	24	\$37.90	\$61.42	22	44	
3	1	213300	332021	Fire Inspectors and Investigators	HS Diploma	100	105	4	4.3%	11	4	\$23.76	\$40.77	37		1
1	1	213350	332021	Fire Inspectors and Investigators	HS Diploma									8	45	
			332022	Forest Fire Inspectors and Prevention Specialists	HS Diploma	17	18	1	4.2%	3	1	\$15.21	\$27.25			1
	2	210500	333011	Bailiffs	HS Diploma	11	16	5	47.7%	2	1	\$10.98	\$30.51	2486		1
3	1	210550	333011	Bailiffs	HS Diploma									63	2549	
	1	210510	333012	Correctional Officers and Jailers	HS Diploma	3,109	3,247	138	4.4%	403	134	\$18.50	\$38.66	22		1
	2	210500	333021	Detectives and Criminal Investigators	HS Diploma	1,195	1,219	24	2.0%	113	38	\$24.80	\$38.42	2486		1
3	1	210550	333021	Detectives and Criminal Investigators	HS Diploma									63	2549	

Yuba College				Doing What Matters Greater Sacramento Region													
Cert	Degree	TOP	SOC	Middle-Skills Occupation	Entry Level	2015	2018	Change 2015-18	% Change	New & Replacements	Annual Openings	10% Hrly*	Median Hrl	3-Yr Av**	Multiple TOP Awards	Occ Ct.	
		011520	333031	Fish and Game Wardens	HS Diploma	71	73	2	2.3%	7	2	\$30.02	\$37.52			1	
	2	210500	333051	Police and Sheriff's Patrol Officers	HS Diploma	4,990	5,180	190	3.8%	701	234	\$24.64	\$43.46	2486		1	
3	1	210550	333051	Police and Sheriff's Patrol Officers	HS Diploma									63	2549		
		210530	333052	Transit and Railroad Police	HS Diploma	23	23	0	-0.5%	3	1	\$15.15	\$23.27			1	
		210530	339093	Transportation Security Screeners	HS Diploma	344	345	1	0.2%	24	8	\$17.55	\$18.49			1	
		130600	351011	Chefs and Head Cooks	HS Diploma	1,593	1,692	99	6.2%	173	58	\$13.06	\$21.00	3		1	
1	1	130630	351011	Chefs and Head Cooks	HS Diploma									402			
		130710	351011	Chefs and Head Cooks	HS Diploma									46	451		
		130600	351012	First-Line Supervisors of Food Preparation and Serving Workers	HS Diploma	6,311	6,805	494	7.8%	1,088	363	\$10.11	\$14.62	3		1	
		130620	351012	First-Line Supervisors of Food Preparation and Serving Workers	HS Diploma									16			
1	1	130630	351012	First-Line Supervisors of Food Preparation and Serving Workers	HS Diploma									402			
		130710	351012	First-Line Supervisors of Food Preparation and Serving Workers	HS Diploma									46	467		
			371011	First-Line Supervisors of Housekeeping and Janitorial Workers	HS Diploma	1,519	1,562	43	2.8%	130	43	\$12.25	\$18.24			1	
		010900	371012	First-Line Supervisors of Landscaping, Lawn Service, and Groundskeeping Workers	HS Diploma	1,116	1,166	49	4.4%	114	38	\$15.60	\$20.72	21		1	
		010930	371012	First-Line Supervisors of Landscaping, Lawn Service, and Groundskeeping Workers	HS Diploma									10	31		
		010240	373012	Pesticide Handlers, Sprayers, and Applicators, Vegetation	HS Diploma	289	305	16	5.6%	32	11	\$12.80	\$17.93	20		1	
		010910	373012	Pesticide Handlers, Sprayers, and Applicators, Vegetation	HS Diploma									18			
		010930	373012	Pesticide Handlers, Sprayers, and Applicators, Vegetation	HS Diploma									10	48		
			391011	Gaming Supervisors	HS Diploma	166	178	11	6.8%	27	9	\$13.61	\$23.39			1	
			391012	Slot Supervisors	HS Diploma	81	71	-11	-13.2%	4	1	\$8.45	\$10.58			1	
			391021	First-Line Supervisors of Personal Service Workers	HS Diploma	1,055	1,194	139	13.2%	208	69	\$10.74	\$16.41			1	
		010240	392011	Animal Trainers	HS Diploma	208	209	1	0.7%	31	10	\$9.80	\$11.93	20		1	
		300900	397011	Tour Guides and Escorts	HS Diploma	306	322	16	5.1%	50	17	\$10.76	\$15.60			1	
		300900	397012	Travel Guides	HS Diploma	31	31	1	2.1%	6	2	\$15.13	\$18.83			1	
2	2	130500	399011	Childcare Workers	HS Diploma	8,412	7,480	-933	-11.1%	793	264	\$7.65	\$8.20	426		1	
1		130550	399011	Childcare Workers	HS Diploma									6			
1		130590	399011	Childcare Workers	HS Diploma									11	443		
		1	083500	399031	Fitness Trainers and Aerobics Instructors	HS Diploma	2,418	2,486	69	2.8%	249	83	\$10.67	\$22.85	28		1
1		050650	411011	First-Line Supervisors of Retail Sales Workers	HS Diploma	10,805	11,081	276	2.6%	1,090	363	\$12.16	\$17.15	2		1	

Yuba College				Doing What Matters Greater Sacramento Region												
Cert	Degree	TOP	SOC	Middle-Skills Occupation	Entry Level	2015	2018	Change 2015-18	% Change	New & Replacements	Annual Openings	10% Hrly*	Median Hrl	3-Yr Av**	Multiple TOP Awards	Occ Ct.
		050940	411012	First-Line Supervisors of Non-Retail Sales Workers	HS Diploma	2,474	2,464	-10	-0.4%	142	47	\$16.78	\$25.38			1
		050960	411012	First-Line Supervisors of Non-Retail Sales Workers	HS Diploma											
		050910	413011	Advertising Sales Agents	HS Diploma	789	752	-37	-4.7%	81	27	\$13.58	\$20.45	2		1
		051200	413021	Insurance Sales Agents	HS Diploma	4,607	4,816	210	4.6%	652	217	\$12.71	\$28.47			1
		050940	413041	Travel Agents	HS Diploma	295	281	-14	-4.6%	21	7	\$10.99	\$13.79			1
		300900	413041	Travel Agents	HS Diploma											
		050940	413099	Sales Representatives, Services, All Other	HS Diploma	6,531	6,811	280	4.3%	717	239	\$12.67	\$27.00			1
		050800	414012	Sales Representatives, Wholesale and Manufacturing, Except Technical and Scientific Products	HS Diploma	6,547	6,816	268	4.1%	728	243	\$14.75	\$28.42	1		1
		050900	414012	Sales Representatives, Wholesale and Manufacturing, Except Technical and Scientific Products	HS Diploma									13	14	
		051100	419021	Real Estate Brokers	HS Diploma	916	892	-24	-2.7%	42	14	\$15.04	\$22.89	72		1
		051100	419022	Real Estate Sales Agents	HS Diploma	3,336	3,260	-76	-2.3%	161	54	\$11.31	\$17.69	72		1
		050630	431011	First-Line Supervisors of Office and Administrative Support Workers	HS Diploma	14,478	15,093	615	4.3%	1,304	435	\$17.48	\$30.45	11		1
		051440	431011	First-Line Supervisors of Office and Administrative Support Workers	HS Diploma									2	13	
		050400	433011	Bill and Account Collectors	HS Diploma	1,997	2,021	25	1.2%	210	70	\$13.62	\$18.72	2		1
2	1	050200	433031	Bookkeeping, Accounting, and Auditing Clerks	HS Diploma	12,789	12,855	66	0.5%	608	203	\$12.61	\$19.03	293		1
2	1	050200	433051	Payroll and Timekeeping Clerks	HS Diploma	2,255	2,283	28	1.2%	223	74	\$13.58	\$20.97	293		1
		050920	433061	Procurement Clerks	HS Diploma	395	401	6	1.6%	48	16	\$16.34	\$22.54	1		1
		050400	433071	Tellers	HS Diploma	2,763	2,490	-273	-9.9%	346	115	\$10.22	\$11.96	2		1
2	1	050200	434011	Brokerage Clerks	HS Diploma	211	196	-15	-6.9%	22	7	\$12.85	\$17.94	293		1
		050400	434041	Credit Authorizers, Checkers, and Clerks	HS Diploma	76	81	5	6.3%	10	3	\$14.93	\$19.93	2		1
		051800	434051	Customer Service Representatives	HS Diploma	14,102	15,143	1,041	7.4%	2,144	715	\$11.79	\$19.29			1
		130110	434051	Customer Service Representatives	HS Diploma	14,102	15,143	1,041	7.4%	2,144	715	\$11.79	\$19.29			1
		050400	434131	Loan Interviewers and Clerks	HS Diploma	1,125	1,131	6	0.5%	86	29	\$14.12	\$20.76	2		1
		050400	434141	New Accounts Clerks	HS Diploma	380	327	-52	-13.8%	27	9	\$14.19	\$16.92	2		1
			434161	Human Resources Assistants, Except Payroll and Timekeeping	HS Diploma	1,127	1,156	29	2.6%	79	26	\$15.63	\$22.65			1
		300900	434181	Reservation and Transportation Ticket Agents and Travel Clerks	HS Diploma	640	650	10	1.5%	53	18	\$11.43	\$15.01			1
		051000	435011	Cargo and Freight Agents	HS Diploma	237	255	18	7.4%	41	14	\$15.89	\$26.60			1
		051000	435061	Production, Planning, and Expediting Clerks	HS Diploma	1,943	2,010	68	3.5%	234	78	\$14.92	\$24.23			1
3	3	051400	436011	Executive Secretaries and Executive Administrative Assistants	HS Diploma	5,689	5,701	12	0.2%	247	82	\$17.42	\$24.88	203		1

Yuba College				Doing What Matters Greater Sacramento Region												
Cert	Degree	TOP	SOC	Middle-Skills Occupation	Entry Level	2015	2018	Change 2015-18	% Change	New & Replacements	Annual Openings	10% Hrly*	Median Hrl	3-Yr Av**	Multiple TOP Awards	Occ Ct.
	1	051410	436012	Legal Secretaries	HS Diploma	2,106	2,039	-68	-3.2%	83	28	\$15.51	\$21.58	42		1
		140200	436012	Legal Secretaries	HS Diploma									146	188	
	1	051420	436013	Medical Secretaries	HS Diploma	4,827	5,276	449	9.3%	614	205	\$11.88	\$18.89	161		1
		120820	436013	Medical Secretaries	HS Diploma									45	206	
	3	051400	436014	Secretaries and Administrative Assistants, Except Legal, Medical, and Executive	HS Diploma	16,317	17,015	697	4.3%	1,300	433	\$11.17	\$17.60	203		1
		070210	439021	Data Entry Keyers	HS Diploma	2,066	2,085	19	0.9%	111	37	\$11.95	\$17.13	12		1
		011500	451011	First-Line Supervisors of Farming, Fishing, and Forestry Workers	HS Diploma	466	458	-9	-1.9%	43	14	\$11.74	\$20.02	21		1
		095200	471011	First-Line Supervisors of Construction Trades and Extraction Workers	HS Diploma	4,066	4,194	128	3.1%	362	121	\$21.93	\$30.50	48		1
		095210	471011	First-Line Supervisors of Construction Trades and Extraction Workers	HS Diploma									29		
		095220	471011	First-Line Supervisors of Construction Trades and Extraction Workers	HS Diploma									74		
		095280	471011	First-Line Supervisors of Construction Trades and Extraction Workers	HS Diploma									13		
		095700	471011	First-Line Supervisors of Construction Trades and Extraction Workers	HS Diploma									1	165	
			472011	Boilermakers	HS Diploma	31	34	3	10.1%	7	2	\$21.36	\$36.76			1
		095260	472021	Brickmasons and Blockmasons	HS Diploma	632	724	92	14.6%	124	41	\$19.61	\$28.04			1
		095260	472022	Stonemasons	HS Diploma	128	140	13	9.8%	22	7	\$15.95	\$23.78			1
		095200	472031	Carpenters	HS Diploma	10,702	10,942	241	2.2%	1,061	354	\$13.08	\$19.22	48		1
		095210	472031	Carpenters	HS Diploma	10,702	10,942	241	2.2%	1,061	354	\$13.08	\$19.22	29		1
			472053	Terrazzo Workers and Finishers	HS Diploma	48	49	1	1.3%	5	2	\$13.40	\$21.68			1
		094730	472071	Paving, Surfacing, and Tamping Equipment Operators	HS Diploma	221	234	13	6.0%	26	9	\$19.70	\$24.57			1
		094730	472072	Pile-Driver Operators	HS Diploma	44	44	0	-0.1%	11	4	\$22.26	\$37.18			1
		094730	472073	Operating Engineers and Other Construction Equipment Operators	HS Diploma	2,860	2,938	78	2.7%	244	81	\$19.10	\$30.60			1
		095220	472111	Electricians	HS Diploma	4,166	4,401	235	5.6%	518	173	\$15.91	\$27.11	74		1
		095240	472121	Glaziers	HS Diploma	422	511	89	21.1%	109	36	\$13.13	\$22.76			1
			472132	Insulation Workers, Mechanical	HS Diploma	55	62	8	13.8%	20	7	\$14.45	\$22.92			1
		095230	472152	Plumbers, Pipefitters, and Steamfitters	HS Diploma	3,246	3,455	210	6.5%	415	138	\$15.33	\$24.95			1
			472171	Reinforcing Iron and Rebar Workers	HS Diploma	444	512	68	15.3%	93	31	\$12.08	\$26.76			1
		095640	472211	Sheet Metal Workers	HS Diploma	1,376	1,465	89	6.5%	212	71	\$17.80	\$32.40	18		1
			472221	Structural Iron and Steel Workers	HS Diploma	380	462	82	21.5%	106	35	\$17.22	\$38.67			1
		094610	472231	Solar Photovoltaic Installers	HS Diploma	164	177	12	7.6%	17	6	\$14.68	\$19.50	82		1
		095290	472231	Solar Photovoltaic Installers	HS Diploma	164	177	12	7.6%	17	6	\$14.68	\$19.50			1
		095720	474011	Construction and Building Inspectors	HS Diploma	840	873	33	4.0%	108	36	\$20.45	\$33.04	8		1
			474021	Elevator Installers and Repairers	HS Diploma	193	200	7	3.5%	24	8	\$28.25	\$46.41			1
		094740	474061	Rail-Track Laying and Maintenance Equipment Operators	HS Diploma	72	71	0	-0.6%	9	3	\$16.31	\$27.78	19		1
			475031	Explosives Workers, Ordnance Handling Experts, and Blasters	HS Diploma	0	0	0		1	0					1

Yuba College				Doing What Matters Greater Sacramento Region													
Cert	Degree	TOP	SOC	Middle-Skills Occupation	Entry Level	2015	2018	Change 2015-18	% Change	New & Replacements	Annual Openings	10% Hrly*	Median Hrl	3-Yr Av**	Multiple TOP Awards	Occ Ct.	
		093440	491011	First-Line Supervisors of Mechanics, Installers, and Repairers	HS Diploma	2,677	2,827	150	5.6%	323	108	\$17.00	\$33.73	13		1	
	2	1	094900	493021	Automotive Body and Related Repairers	HS Diploma	1,244	1,321	77	6.2%	171	57	\$14.34	\$19.29	202		1
	3	2	094800	493023	Automotive Service Technicians and Mechanics	HS Diploma	5,834	6,096	262	4.5%	770	257	\$11.18	\$20.01	961		1
			094840	493023	Automotive Service Technicians and Mechanics	HS Diploma											
			094700	493031	Bus and Truck Mechanics and Diesel Engine Specialists	HS Diploma	1,753	1,872	118	6.7%	222	74	\$15.47	\$25.51	178		1
			011600	493041	Farm Equipment Mechanics and Service Technicians	HS Diploma	300	318	17	5.8%	47	16	\$14.75	\$24.36			1
			011600	493042	Mobile Heavy Equipment Mechanics, Except Engines	HS Diploma	781	806	24	3.1%	85	28	\$19.10	\$25.10			1
			094720	493042	Mobile Heavy Equipment Mechanics, Except Engines	HS Diploma											
			094730	493042	Mobile Heavy Equipment Mechanics, Except Engines	HS Diploma											
			094740	493043	Rail Car Repairers	HS Diploma	177	181	4	2.5%	28	9	\$17.65	\$29.88	19		1
			094830	493051	Motorboat Mechanics and Service Technicians	HS Diploma	108	113	5	4.7%	20	7	\$9.57	\$17.17	5		1
			094830	493052	Motorcycle Mechanics	HS Diploma	98	98	1	0.7%	11	4	\$11.55	\$15.66	5		1
			094830	493053	Outdoor Power Equipment and Other Small Engine Mechanics	HS Diploma	359	368	9	2.5%	33	11	\$11.32	\$15.10	5		1
			094850	493092	Recreational Vehicle Service Technicians	HS Diploma	96	98	1	1.4%	13	4	\$12.28	\$19.12			1
			093510	499031	Home Appliance Repairers	HS Diploma	279	280	1	0.2%	35	12	\$14.66	\$18.69			1
				499041	Industrial Machinery Mechanics	HS Diploma	1,268	1,347	79	6.2%	193	64	\$15.45	\$30.62			1
				499044	Millwrights	HS Diploma	105	116	11	10.4%	21	7	\$21.01	\$33.64			1
			093440	499051	Electrical Power-Line Installers and Repairers	HS Diploma	420	514	94	22.3%	156	52	\$24.94	\$55.71	13		1
				499052	Telecommunications Line Installers and Repairers	HS Diploma	854	926	71	8.3%	131	44	\$17.28	\$33.36			1
			096200	499063	Musical Instrument Repairers and Tuners	HS Diploma	57	57	0	-0.1%	7	2	\$10.10	\$11.93			1
				499064	Watch Repairers	HS Diploma	38	36	-1	-3.7%	4	1	\$10.01	\$12.49			1
			094300	499069	Precision Instrument and Equipment Repairers, All Other	HS Diploma	75	74	-1	-1.7%	7	2	\$14.32	\$24.27			1
				499071	Maintenance and Repair Workers, General	HS Diploma	7,912	8,437	526	6.6%	1,198	399	\$10.78	\$19.72			1
				499094	Locksmiths and Safe Repairers	HS Diploma	202	193	-8	-4.1%	32	11	\$13.76	\$19.21			1
			095000	512011	Aircraft Structure, Surfaces, Rigging, and Systems Assemblers	HS Diploma	126	126	0	-0.2%	10	3	\$16.88	\$26.06	30		1
			095010	512011	Aircraft Structure, Surfaces, Rigging, and Systems Assemblers	HS Diploma									23		
			095020	512011	Aircraft Structure, Surfaces, Rigging, and Systems Assemblers	HS Diploma									23	76	
			092400	512022	Electrical and Electronic Equipment Assemblers	HS Diploma	1,928	1,975	47	2.4%	164	55	\$9.80	\$16.69	5		1
			093400	512022	Electrical and Electronic Equipment Assemblers	HS Diploma									261		
			093420	512022	Electrical and Electronic Equipment Assemblers	HS Diploma									4	270	
	1	1	095600	514011	Computer-Controlled Machine Tool Operators, Metal and Plastic	HS Diploma	354	384	29	8.3%	62	21	\$12.56	\$19.22			1
	1	1	095600	514011	Computer-Controlled Machine Tool Operators, Metal and Plastic	HS Diploma											
			095630	514011	Computer-Controlled Machine Tool Operators, Metal and Plastic	HS Diploma											

Yuba College				Doing What Matters Greater Sacramento Region												
Cert	Degree	TOP	SOC	Middle-Skills Occupation	Entry Level	2015	2018	Change 2015-18	% Change	New & Replacements	Annual Openings	10% Hrly*	Median Hrl	3-Yr Av**	Multiple TOP Awards	Occ Ct.
1	1	095600	514012	Computer Numerically Controlled Machine Tool Programmers, Metal and Plastic	HS Diploma	39	44	5	12.6%	14	5	\$22.10	\$33.39			1
1	1	095600	514041	Machinists	HS Diploma	899	948	48	5.4%	138	46	\$13.24	\$22.47			1
		095630	514041	Machinists	HS Diploma											
			514111	Tool and Die Makers	HS Diploma	62	70	8	12.7%	12	4	\$22.31	\$33.94			1
2	1	095650	514121	Welders, Cutters, Solderers, and Brazers	HS Diploma	1,601	1,679	78	4.9%	243	81	\$13.61	\$21.92	53		1
2	1	095650	514122	Welding, Soldering, and Brazing Machine Setters, Operators, and Tenders	HS Diploma	130	129	0	-0.3%	16	5	\$12.75	\$17.18	83		1
		093600	515112	Printing Press Operators	HS Diploma	1,086	1,056	-30	-2.8%	78	26	\$11.52	\$19.46	2		1
		095250	517031	Model Makers, Wood	HS Diploma	7	7	0	0.0%	0	0	\$11.24	\$14.15			1
		095250	517032	Patternmakers, Wood	HS Diploma	5	6	1	20.0%	0	0	\$0.00	\$0.00			1
		095250	517099	Woodworkers, All Other	HS Diploma	66	61	-5	-7.7%	9	3	\$10.93	\$13.01			1
			518011	Nuclear Power Reactor Operators	HS Diploma	30	31	1	2.7%	4	1	\$33.75	\$46.28			1
		093440	518012	Power Distributors and Dispatchers	HS Diploma	55	60	5	8.7%	10	3	\$30.14	\$50.98	13		1
			518013	Power Plant Operators	HS Diploma	287	296	9	3.0%	47	16	\$33.94	\$48.44			1
			518021	Stationary Engineers and Boiler Operators	HS Diploma	364	374	10	2.7%	41	14	\$28.46	\$34.14			1
		095800	518031	Water and Wastewater Treatment Plant and System Operators	HS Diploma	783	844	61	7.8%	135	45	\$20.87	\$33.15	9		1
		095400	518091	Chemical Plant and System Operators	HS Diploma	33	38	4	13.1%	6	2	\$16.14	\$28.69			1
			518092	Gas Plant Operators	HS Diploma	112	114	2	1.7%	13	4	\$16.49	\$38.17			1
		095430	518093	Petroleum Pump System Operators, Refinery Operators, and Gaugers	HS Diploma	48	52	3	7.2%	9	3	\$13.20	\$29.42			1
			518099	Plant and System Operators, All Other	HS Diploma	65	68	3	4.3%	13	4	\$19.72	\$33.57			1
		095400	519011	Chemical Equipment Operators and Tenders	HS Diploma	280	291	11	4.0%	42	14	\$19.09	\$32.85			1
		043000	519061	Inspectors, Testers, Sorters, Samplers, and Weighers	HS Diploma	1,765	1,831	66	3.8%	213	71	\$10.96	\$17.75	19		1
		095500	519061	Inspectors, Testers, Sorters, Samplers, and Weighers	HS Diploma									8	27	
		100910	519071	Jewelers and Precious Stone and Metal Workers	HS Diploma	218	212	-6	-2.6%	19	6	\$10.52	\$12.54			1
		124000	519081	Dental Laboratory Technicians	HS Diploma	473	537	64	13.5%	101	34	\$12.06	\$22.17			1
		124030	519081	Dental Laboratory Technicians	HS Diploma	473	537	64	13.5%	101	34	\$12.06	\$22.17			1
			519082	Medical Appliance Technicians	HS Diploma	76	87	11	14.3%	16	5	\$14.18	\$22.95			1
		096100	519083	Ophthalmic Laboratory Technicians	HS Diploma	515	560	45	8.7%	83	28	\$10.22	\$14.78			1
		121900	519083	Ophthalmic Laboratory Technicians	HS Diploma	515	560	45	8.7%	83	28	\$10.22	\$14.78			1
		093600	519151	Photographic Process Workers and Processing Machine Operators	HS Diploma	143	138	-5	-3.7%	19	6	\$9.85	\$14.31	2		1

Yuba College				Doing What Matters Greater Sacramento Region												
Cert	Degree	TOP	SOC	Middle-Skills Occupation	Entry Level	2015	2018	Change 2015-18	% Change	New & Replacements	Annual Openings	10% Hrly*	Median Hrl	3-Yr Av**	Multiple TOP Awards	Occ Ct.
			519195	Molders, Shapers, and Casters, Except Metal and Plastic	HS Diploma	235	242	8	3.2%	47	16	\$13.47	\$19.28			1
			531011	Aircraft Cargo Handling Supervisors	HS Diploma	62	64	2	3.1%	3	1	\$15.37	\$25.20			1
			531021	First-Line Supervisors of Helpers, Laborers, and Material Movers, Hand	HS Diploma	1,113	1,128	15	1.4%	126	42	\$15.10	\$21.83			1
				First-Line Supervisors of Transportation and Material-Moving Machine												
			051000	and Vehicle Operators	HS Diploma	1,119	1,161	42	3.7%	157	52	\$16.03	\$29.08			1
			302020	Commercial Pilots	HS Diploma	128	147	19	14.6%	28	9	\$22.05	\$45.07	40		1
			302030	Airfield Operations Specialists	HS Diploma	41	42	1	3.2%	4	1	\$15.76	\$30.71			1
			302040	Flight Attendants	HS Diploma	62	71	10	15.5%	14	5	\$15.77	\$26.93			1
			094750	Bus Drivers, Transit and Intercity	HS Diploma	1,522	1,570	49	3.2%	119	40	\$14.14	\$24.56			1
			094750	Bus Drivers, School or Special Client	HS Diploma	1,708	1,868	161	9.4%	248	83	\$10.82	\$18.43			1
			094740	Locomotive Engineers	HS Diploma	279	260	-20	-7.1%	33	11	\$20.50	\$26.30	19		1
			094830	Motorboat Operators	HS Diploma	12	12	0	1.7%	1	0	\$16.09	\$18.19	5		1
			302000	Transportation Inspectors	HS Diploma	193	197	4	2.0%	23	8	\$25.93	\$35.17	20		1
			300900	Transportation Attendants, Except Flight Attendants	HS Diploma	202	208	6	3.0%	19	6	\$10.00	\$15.53			1
57	51	108	64%	certificate plus degree/occupations count	Totals	307,537	318,075	10,517		32,664	10,887					170

*10% of the workers in this occupation earn less than this hourly wage. **public and private institutions

Source: Centers of Excellence. Greater Sacramento Region Supply and Demand Database; analysis by Cambridge West Partnership, LLC

Appendix L: Greater Sacramento Labor Market Middle-Skills Occupational Families Projections

Major Occupational Groups (Number of occupations in group in parentheses)	2015 Jobs	5-Yr Change	5-Yr % Change	5-Yr Replacements	Annual Job Openings	Weighted Median Wages
Office and Administrative Support (29)	99,066	4,459	2%	9,517	2,921	\$20.52
Healthcare Practitioners and Technical (24)	37,955	5,436	15%	4,423	1,972	\$39.69
Healthcare Support (13)	24,484	5,315	17%	3,053	1,674	\$16.19
Installation, Maintenance, and Repair (44)	33,564	2,659	8%	4,296	1,409	\$22.89
Sales and Related (11)	39,273	1,618	1%	4,541	1,301	\$21.82
Construction and Extraction (21)	30,780	1,887	12%	3,503	1,078	\$24.34
Personal Care and Service (14)	23,298	296	7%	2,917	907	\$11.63
Business and Financial Operations (13)	18,932	661	4%	2,990	732	\$29.96
Transportation and Material Moving (22)	16,896	1,930	6%	1,733	717	\$20.52
Protective Service (14)	13,805	557	4%	2,128	537	\$37.60
Production (36)	12,364	988	9%	1,742	535	\$21.04
Education (private), Training and Library (3)	13,144	330	2%	1,850	456	\$14.23
Management (11)	14,465	288	2%	1,614	432	\$29.19
Food Preparation Serving Related (3)	7,524	944	12%	1,098	409	\$14.47
Computer and Mathematical (6)	10,276	822	8%	747	314	\$33.28
Community and Social Services (2)	3,944	599	15%	425	205	\$17.01
Arts, Design, Entertainment, Sports, and Media (11)	3,679	151	4%	523	145	\$17.96
Life, Physical, and Social Science (9)	2,560	108	7%	528	127	\$19.09
Architecture and Engineering (13)	4,003	171	6%	458	126	\$28.95
Legal (4)	2,900	49	0%	356	84	\$28.25
Building and Grounds Cleaning and Maintenance (1)	1,133	81	7%	115	39	\$19.78
Total of All Selected Occupations	414,045	29,349	7%	48,557	16,120	\$23.52

Source: Center of Excellence, Northern California Region. *Regional Labor Market Assessment: Greater Sacramento Region*. August 2016

Appendix M: Associate Degrees for Transfer Comparisons

Transfer Model Curriculum	TOP	UC Pathway	Established (X), In Progress (IP), Interest (I)					
			Yuba	Woodland	Butte	Sierra	Am. River	Sac. City
Administration of Justice	210500		X	X	X	X	X	X
Agriculture Animal Sciences	010200			X				
Agriculture Business	011200			X	X			
Agriculture Plant Sciences	010300			X	X			
Anthropology	220200	Anthropology		X	X	X	X	X
Art History	100100		IP		X	X	X	X
Biology	040100	Biology	X	X	X	X	X	X
Business Administration	050500	Business Administration	X	X	X	X	X	X
Chemistry	190500	Chemistry	X		IP	X		
Child and Adolescent Development	130510				X			X
Communication Studies	150600	Communication Studies	X	X	X	X	X	X
Computer Science	070600	Computer Science	X		X	X	X	
Early Childhood Education (ECE)	130500		X	X	X	X	X	X
Economics	220400	Economics		X	X	X	X	X
Elementary Teacher Education	490120		I		X	X	X	X
English	150100	English	X	X	X	X	X	X
Film, Television, Electronic Media	060420	Film, Television, Electronic Media			X			
Geography	220600				X	X	X	X
Geology	191400			X	X	X	X	X
Global Studies	221020							
History	220500	History	X	X	X	X	X	X
Journalism	060200		IP		X	X	X	X
Kinesiology	127000		X			X	X	X
Mathematics	170100	Mathematics	X	X	X	X	X	X
Music	100400		X		X	X	X	X
Nutrition & Dietetics	130600			X	X	X	X	X
Philosophy	150900	Philosophy				X	X	X
Physics	190200	Physics			X	X	X	
Political Science	220700	Political Science	X		X	X	X	X
Psychology	200100	Psychology	X	X	X	X	X	X
Public Health Science	120100							
Social Justice Studies	220130			X		X		
Social Work and Human Services	210400							
Sociology	220800	Sociology	X	X	X	X	X	X
Spanish	110500		I		X	X	X	X
Studio Arts	100200		X		X	X	X	X
Theater Arts	100700		IP		X	X	X	X
Total	37	16	21	18	30	29	27	26

Source: California Community Colleges Chancellor's Office, Academic Affairs Unit. *ADT Progress Report*. June 7, 2017. Yuba College Instructional Deans, *Personnel Correspondence*, Fall 2017.

Appendix N: Occupational Projections for Selected Programs to Expand

Occupational Title	Annual Average Total Jobs	Q1 2016 Median Annual	Entry Level Education	Area
Registered Nurses	783	\$118,381	Bachelor's	Sac
Registered Nurses	34	\$81,200	Bachelor's	Yuba
<i>Total</i>	<i>817</i>			
Radiologic Technologists	33	\$92,035	Associate	Sac
Radiologic Technologists	3	\$67,423	Associate	Yuba
<i>Total</i>	<i>36</i>			
Psychiatric Technicians	5	\$59,043	Certificate	Sac
Veterinary Technologists and Technicians	49	\$30,587	Associate	Sac
Veterinary Technologists and Technicians	1	\$38,064	Associate	Yuba
<i>Total</i>	<i>50</i>			
Firefighters	84	\$63,122	Certificate	Sac
Firefighters	9	\$26,238	Certificate	Yuba
<i>Total</i>	<i>93</i>			
Police and Sheriff's Patrol Officers	165	\$92,837	HS Diploma	Sac
Police and Sheriff's Patrol Officers	10		HS Diploma	Yuba
<i>Total</i>	<i>175</i>			

Source: Employment Development Department. *Labor Market Information*; analysis by Cambridge West Partnership, LLC

Appendix O: Neighboring Programs For Occupations With Gaps

SOC	Occupational Title	Entry Level Education	Yuba Prog.	TOP	Annual Average Total New Jobs	3 Year Average Graduates	Gap	Public Institutions	Program Control Number	Program Title	Deg_Cert
151121	Computer Systems Analysts	Bachelor's	N	070100	371	222	(149)				
151121 Count											0
259041	Teacher Assistants	Some Coll.	N	080200	351	0	(351)				
259041 Count											0
414011	Sales Representatives, Wholesale and Manufacturing, Technical and Scientific Products	Bachelor's	N	050800	60	1	(59)				
414011 Count											0
119041	Architectural and Engineering Managers	Bachelor's	N	020110	66	0	(66)				
119041 Count											0
311014	Nursing Assistants	Certificate	N	123030	207	106	(101)				
311014	Nursing Assistants	Certificate	N	123000	207	106	(101)				
311014 Count											0
151121	Computer Systems Analysts	Bachelor's	N	070810	371	222	(149)	AMERICAN RIVER	12238	Computer Networking Management	AS Degree
151121 Count											1
113021	Computer and Information Systems Managers	Bachelor's	N	070600	78	34	(44)	AMERICAN RIVER	12236	Computer Science	AS Degree
113021 Count											1
151121	Computer Systems Analysts	Bachelor's	N	070810	371	222	(149)	AMERICAN RIVER	16946	Computer Information Security Essentials	Cert 18+
151121	Computer Systems Analysts	Bachelor's	N	070810	371	222	(149)	AMERICAN RIVER	20110	CIS: Computer Networking Management	Cert 18+
151121	Computer Systems Analysts	Bachelor's	N	070200	371	222	(149)	BUTTE	01319	Computer Information Systems	AS Degree
151121	Computer Systems Analysts	Bachelor's	N	070200	371	222	(149)	BUTTE	31306	Applied Computer and Networking Technologies: System Administration	AS Degree
151121	Computer Systems Analysts	Bachelor's	N	070200	371	222	(149)	BUTTE	31307	Applied Computer and Networking Technologies: Programming	AS Degree
151121	Computer Systems Analysts	Bachelor's	N	070200	371	222	(149)	BUTTE	31300	Applied Computer and Networking Technologies: Computer Networking	AS Degree
151121 Count											6
192041	Environmental Scientists and Specialists, Including Health	Bachelor's	N	030100	123	0	(123)	BUTTE	15151	Environmental Science	AS Degree
192041 Count											1
113021	Computer and Information Systems Managers	Bachelor's	N	070600	78	34	(44)	BUTTE	31304	Applied Computer Graphics: Production/Communication Design	AS Degree
113021	Computer and Information Systems Managers	Bachelor's	N	070600	78	34	(44)	BUTTE	31303	Applied Computer Graphics: Technical/Art Studio	AS Degree
113021	Computer and Information Systems Managers	Bachelor's	N	070600	78	34	(44)	BUTTE	31305	Applied Computer Graphics: Technical/Communication Design	AS Degree
113021	Computer and Information Systems Managers	Bachelor's	N	070600	78	34	(44)	BUTTE	11138	Computer Science	AS Degree
113021	Computer and Information Systems Managers	Bachelor's	N	070600	78	34	(44)	BUTTE	31930	Computer Science	AS-T
113021 Count											5

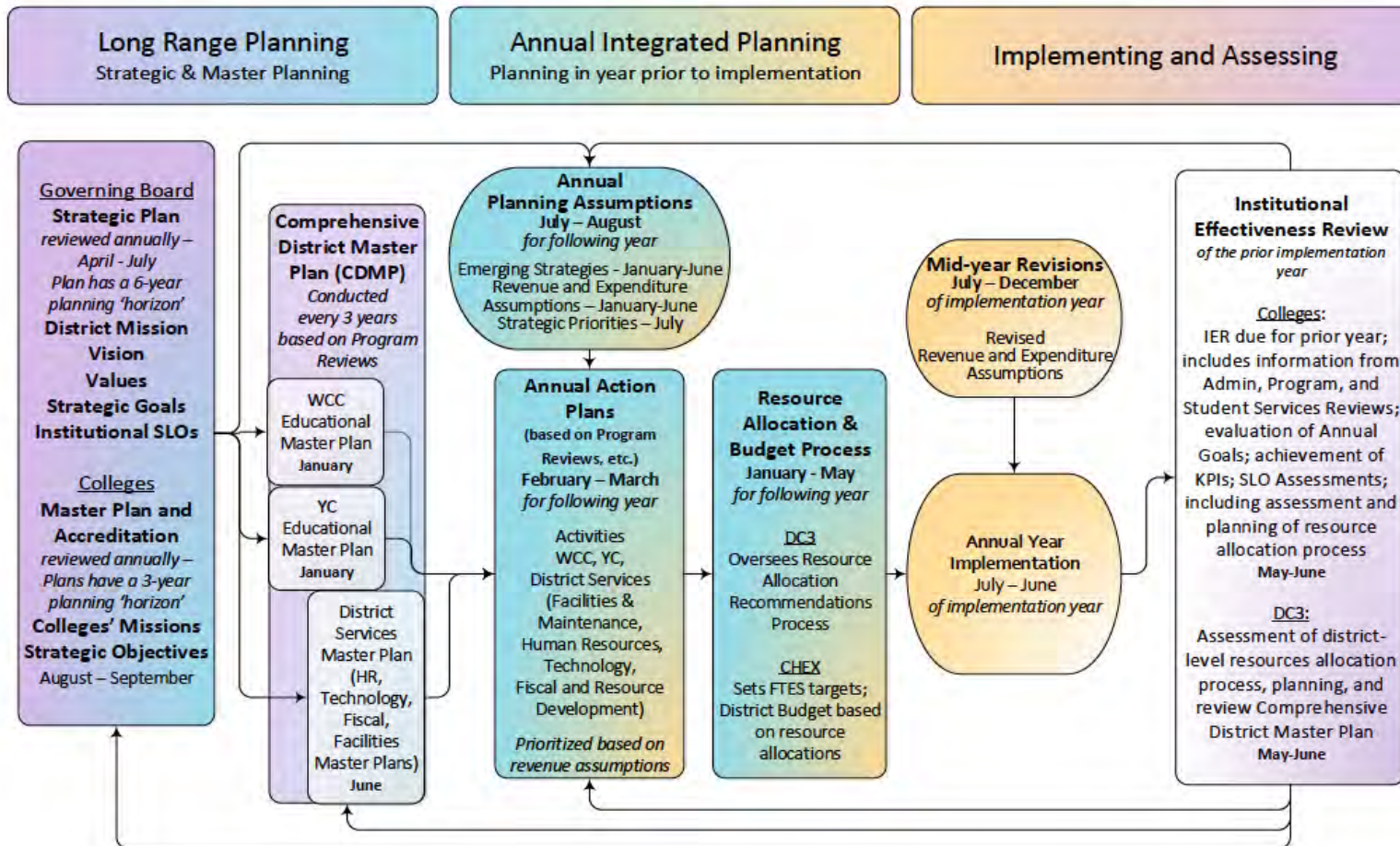
SOC	Occupational Title	Entry Level Education	Yuba Prog.	TOP	Annual Average Total New Jobs	3 Year Average Graduates	Gap	Public Institutions	Program Control Number	Program Title	Deg_Cert
151121	Computer Systems Analysts	Bachelor's	N	070200	371	222	(149)	BUTTE	31236	Applied Computer and Networking Technologies: System Administration	Cert 18+
151121	Computer Systems Analysts	Bachelor's	N	070200	371	222	(149)	BUTTE	31246	Applied Computer and Networking Technologies: Programming	Cert 18+
151121	Computer Systems Analysts	Bachelor's	N	070200	371	222	(149)	BUTTE	31242	Applied Computer and Networking Technologies: Computer Networking	Cert 18+
151121	Computer Systems Analysts	Bachelor's	N	070200	371	222	(149)	SACRAMENTO CITY	12282	Information Processing	AS Degree
151121	Computer Systems Analysts	Bachelor's	N	070200	371	222	(149)	SACRAMENTO CITY	07334	Management Information Systems	AS Degree
151121	Computer Systems Analysts	Bachelor's	N	070810	371	222	(149)	SACRAMENTO CITY	12285	Network Administration	AS Degree
151121	Computer Systems Analysts	Bachelor's	N	070810	371	222	(149)	SACRAMENTO CITY	12286	Network Design	AS Degree
151121	Computer Systems Analysts	Bachelor's	N	070200	371	222	(149)	SACRAMENTO CITY	23006	Management Information Systems	Cert 18+
151121	Computer Systems Analysts	Bachelor's	N	070200	371	222	(149)	SACRAMENTO CITY	23005	Information Processing	Cert 18+
151121	Computer Systems Analysts	Bachelor's	N	070810	371	222	(149)	SACRAMENTO CITY	23009	Network Administration	Cert 18+
151121	Computer Systems Analysts	Bachelor's	N	070810	371	222	(149)	SACRAMENTO CITY	23010	Network Design	Cert 18+
151121	Computer Systems Analysts	Bachelor's	N	070200	371	222	(149)	SIERRA	10827	Computer Science: Management Information Systems	AA Degree
151121	Computer Systems Analysts	Bachelor's	N	070810	371	222	(149)	SIERRA	11965	CIS: Networking	AS Degree
151121	Computer Systems Analysts	Bachelor's	N	070200	371	222	(149)	SIERRA	07964	Computer Science: Management Information Systems	AS Degree
151121 Count											14
119021	Construction Managers	Bachelor's	N	095700	125	10	(115)	SIERRA	33224	Construction Management	AS Degree
119021 Count											1
113021	Computer and Information Systems Managers	Bachelor's	N	070600	78	34	(44)	SIERRA	32722	Computer Science	AS-T
113021 Count											1
151121	Computer Systems Analysts	Bachelor's	N	070810	371	222	(149)	SIERRA	10832	CIS: Networking	AA Degree
151121	Computer Systems Analysts	Bachelor's	N	070810	371	222	(149)	SIERRA	21557	CIS: Networking	Cert 18+
151121 Count											2
113021	Computer and Information Systems Managers	Bachelor's	N	070600	78	34	(44)	YUBA	35850	Computer Science	AS-T
113021 Count											1
										Grand Count	34

Source: Employment Development Department. *Labor Market Information*. Centers of Excellence. *Labor Market Database*. California Community Colleges, Chancellor's Office, Academic Affairs Division, *Curriculum Inventory*; analysis by Cambridge West Partnership, LLC

Appendix P: District Integrated Planning Diagram

Yuba Community College District Planning Process

1/11/2016
Approved by DCAS on 2/4/2016



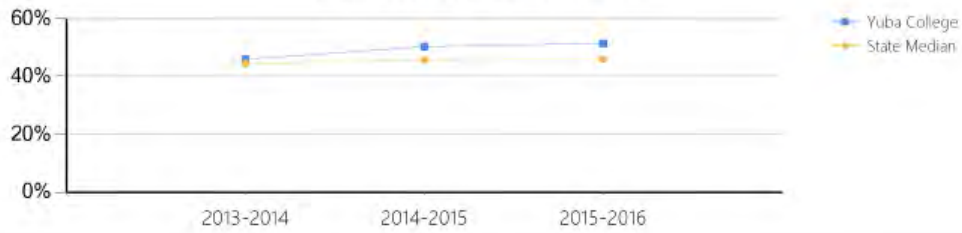
Appendix Q: California Guided Pathways Initiative Project KPI Analysis

Demographics for First Time Ever in College Students			
	2013-2014	2014-2015	2015-2016
19 and younger	68% (738)	70% (695)	68% (648)
20 to 24	18% (192)	16% (162)	16% (156)
25 and older	14% (150)	14% (139)	16% (155)
Asian	8% (81)	8% (75)	8% (72)
Black or African American	3% (35)	4% (37)	4% (43)
Hispanic	32% (342)	33% (328)	35% (334)
Other	15% (166)	9% (91)	11% (108)
White	42% (456)	47% (465)	42% (402)
Female	54% (585)	49% (491)	49% (466)
Male	46% (493)	50% (502)	51% (489)
Unknown	0% (02)	0% (03)	0% (04)
Overall	100% (1,080)	100% (996)	100% (959)

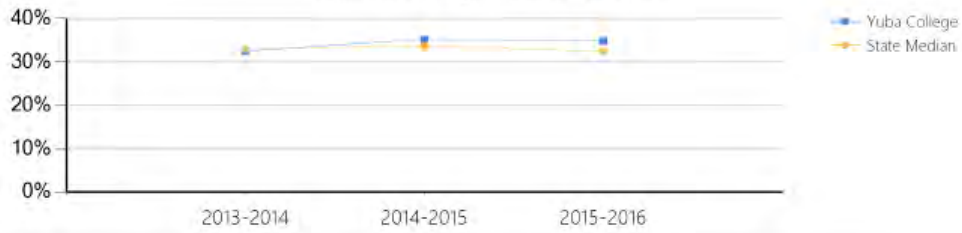
Early Momentum KPIs

	2013-2014	2014-2015	2015-2016
Earned 6+ College Credits in First Term	46% (497)	50% (501)	51% (493)
Earned 15+ College Credits in Year One	32% (350)	35% (350)	35% (333)
Attempted 30+ Credits in Year One	10% (110)	13% (133)	7% (70)

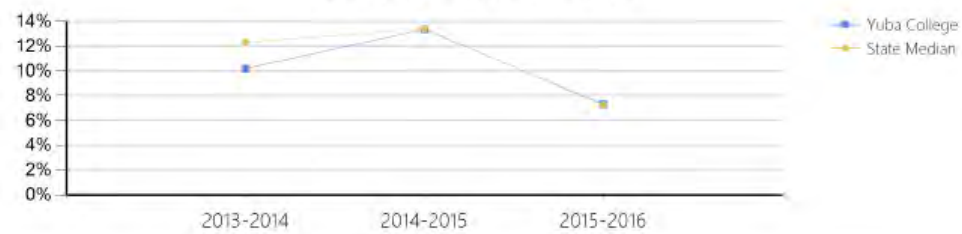
Earned 6+ College Credits in First Term



Earned 15+ College Credits in Year One



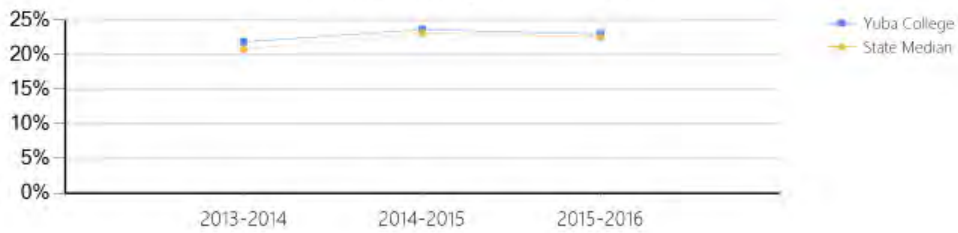
Attempted 30+ Credits in Year One



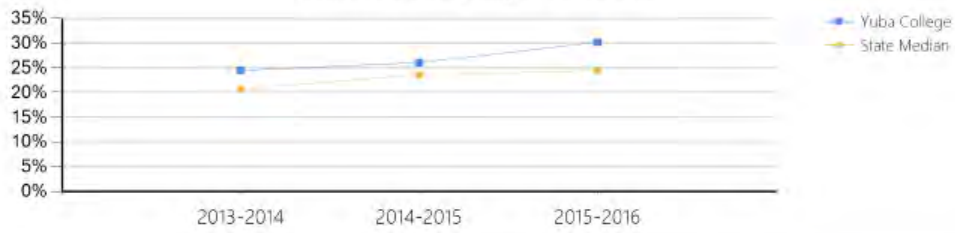
Gateway Course Completion KPIs

	2013-2014	2014-2015	2015-2016
Completed College Math in Year One	22% <small>(236)</small>	24% <small>(235)</small>	23% <small>(220)</small>
Completed College English in Year One	24% <small>(264)</small>	26% <small>(259)</small>	30% <small>(289)</small>
Completed Both College English and Math in Year One	13% <small>(140)</small>	15% <small>(152)</small>	15% <small>(141)</small>

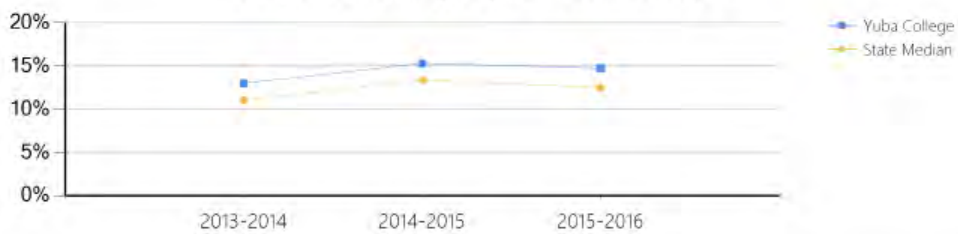
Completed College Math in Year One



Completed College English in Year One



Completed Both College English and Math in Year One



Appendix R: College Goals, Actions, and Performance Outcomes

Yuba College Objectives Educational Master Plan 2017-2020

DISTRICT GOAL 1: Increase student success and maximize the student experience through learner centered programs and services designed to enhance student learning and completion.				
OBJECTIVE 1.1- Connection				
<ul style="list-style-type: none"> * 2017-2018: By June 30, 2018, increase the number of new student enrollments by 2%. * 2018-2019: By June 30, 2019, increase the number of new student enrollments by 2%. * 2019-2020: By June 30, 2020 increase the number of new student enrollments by 2%. 				
ACTIONS	PERFORMANCE OUTCOMES	TIMELINE	FUNDING SOURCE	RESPONSIBLE PARTY
2017-2018 Objective: By June 30, 2018 increase the number of new student enrollments by 2%.				
Develop and implement a plan to increase FAFSA and Dream Act applications. Plan will include strategies such as increased marketing activities, direct communication with students, on-campus workshops, and classroom presentations.	Plan, Completion Data	2017-2020	GF	Director of Financial Aid
Develop and implement a plan to increase the number of first-time students receiving an AEP prize to registration. Plan will include strategies and implementation timelines for activities such as the development of an online module, targeted marketing, and improved data collection and reporting for AEP exemptions.	Plan, Number of AEPs	2017-2020	SSSP	Director of Counseling
Develop and implement a comprehensive and integrated outreach and marketing plan aligning high school outreach activities, parent targeted outreach, CTE activities, peer ambassador in reach and outreach, etc. to increase student enrollments.	Plan, Application data	2017-2019	GF	Dean of Student Success, College Marketing and Promotion Coordinator, & Outreach Committee
2018-2019 Objective: By June 30, 2019 increase the number of new student enrollments by 2%.				
Develop promotional materials and a marketing program to increase the awareness of the benefits of the Associate Degrees for Transfer.	Application and degree data	2018-2019	GF, AFBG, SWF, EQUITY	College Marketing and Promotion Coordinator and Director of Counseling
Evaluate the Quick Reg Program and modify the program as appropriate to improve outcomes.	Student registration	2018-2019	EQUITY	VP and Director of Counseling
2019-2020 Objective: By June 30, 2020 increase the number of new student enrollments by 2%.				
Evaluate the Peer Center/Welcome Center services and scale as appropriate.	Student registration	2019-2020	GF, SSSP	Dean of Student Services
OBJECTIVE 1.2- Entry				
<ul style="list-style-type: none"> * 2017-2018: By June 30, 2018, increase the rate of students completing transfer-level math and English coursework in two years by 2% (IEPI Goal). * 2018-2019: By June 30, 2019, increase the rate of students completing transfer-level math and English coursework in two years by 3% (IEPI Goal). * 2019-2020: By June 30, 2020, increase the rate of students completing transfer-level math and English coursework in two years by 3% (IEPI Goal). 				
ACTIONS	PERFORMANCE OUTCOMES	TIMELINE	FUNDING SOURCE	RESPONSIBLE PARTY
2017-2018 Objective: By June 30, 2018 increase the rate of student completing transfer-level math and English coursework in two years by 2%.				
Send a team of faculty, staff, and administrators to the California Guided Pathways Institutes.	Training, identification of best practices, data analysis, & pilot implementation	2017-2019	IEPI, GF	Dean of Applied Academics
Create a task force of faculty, staff and administrators to establish clear student success goals and identify coordinated and scalable strategies to improve student outcomes. Engage the college community in collaborative discussions around how to improve student success in areas such as number of college credits earned in first term and first year, completion of math and English in student's first year, persistence from term to terms and rates of college level course completion. Create a steering agency for change.	Goals, data, recommendations, plan, & plan	2017-2020	EQUITY, GF, SSSP	President, Vice President, Academic Senate & Guided Pathways Task Force
Implement multiple measures.	Improved placement evidenced by success and retention data	2017-2019	SSSP	Testing and Assessment Coordinator, SAT Workgroup
Develop a dual enrollment program with all local high school districts. Initiate a pilot program during the fall 2018 semester.	MOUs, enrollment data, success and retention data	2017-2019	EQUITY	Dean of Student Success, College Marketing and Promotion Coordinator, & Outreach Committee
Evaluate the effectiveness of embedded ESL tutoring and Embedded Peer Mentors for Accelerated English. Expand the program and continue data evaluation and analysis.	Success and retention data	2017-2018	EQUITY, GF	Dean of STEM, Director of Academic Excellence, & Student Equity Committee
2018-2019 Objective: By June 30, 2019 increase the rate of student completing transfer-level math and English coursework in two years by 3%.				
Evaluate best practices and design and implement a First Year Experience (FYI) program.	Program development, success and retention data	2019-2020	EQUITY	Director of Counseling
2019-2020 Objective: By June 30, 2020 increase the rate of student completing transfer-level math and English coursework in two years by 3%.				
Review best practices, design and execute a summer bridge program.	Program development, success and retention data	2019-2020	EQUITY, GF	Dean of Student Services & Dean of Student Success

OBJECTIVE 1.3– Progress				
<ul style="list-style-type: none"> * 2017-2018: By June 30, 2018, increase the rate of students persisting from term to term by 3%. (Scorecard) * 2018-2019: By June 30, 2019, increase the rate of students persisting from term to term by 3%. (Scorecard) * 2019-2020: By June 30, 2020, increase the rate of students persisting from term to term 3%. (Scorecard) 				
2017-2018 Objectives: By June 30, 2018 increase the rate of students persisting from year 1 to year 2 by 3%.				
Transition early alert to Student Services. Expand the utilization of Early Alert by increasing faculty awareness through Flex workshops, trainings, division presentations, student testimonials, etc.	Utilization rate	2017-2018	EQUITY, SSSP	Dean of Student Services
Implement a curriculum and degree rotational update system.	Currency of curriculum	2017-2018	GF	Curriculum Committee
Update all out of date degrees and certificates.	Currency of degrees & certificates	2017-2019	GF	Curriculum Committee
Implement new catalog development process and interactive, searchable online catalog. Organize College catalog around programs tied to transfer and career pathways.	Online catalog	2017-2019	GF	Vice-President & College Marketing and Promotion Coordinator
2018-2019 Objectives: By June 30, 2019 increase the rate of students persisting from year 1 to year 2 by 3%.				
Expand the Student Ambassador Club to support peer engagement.	Student enrollment and achievement data	2018-2019	EQUITY	Program Coordinator
Implement Degree Audit	Electronic Ed Plans	2018-2019	SSSP	Dean of Student Services
Develop five additional AS-1/AA-1 degrees.	Degrees	2018-2019	GF	Curriculum Committee
Increase student participation in the Parents, Umoja and MESA programs.	Student enrollment and achievement data	2018-2019	EQUITY	Program Coordinator, Equity & SSSP Committee
2019-2020 Objectives: By June 30, 2020 increase the rate of students persisting from year 1 to year 2 by 3%.				
Increase participation in Student Success Symposia	Success and retention data	2019-2020	EQUITY, SSSP	Excellence & Director of Counseling
OBJECTIVE 1.4– Completion				
<ul style="list-style-type: none"> * 2017-2018: By June 30, 2018, increase the rate of students completing certificates, degrees, and are transfer ready by 5%. (IEPI Goal-Overall #12) * 2018-2019: By June 30, 2019, increase the rate of students completing certificates, degrees, and are transfer ready by 5%. (IEPI Goal-Overall #12) * 2019-2020: By June 30, 2020 increase the rate of students completing certificates, degrees and are transfer ready by 5%. (IEPI Goal-Overall #12) 				
2017-2018 Objectives: By June 30, 2018 increase the rate of students completing certificates, degrees, and are transfer ready by 5%.				
Research if students can be automatically awarded degrees and certificates without utilizing the existing petition process and without a negative impact on financial aid options.	Research and recommendation	2017-2018	SSSP	Dean of Student Services
Analyze Transfer Center operations, programs and activities. Research statewide best practices and create Transfer Center Program Plan.	Plan	2017-2018	SSSP, EQUITY	Dean of Student Services, Director of Counseling, & Transfer Counselor
2018-2019 Objectives: By June 30, 2019 increase the rate of students completing certificates, degrees, and are transfer ready by 5%.				
Initiate faculty to faculty and executive level conversations with key transfer institutions to identify ways to improve transfer outcomes.	Transfer rates	2018-2019	GF	President, Vice President, & Academic Senate
Admission and Records will perform degree audits to identify students who have completed degree requirements, but not yet applied for a degree. Students who have departed, but are near completion will also be contacted. Automate degree audit process.	Degrees and certificates	2017-2018	SSSP	Dean of Student Services
2019-2020 Objectives: By June 30, 2020 increase the rate of students completing certificates, degrees, and are transfer ready by 5%.				
Develop a comprehensive internship and job placement program.	Internship and job placement rates.	2017-2020	SWP	Dean of Applied Academics and CWEE Coordinator
DISTRICT GOAL 2: Integrate planning and institutional effectiveness processes with a culture of evidence.				
OBJECTIVE 2.1– Finalize implementation of resource allocation model.				
ACTIONS	PERFORMANCE OUTCOMES	TIMELINE	FUNDING SOURCE	RESPONSIBLE PARTY
Assess effectiveness of one-time allocation process changes and scale for on-going allocations.	Evaluation and Implementation	2017-2019	GF	Planning & Budget Committee
Design and implement a rubric for evaluating one-time allocations.	Implementation	2017-2018	GF	Planning & Budget Committee
Incorporate facilities into resource allocation model process.	Implementation	2017-2018	GF	Planning & Budget Committee
Incorporate staffing into resource allocation model process.	Implementation	2018-2019	GF	Planning & Budget Committee
Develop a process to ensure that categorical funding (BSI, SSSP, SEP, SWP, etc.) aligns with the Educational Master Plan and informs the resource allocation process.	Implementation	2018-2019	GF	Planning & Budget Committee
OBJECTIVE 2.2: Integrate authentic SLO/SAO assessment data into the planning processes.				
Improve assessment practices.	Process development	2017-2018	GF	SLO Committee & Academic Senate
OBJECTIVE 2.3: Build capacity for data infrastructure.				
Coordinate Planning Office and UC and District Technology Committees to identify infrastructure needs.	Plan	2017-2018	GF	Technology Committee
Complete development of dashboards.	Tool	2018-2020	GF	Technology Committee
Coordinate campus wide training on use of data.	Training	2018-2020	GF	Technology Committee

DISTRICT GOAL 3: Strengthen our CORE as a 21st-century, learning-centered organization; employ, develop and sustain highly professional, qualified faculty and staff.				
OBJECTIVE 3.1-By 2020, improve communication and collaboration across the campus and centers as measured by campus survey data.				
Identify a task force charged with creating an actionable plan to address the areas of concern identified in the Gruffalo Noel-Levitz College Employees Satisfaction Survey (CESS), the Survey of Entering Student Engagement (SENSE), and the Community College Survey of Student Engagement. The plan should address how to improve spirit of teamwork and cooperation, communication, and orientation and ongoing training.	Plan	2017-2018	GF	College Council
DISTRICT GOAL 4: Complete multi-college district transition in structure, rules, responsibilities, and processes.				
None				
DISTRICT GOAL 5: Assert regional educational, economic and workforce leadership; prioritize Economic and Workforce Development Programs based on regional, state and national imperatives.				
OBJECTIVE 5.1- By 2020, collaborate with local industry, government organizations, and other educational institutions to explore non-credit pathways aligned with YC credit programs.				
ACTIONS	PERFORMANCE OUTCOMES	TIMELINE	FUNDING SOURCE	RESPONSIBLE PARTY
Create a task force to analyze noncredit offerings and identify areas of possible expansion. Identify pathways to credit offerings evaluating expanded CTE, ESL, contract education, and community education offerings.	Plan	2017-2018	AEFG, SWF	Dean of Arts and Education and Dean of Applied Academics.

Source: Yuba College. Office of Instruction

Actual							Projected														
Profile - Fall Semester 2016							2021					2026					2031				
Marysville Campus Cont.	# of Sec	WSCH	Sec	FTEs	Lec Hrs	Lab Hrs	# of Sec	Lec WSCH	Lab WSCH	Total WSCH	FTEs	# of Sec	Lec WSCH	Lab WSCH	Total WSCH	FTEs	# of Sec	Lec WSCH	Lab WSCH	Total WSCH	FTEs
Public Safety																					
Administration of Justice	28	1,933.1	69.04	64.4	81%	19%	17	1,921.1	450.6	2,371.7	79.1	19	1,835.0	430.4	2,265.5	75.5	20	1,985.3	465.7	2,451.0	81.7
EMT	2	369.0	184.50	12.3	67%	33%	1	267.7	131.8	399.5	13.3	1	289.8	142.7	432.5	14.4	1	313.5	154.4	467.9	15.6
Fire Technology	2	87.0	43.50	2.9	100%	0%	1	94.2	0.0	94.2	3.1	1	102.0	0.0	102.0	3.4	1	110.3	0.0	110.3	3.7
subtotal	32	2,389.1	297.04	79.64	80%	20%	19	2,282.9	582.4	2,865.4	95.5	21	2,226.8	573.2	2,799.9	93.3	22	2,409.1	620.1	3,029.2	101.0
STEM and Social Sciences																					
Anthropology	1	108.0	108.00	3.6	100%	0%	1	116.9	0.0	116.9	3.9	1	126.6	0.0	126.6	4.2	1	130.5	0.0	130.5	4.3
Astronomy	1	93.0	93.00	3.1	100%	0%	1	100.7	0.0	100.7	3.4	1	109.0	0.0	109.0	3.6	1	112.3	0.0	112.3	3.7
Biology	25	4,083.0	163.32	136.1	36%	64%	26	1,591.3	2,829.0	4,420.3	147.3	29	1,722.7	3,062.6	4,785.3	159.5	31	1,834.8	3,261.9	5,096.7	169.9
Chemistry	8	1,428.0	178.50	47.6	55%	65%	7	850.3	1,004.9	1,855.1	61.8	8	920.5	1,087.9	2,008.3	66.9	8	995.9	1,177.0	2,172.8	72.4
Computer Science	3	421.0	140.33	14.0	67%	45%	2	305.4	205.1	510.5	17.0	2	330.6	222.0	552.6	18.4	3	357.7	240.2	597.9	19.9
Ecology	3	204.0	68.00	6.8	100%	33%	2	220.9	72.9	293.7	9.8	2	239.1	78.9	318.0	10.6	2	258.7	85.4	344.0	11.5
Economics	3	186.0	62.00	6.2	100%	0%	2	201.4	0.0	201.4	6.7	2	218.0	0.0	218.0	7.3	2	235.8	0.0	235.8	7.9
Geography	3	165.0	55.00	5.5	100%	0%	2	178.6	0.0	178.6	6.0	2	193.4	0.0	193.4	6.4	3	209.2	0.0	209.2	7.0
History	10	1,203.0	120.30	40.1	100%	0%	11	1,302.4	0.0	1,302.4	43.4	12	1,409.9	0.0	1,409.9	47.0	13	1,525.4	0.0	1,525.4	50.8
Humanities	6	216.0	36.00	7.2	100%	0%	3	233.8	0.0	233.8	7.8	3	253.2	0.0	253.2	8.4	3	273.9	0.0	273.9	9.1
Math	41	5,544.8	135.24	184.8	100%	0%	40	6,003.0	0.0	6,003.0	200.1	43	6,498.7	0.0	6,498.7	216.6	46	7,031.1	0.0	7,031.1	234.4
Philosophy	4	219.0	54.75	7.3	100%	0%	2	237.1	0.0	237.1	7.9	2	256.7	0.0	256.7	8.6	2	277.7	0.0	277.7	9.3
Physical Sciences	3	228.0	76.00	7.6	100%	0%	3	168.0	0.0	168.0	5.6	3	267.0	0.0	267.0	8.9	3	289.1	0.0	289.1	9.6
Physics	4	207.0	51.75	6.9	40%	60%	2	89.6	134.5	224.1	7.5	2	97.0	145.6	242.6	8.1	2	105.0	220.5	325.5	10.8
Political Science	5	543.0	108.60	18.1	100%	0%	4	587.9	0.0	587.9	19.6	5	636.4	0.0	636.4	21.2	5	688.5	0.0	688.5	23.0
Psychology	8	1,101.0	137.63	36.7	100%	0%	10	1,191.9	0.0	1,191.9	39.7	11	1,290.4	0.0	1,290.4	43.0	12	1,396.1	0.0	1,396.1	46.5
Sociology	5	450.0	90.00	15.0	100%	0%	4	487.2	0.0	487.2	16.2	4	527.4	0.0	527.4	17.6	5	570.6	0.0	570.6	19.0
Statistics	5	945.0	189.00	31.5	62%	38%	5	634.3	388.8	1,023.1	34.1	5	686.7	420.9	1,107.5	36.9	6	742.9	455.3	1,198.3	39.9
subtotal	138	17,344.9	125.69	578.16	70%	30%	127	14,500.6	4,635.0	19,135.6	637.9	137	15,783.2	5,017.8	20,801.0	693.4	148	17,035.2	5,440.3	22,475.4	749.2
Student Services																					
Counseling	15	1,006.1	67.07	33.5	81%	19%	10	882.2	206.9	1,089.1	36.3	11	955.0	224.0	1,179.0	39.3	12	1,033.2	242.4	1,275.6	42.5
subtotal	15	1,006.1	67.07	33.5	81%	19%	10	882.2	206.9	1,089.1	36.3	11	955.0	224.0	1,179.0	39.3	12	1,033.2	242.4	1,275.6	42.5
Marysville Campus Total	473	42,758.4	90.40	1,425.28	58%	42%	395	30,231.0	12,681.0	42,912.0	1,430.4	465	33,704.7	16,139.2	50,137.7	1,671.3	492	36,370.5	17,350.5	53,721.0	1,790.7

Source: Cambridge West Partnership, LLC

Actual							Projected																
Profile - Fall Semester 2016							2021					2026					2031						
	# of Sec	WSCH	Sec	FTES	Lec Hrs	Lab Hrs	# of Sec	Lec WSCH	Lab WSCH	Total WSCH	FTES	# of Sec	Lec WSCH	Lab WSCH	Total WSCH	FTES	# of Sec	Lec WSCH	Lab WSCH	Total WSCH	FTES		
Marysville City																							
STEM and Social Sciences																							
Computer Science	1	66.0	66.00	2.2	48%	52%	1	34.3	37.2	71.5	2.4	1	37.1	40.2	77.4	2.6	1	40.2	43.5	83.7	2.8	0.0	
Student Services																							
Counseling	1	72.0	72.00	2.4	0%	100%	1	0.0	78.0	78.0	2.6	1	0.0	84.4	84.4	2.8	1	0.0	91.3	91.3	3.0		
Marysville City Total	2	138.0	69.00	4.60	44%	56%	2	34.3	115.1	149.4	5.0	2	37.1	124.6	161.7	5.4	2	40.2	134.8	166.7	5.6		
Yuba City																							
Applied Academics																							
Cosmetology	24	1,495.9	62.33	49.9	18%	82%	24	269.3	1,226.7	1,495.9	49.9	24	269.3	1,226.7	1,495.9	49.9	24	269.3	1,226.7	1,495.9	49.9		
Athletics and Health																							
Physical Education	1	72.0	72.00	2.4	25%	75%	1	19.5	58.5	78.0	2.6	1	21.1	63.3	84.4	2.8	1	21.7	65.2	87.0	2.9		
Yuba City Total	25	1,567.9	62.72	52.3	18%	82%	25	288.8	1,285.1	1,573.9	52.5	25	290.4	1,289.9	1,580.3	52.7	25	291.0	1,291.9	1,582.9	52.8		
Yuba College Distance Education																							
Applied Academics																							
Agriculture	2	87.0	43.50	2.9	100%	0%	1	94.2	0.0	94.2	3.1	1	102.0	0.0	102.0	3.4	1	110.3	0.0	110.3	3.7		
Veterinary Tech	8	600.0	75.00	20.0	94%	6%	6	610.6	39.0	649.6	21.7	5	661.0	42.2	703.2	23.4	7	715.2	45.6	760.8	25.4		
Arts and Education																							
Early Childhood Education	1	69.0	69.00	2.3	100%	0%	1	74.7	0.0	74.7	2.5	1	80.9	0.0	80.9	2.7	1	87.5	0.0	87.5	2.9		
English	2	90.0	45.00	3.0	100%	0%	1	97.4	0.0	97.4	3.2	2	105.5	0.0	105.5	3.5	2	114.1	0.0	114.1	3.8		
Mass Communications	1	3.0	3.00	0.1	100%	0%	1	3.2	0.0	3.2	0.1	1	3.5	0.0	3.5	0.1	1	3.8	0.0	3.8	0.1		
Athletics and Health																							
Health	2	117.0	58.50	3.9	100%	0%	1	126.7	0.0	126.7	4.2	1	137.1	0.0	137.1	4.6	1	148.4	0.0	148.4	4.9		
Nursing and Allied Health																							
Nursing & Allied Health	6	662.0	110.33	22.1	100%	0%	5	716.7	0.0	716.7	23.9	5	775.9	0.0	775.9	25.9	5	839.4	0.0	839.4	28.0		
STEM and Social Sciences																							
Anthropology	1	72.0	72.00	2.4	100%	0%	1	77.9	0.0	77.9	2.6	1	84.4	0.0	84.4	2.8	1	91.3	0.0	91.3	3.0		
Math	2	167.0	83.50	5.6	100%	0%	1	180.8	0.0	180.8	6.0	1	195.7	0.0	195.7	6.5	1	211.8	0.0	211.8	7.1		
Political Science	1	18.0	18.00	0.6	100%	0%	1	19.5	0.0	19.5	0.6	1	21.1	0.0	21.1	0.7	1	22.8	0.0	22.8	0.8		
Sociology	1	120.0	120.00	4.0	100%	0%	1	129.9	0.0	129.9	4.3	1	140.6	0.0	140.6	4.7	1	152.2	0.0	152.2	5.1		
Yuba College Distance Ed. Total	27	2,005.0	74.26	66.83	98%	2%	20	2131.6	38.97	2,170.6	72.4	20	2,307.7	42.2	2,349.9	78.3	22	2,496.7	45.6	2,542.3	84.7		

Source: Cambridge West Partnership, LLC

Actual							Projected															
Profile - Fall Semester 2016							2021					2025					2031					
	# of Sec	WSCH	Sec	FTEs	Lec Hrs	Lab Hrs	# of Sec	Lec WSCH	Lab WSCH	Total WSCH	FTEs	# of Sec	Lec WSCH	Lab WSCH	Total WSCH	FTEs	# of Sec	Lec WSCH	Lab WSCH	Total WSCH	FTEs	
Beale AFB																						
<i>Applied Academics</i>																						
<i>Bus. Computer Application</i>	1	32.0	32.00	1.1	40%	60%	1	13.9	20.8	34.6	1.2	1	15.0	22.5	37.5	1.3	1	16.2	24.3	40.58	1.4	0.0
<i>Arts and Education</i>																						
<i>English</i>	1	65.0	65.00	2.2	100%	0%	1	70.4	0.0	70.4	2.3	1	76.2	0.0	76.2	2.5	1	82.4	0.0	82.42	2.7	0.0
<i>Speech</i>	2	95.0	47.50	3.2	100%	0%	1	102.9	0.0	102.9	3.4	1	111.3	0.0	111.3	3.7	1	120.5	0.0	120.46	4.0	0.0
<i>Public Safety</i>																						
<i>LMI</i>	1	81.0	81.00	2.7	100%	0%	1	87.7	0.0	87.7	2.9	1	94.9	0.0	94.9	3.2	1	102.7	0.0	102.71	3.4	0.0
<i>STEM and Social Sciences</i>																						
<i>Economics</i>	2	128.0	64.00	4.3	100%	0%	1	138.6	0.0	138.6	4.6	2	150.0	0.0	150.0	5.0	2	162.3	0.0	162.30	5.4	0.0
<i>History</i>	2	101.0	50.50	3.4	100%	0%	1	109.3	0.0	109.3	3.6	1	118.4	0.0	118.4	3.9	1	128.1	0.0	128.07	4.3	0.0
<i>Humanities</i>	1	26.0	26.00	0.9	100%	0%	1	28.1	0.0	28.1	0.9	1	30.5	0.0	30.5	1.0	1	33.0	0.0	32.97	1.1	0.0
<i>Math</i>	1	39.0	39.00	1.3	100%	0%	1	42.2	0.0	42.2	1.4	1	45.7	0.0	45.7	1.5	1	49.5	0.0	49.45	1.6	0.0
<i>Psychology</i>	2	64.0	32.00	2.1	100%	0%	1	69.3	0.0	69.3	2.3	1	75.0	0.0	75.0	2.5	1	81.2	0.0	81.15	2.7	0.0
Beale AFB Total	13	631.0	48.54	21.03	98%	2%	9	662.3	20.78	683.1	22.8	10	717.0	22.5	739.5	24.7	10	775.9	24.3	800.1	26.7	0.0
Lake County Campus																						
<i>Applied Academics</i>																						
<i>Culinary</i>	6	468.0	78.00	15.6	19%	81%	4	96.3	410.4	506.7	16.9	5	104.2	444.3	548.5	18.3	5	112.8	480.7	593.5	19.8	0.0
<i>Office Administration</i>	1	21.0	21.00	0.7	100%	0%	1	22.7	0.0	22.7	0.8	1	24.6	0.0	24.6	0.8	1	26.6	0.0	26.6	0.9	0.0
<i>Welding</i>	2	138.0	69.00	4.6	40%	60%	1	59.8	89.6	149.4	5.0	1	64.7	97.0	161.7	5.4	1	70.0	105.0	175.0	5.8	0.0
<i>Arts and Education</i>																						
<i>Learning Assistance</i>	3	121.0	40.33	4.0	10%	90%	2	13.1	117.9	131.0	4.4	3	14.2	127.6	141.8	4.7	3	15.3	138.1	153.4	5.1	0.0
Lake County Campus Total	12	748.0	62.33	24.9	22%	78%	8	191.9	617.9	809.8	27.0	10	207.7	669.0	876.7	29.2	10	224.7	723.8	948.5	31.6	0.0
LCC Distance Education																						
<i>Arts and Education</i>																						
<i>Early Childhood Education</i>	1	195.0	195.0	6.5	100%	0%	1	211.10	0.00	211.1	7.0	1	228.5	0.0	228.5	7.6	1	247.3	0.0	247.3	8.2	0.0
Lake County Distance Ed. Total	1	195.0	195.0	6.5	100%	0%	1	211.1	0.00	211.1	7.0	1	228.5	0.0	228.5	7.6	1	247.3	0.0	247.3	8.2	0.0

Source: Cambridge West Partnership, LLC

Actual							Projected															
Profile - Fall Semester 2016							2021				2026				2031							
Woodland Community College	# of Sec	WSCH		FTES	Lec Hrs	Lab Hrs	# of Sec	Lec WSCH	Lab WSCH	Total		# of Sec	Lec WSCH	Lab WSCH	Total WSCH	FTES	# of Sec	Lec WSCH	Lab WSCH	Total		
		WSCH	Sec							WSCH	FTES									WSCH	FTES	
<i>Nursing & Allied Health</i>																						
<i>Nursing</i>	1	18.0	18.0	0.60	100%	0%	1	19.49	0.00	19.5	0.6	1	21.1	0.0	21.1	0.7	1	22.8	0.0	22.8	0.8	
Woodland CC Total	1	18.0	18.0	0.60	100%	0%	1	19.49	0.00	19.5	0.6	1	21.1	0.0	21.1	0.7	1	22.8	0.0	22.8	0.8	
Yuba College Grand Total	754	64,692.3	85.8	2,156.4			617	50,245.2	16,212.0	66,534.1	2217.8	702	55,349.3	19,860.6	75,490.6	2,516.4	747	59,926.9	21,201.0	81,119.4	2,704.0	

Source: Cambridge West Partnership, LLC

Appendix Z: Space Projection Details (excludes community and distance education located offerings)

MARYSVILLE CAMPUS	BASELINE								PROJECTED							
	2016				2021				2026				2031			
Divisions/Disciplines	# of SEC	Lec ASF	Lab ASF	Total ASF	# of SEC	Lec ASF	Lab ASF	Total ASF	# of SEC	Lec ASF	Lab ASF	Total ASF	# of SEC	Lec ASF	Lab ASF	Total ASF
Applied Academics																
Accounting	8	291	296	587	6	316	317	633	7	343	343	685	7	353	353	706
Automobile																0
Bus/Computer Applications	5	51	148	199	2	55	161	217	2	60	175	234	2	61	180	242
Culinary Arts	4	44	865	909	3	48	932	981	3	52	1,010	1,063	3	54	1,041	1,095
Cal Workforce	1	0	0	0	1	0	0	0	1	0	0	0	1	0	0	0
Engineering																0
General Business Management	3	80	0	80	2	86	2	88	2	93	3	96	2	96	3	99
Internship	1	0	4	4	1	0	4	4	1	0	5	5	1	0	5	5
Manufacturing																0
Office Administration	4	38	110	148	2	42	118	160	2	45	128	173	2	47	132	179
Veterinary Tech	5	73	1,009	1,082	4	79	1,089	1,168	4	86	1,180	1,266	4	88	1,216	1,304
Welding	8	125	1,193	1,318	6	135	1,292	1,427	6	146	1,399	1,545	6	151	1,442	1,592
Temp Lecture (2)																0
Total	39	702	3,626	4,328	27	762	3,915	4,677	28	825	4,241	5,066	28	850	4,371	5,222
Arts & Education																
Art	10	129	1,828	1,956	9	141	1,969	2,110	9	153	2,132	2,284	10	157	2,197	2,355
Early Childhood Education	15	311	1,471	1,782	12	334	1,608	1,942	13	361	1,741	2,103	14	373	1,795	2,167
English	51	2,255	0	2,255	50	2,442	0	2,442	54	2,643	0	2,643	56	2,724	0	2,724
ESL	19	197	86	284	12	215	88	303	13	233	95	328	13	240	98	338
French				0				0				0				0
Learning Assistance	6	21	504	526	6	23	543	567	6	25	588	613	6	26	606	632
Mass Communication	2	14	70	85	1	16	76	91	1	17	82	99	1	17	85	102
Music	11	121	962	1,084	7	3	1,036	1,039	8	4	1,121	1,125	8	4	1,156	1,160
Foreign and Sign Language	3	142	0	142	2	154	0	154	2	166	0	166	3	171	0	171
Spanish (Lang Arts) 2 Sec, 1 Temp	6	270	0	270	5	292	0	292	5	317	0	317	5	326	0	326
Speech	9	262	276	538	8	283	299	582	9	306	324	630	9	316	334	650
Theater Arts	2	38	826	864	3	41	893	934	3	45	966	1,011	3	46	996	1,042
total	134	3,760	6,025	9,785	115	3,943	6,512	10,455	123	4,269	7,050	11,319	128	4,401	7,266	11,667
Athletics & Health																
Health	10	310	0	310	8	335	0	335	9	363	0	363	9	374	0	374
Physical Education	47	440	7,492	7,932	36	485	8,056	8,541	39	525	8,721	9,246	41	541	8,989	9,530
total	57	750	7,492	8,242	44	820	8,056	8,876	48	888	8,721	9,609	50	915	8,989	9,904

Source: Cambridge West Partnership, LLC



MARYSVILLE CAMPUS Divisions/Disciplines	BASELINE								PROJECTED							
	2016				2021				2026				2031			
	# of SEC	Lec ASF	Lab ASF	Total ASF	# of SEC	Lec ASF	Lab ASF	Total ASF	# of SEC	Lec ASF	Lab ASF	Total ASF	# of SEC	Lec ASF	Lab ASF	Total ASF
Nursing & Allied Health																
Human Services	9	108	105	213	5	194	193	386	5	126	125	251	5	130	129	259
Nursing	29	308	4,352	4,660	26	330	3,235	3,565	28	357	3,502	3,859	29	368	3,608	3,978
Psychiatric Technician	4	60	0	60	1	65	228	292	1	70	247	316	1	72	254	326
Radiology Technician	6	106	722	828	4	115	1,302	1,417	5	125	1,410	1,534	5	128	1,453	1,581
total	48	582	5,178	5,760	36	704	4,957	5,660	39	678	5,283	5,960	40	698	5,445	6,144
Public Safety																
Administration of Justice	28	745	767	1,512	17	909	964	1,873	19	868	921	1,789	19	895	949	1,844
EMT	2	116	263	380	1	127	282	409	1	137	305	443	1	141	315	456
Fire Technology	2	41	0	41	1	45	0	45	1	48	0	48	1	50	0	50
Gen Lect (1)																
total	32	902	1,030	1,932	19	1,080	1,246	2,326	21	1,053	1,227	2,280	21	1,086	1,264	2,350
STEM AND Social Sciences																
Anthropology	1	51	0	51	1	55	0	55	1	60	0	60	1	62	0	62
Astronomy	1	44	0	44	1	48	0	48	1	52	0	52	1	53	0	53
Biology	25	697	6,080	6,777	26	753	6,592	7,344	29	815	7,136	7,951	30	840	7,355	8,195
Chemistry	8	235	2,384	2,628	7	402	2,583	2,985	8	435	2,796	3,231	8	449	2,862	3,331
Computer Science	3	110	322	432	2	144	351	495	2	156	380	536	2	161	391	553
Ecology (1 Temp)	3	64	158	223	2	105	170	274	2	113	184	297	2	117	190	306
Economics	3	88	0	88	2	95	0	95	2	103	0	103	2	106	0	106
Geography	3	78	0	78	2	85	0	85	2	92	0	92	3	94	0	94
History	10	589	0	589	11	616	0	616	12	667	0	667	12	687	0	687
Humanities	6	102	0	102	3	111	0	111	3	120	0	120	3	123	0	123
Math	41	2,623	0	2,623	40	2,839	0	2,839	43	3,074	0	3,074	44	3,168	0	3,168
Philosophy	4	104	0	104	2	112	0	112	2	121	0	121	2	125	0	125
Physical Science				0				0				0				0
Physics	4	39	319	358	2	42	346	388	2	46	374	420	2	47	386	433
Political Science	5	257	0	257	4	278	0	278	5	301	0	301	5	310	0	310
Psychology	8	521	0	521	10	564	0	564	11	610	0	610	11	629	0	629
Sociology	5	213	0	213	4	230	0	230	4	250	0	250	5	257	0	257
Statistics	5	277	539	816	5	300	583	883	5	325	631	956	6	335	651	986
total	135	6,072	9,811	15,883	124	6,779	10,623	17,402	134	7,339	11,501	18,840	139	7,565	11,854	19,419
Student Services																
Counseling	15	476	0	476	10	417	0	417	11	452	0	452	11	466	0	466
total	15	476	0	476	10	417	0	417	11	452	0	452	11	466	0	466
Marysville Campus Total *	460	13,245	33,162	46,407	375	14,505	35,310	49,815	404	15,504	38,022	53,526	417	15,980	39,190	55,170
* Lab short Fire Tower @ 3,900 ASF																

Source: Cambridge West Partnership, LLC



SUTTER COUNTY CENTER Divisions/Disciplines	BASELINE								PROJECTED							
	2016				2021				2026				2031			
	# of SEC	Lec ASF	Lab ASF	Total ASF	# of SEC	Lec ASF	Lab ASF	Total ASF	# of SEC	Lec ASF	Lab ASF	Total ASF	# of SEC	Lec ASF	Lab ASF	Total ASF
Applied Academics																
Accounting	4	129	44	173	3	140	47	187	3	152	51	202	3	156	52	208
BusComputer Application	2	38	81	119	1	41	88	129	1	45	95	140	1	46	98	144
General Bus Management	2	77	0	77	2	84	0	84	2	90	0	90	2	93	0	93
Office Administration	1	7	27	34	1	7	29	36	1	8	32	39	1	80	33	113
total	9	251	151	402	7	272	164	436	7	294	177	472	7	375	183	558
Arts & Education																
Art	2	61	0	61	1	66	0	66	1	72	0	72	2	74	0	74
Early Childhood Education	2	85	0	85	2	92	0	92	2	100	0	100	2	103	0	103
English	24	1,024	0	1,024	23	1,109	0	1,109	25	1,200	0	1,200	26	1,237	0	1,237
ESL	4	33	0	33	2	36	0	36	2	39	0	39	2	40	0	40
Music	2	67	0	67	1	72	0	72	1	78	0	78	1	81	0	81
Sign Language	3	140	0	140	3	152	0	152	3	164	0	164	3	189	0	189
Spanish	2	89	0	89	1	96	0	96	1	104	0	104	1	107	0	107
Speech	6	195	0	195	5	211	0	211	5	228	0	228	6	235	0	235
total	45	1,694	0	1,694	38	1,834	0	1,834	40	1,985	0	1,985	43	2,066	0	2,066
Athletics and Health																
Health	4	120	451	570	4	129	492	621	5	139	532	672	5	144	549	692
Physical Education	2	8	171	179	1	9	185	194	1	10	200	210	1	10	207	217
total	6	128	621	749	5	138	677	815	6	149	733	882	6	154	755	909
Nursing and Allied Health																
Human Services	1	48	0	48	1	52	0	52	1	57	0	57	1	58	0	58
total	1	48	0	48	1	52	0	52	1	57	0	57	1	58	0	58

Source: Cambridge West Partnership, LLC

SUTTER COUNTY CENTER Divisions/Disciplines	BASELINE								PROJECTED							
	2016				2021				2026				2031			
	# of SEC	Lec ASF	Lab ASF	Total ASF	# of SEC	Lec ASF	Lab ASF	Total ASF	# of SEC	Lec ASF	Lab ASF	Total ASF	# of SEC	Lec ASF	Lab ASF	Total ASF
STEM and Social Science																
Anthropology	2	65	0	65	1	71	0	71	1	77	0	77	1	79	0	79
Astronomy	1	13	0	13	1	14	0	14	1	15	0	15	1	15	0	15
Biology	6	164	673	836	5	179	721	900	5	194	780	974	5	200	804	1,004
Chemistry	1	44	0	44	1	48	0	48	1	52	0	52	1	53	0	53
Ecology	1	20	0	20	1	22	0	22	1	23	0	23	1	24	0	24
Economics	2	43	0	43	1	46	0	46	1	50	0	50	1	51	0	51
Geography	1	41	0	41	1	45	0	45	1	48	0	48	1	50	0	50
Geology	1	18	0	18	1	20	0	20	1	22	0	22	1	22	0	22
History	6	184	0	184	3	199	0	199	3	216	0	216	4	222	0	222
Humanities	2	17	0	17	1	18	0	18	1	20	0	20	1	21	0	21
Math	16	1,011	0	1,011	15	1,094	0	1,094	15	1,185	0	1,185	16	1,221	0	1,221
Philosophy	3	87	0	87	2	94	0	94	2	101	0	101	2	105	0	105
Political Science	3	64	0	64	1	69	0	69	1	75	0	75	1	77	0	77
Psychology	7	389	0	389	6	421	0	421	6	456	0	456	7	470	0	470
Sociology	1	74	0	74	1	80	0	80	1	87	0	87	1	89	0	89
Statistics	4	103	176	279	2	112	190	302	2	121	206	327	3	124	213	337
total	57	2,336	848	3,184	43	2,530	911	3,441	43	2,739	986	3,725	47	2,823	1,017	3,840
Student Services																
Counseling	4	148	0	148	3	160	0	160	3	173	0	173	3	178	0	178
total	4	148	0	148	3	160	0	160	3	173	0	173	3	178	0	178
SUTTER COUNTY CENTER TOTAL	122	4,605	1,621	6,226	97	4,986	1,752	6,737	100	5,397	1,896	7,294	107	5,655	1,955	7,610
Grand Total	582	17,849	34,783	52,632	472	19,491	37,061	56,552	504	20,901	39,918	60,820	524	21,635	41,144	62,780

Source: Cambridge West Partnership, LLC