



Articulation Concepts

Curriculum Committee Training, Sept 18, 2020

Presented by: Lore Dobusch



Topics to be covered:

- ▶ CSU Transferability
- ▶ CSU General Education-Breadth (CSU GE-B)
- ▶ UC Transferability (UC TCA)
- ▶ Intersegmental General Education Transfer Curriculum (IGETC)
- ▶ Course to course articulation
- ▶ Major articulation
- ▶ ASSIST
- ▶ Transfer model curriculum (TMC) for Associate Degrees for Transfer (ADT)
- ▶ C-ID
- ▶ Articulation timelines




Pre-Assessment: CSU, CSU GE-B, and UC Questions

- ▶ What course numbers at Yuba College are designated for CSU Transferable courses?
- ▶ What is an example of a CSU transferable course in your department or division?
- ▶ How many areas are in the CSU General Education-Breadth?
- ▶ Is Foreign Language a specific requirement of the CSU GE-B?
- ▶ NOT all CSU transferable courses are UC transferable. What is an example of a course that transfers to CSU but not UC? Where can you find this information?



CSU Transferability

- ▶ CSU Executive Order 167 authorizes California Community Colleges to identify courses that are baccalaureate level and appropriate for transfer to the CSU. This articulation agreement is commonly known as the Baccalaureate List or the “Bacc List.”
- ▶ Considerations Involved in Determining What Constitutes a Baccalaureate Level Course (November 7, 1986)



CSU Course Expectations:

(1) The course is presented in a manner that requires of students:

a. a level of intellect, skill, prior knowledge, and maturity consistent with entry-level collegiate expectations and the stated prerequisite(s), if any for that course;

b. learning skills and a vocabulary necessary to master the subject matter of a baccalaureate level course;

c. the capacity to think critically and to understand and apply concepts.

(2) The course:

a. treats subject matter with an intensity and pace that establishes an expectation for significantly greater learner independence than that required at the secondary level;

b. requires the student to continue development of communication skills appropriate for higher education.

CSU Transferability

(3) Coursework that:

- a. enhances understanding of analytical, intellectual, scientific, or cultural concepts and traditions generally shall be considered baccalaureate level.
- b. Enhances understanding of occupational and professional fields usually requiring experience in higher education a prerequisite to employment if it **includes attention to appropriate theories and concepts.**
- c. provides instruction in occupational fields not usually requiring experience in higher education as prerequisite to such field if the primary emphasis is upon **understanding the theories and concepts** that underlie practice rather than only upon the development of technical skills required for immediate employment.
- d. Is remedial or college preparatory shall not be considered baccalaureate level.

CSU Transferability continued:

Pedagogy Employed:

- There shall be opportunity for student-faculty interaction of a kind and variety commensurate with achievement of course objectives.
- The method of evaluation of student performance in courses shall discriminate among levels of attainment as appropriate to both entry and expectations.



CSU General Education-Breadth

- ▶ Criteria is established by CSU; Currently 5 Areas totally a minimum of 39 units; recently approved a Race and Ethnicity requirement which may become a sixth area (but reducing the units in another area to keep the total at 39).
- ▶ CCC submits courses in December that “meet” criteria for review for next academic year’s CSU GE-B.
- ▶ CSU/CCC faculty group reviews courses and approves or denies.
- ▶ CCC is notified usually in April about courses approved/denied for upcoming academic year.
- ▶ Courses are only valid for the year in which they are approved taken at the college in which they are approved.



UC Transferable Courses

- ▶ The University of California has established criteria for course transferability in specific discipline areas. The criteria includes types of courses appropriate for UC transferability and minimum required prerequisites, as well as other factors influencing transferability.
- ▶ The basic principles used in determining the transferability of CCC courses are:
 - The course should be comparable to one offered at the lower division level on any of the UC campuses in scope, level, and prerequisite.
 - If the course is not comparable to any offered at UC, it must be appropriate for a university degree in terms of its purpose, scope and depth.

Courses listed as transferable are accepted at the point of admission by all UC campuses for unit credit in partial satisfaction of the degree requirements of the University.



UC Transferable Courses continued:

General Information:

- Course outlines must be current (not more than five years old).
- New and Revised course submissions must be formally approved by the CCC curriculum committee. –Draft outlines cannot be accepted.

Textbooks:

- Main text must be dated within 7 years. If there is a specific reason why it is not dated within 7 years, an explanation in the outline is required.
- All textbooks should be beyond the 12th grade reading level and at the appropriate college level.
- Textbooks and supplemental material should relate directly to the content of the course outline.



UC Transferable Courses continued:

Literature Courses:

- Must include a representative reading list.

Field Courses:

- Prerequisite/corequisite of an introductory course in the related discipline is required.

Lab Courses:

- Lab manual is required.
- Prerequisite/corequisite of a corresponding lecture course is required.
- Advisory prerequisite/corequisite courses cannot be considered.



Pre-Assessment: IGETC and Articulation Questions

- ▶ Is IGETC required for admission to UC?
- ▶ What is required on IGETC for CSU but not for UC?
- ▶ Are there any differences in grade requirements for IGETC compared to CSU GE-B?
- ▶ What is the difference between course to course articulation and major articulation?



IGETC

- ▶ The Intersegmental General Education Transfer Curriculum (IGETC) was developed in 1991 to simplify transfer for California community college students.
- ▶ It is a comprehensive pattern of courses that prospective transfer students from the California Community Colleges may complete to satisfy lower division general education requirements at both the University of California and the California State University.
- ▶ Accepted at most HBCU's and many CA private and out of state colleges/universities.



IGETC continued:

- ▶ All courses proposed for IGETC must be transferable to both the CSU and the UC (i.e., those listed on both the Bacc List and the UC Transferable Course Agreement).
- ▶ Courses must have a unit value of at least three semester or four quarter units to be considered for IGETC.
- ▶ The deadline for submitting proposed IGETC updates for the following academic year is typically in mid-December.
- ▶ Decisions are usually out in April for the upcoming academic year.
- ▶ Courses are only valid for the year in which they are approved taken at the college in which they are approved.
- ▶ IGETC has two patterns on it-CSU and UC (CSU requires Oral Communication; UC requires Language Other than English)



Course to Course Articulation

- ▶ Course-to-course articulation agreements identify individual courses or sequences of courses at a sending institution that are comparable to, or are “acceptable in lieu of” a corresponding course or sequence of courses at a receiving institution.
- ▶ The purpose of these agreements is to determine if a particular course at a sending institution is comparable to or “acceptable in lieu of” a corresponding course at a particular campus of the University.
- ▶ Courses identified under a course-to-course agreement represent the spectrum of lower division courses offered within one department on a four-year campus, and include courses that may be applied as lower division major, general education, or elective units for a degree.



Major Articulation



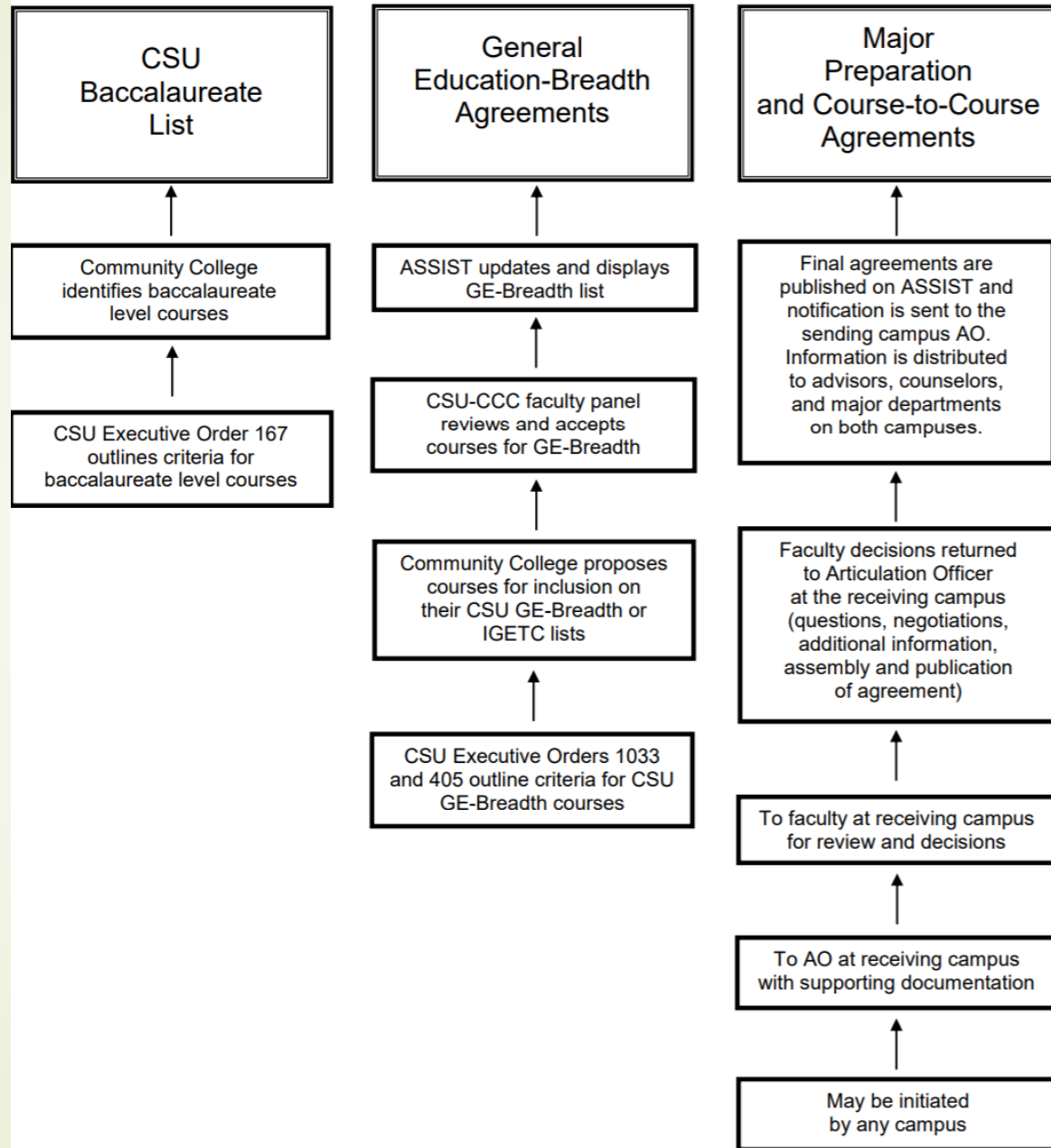
- ▶ These agreements specify courses at a sending institution that fulfill lower division requirements for a specific major at a receiving institution.
- ▶ Catalog descriptions, official course outlines of record, baccalaureate lists, and recommendations from the discipline-specific faculty curriculum review projects (e.g. Associate Degrees for Transfer (to the CSU) and UC Streamlining) may be used in the development of lower division major preparation articulation agreements.
- ▶ In addition, unique or supplemental major requirements may be included on agreements such as: pre-major requirements, supplementary admission requirements for selected majors, and/or information pertinent to admission in impacted or over-subscribed majors.



Course and Major Articulation

- ▶ Articulation agreements are typically valid for a specific academic year.
- ▶ New and/or inactivated courses as well as transferable courses with substantive changes must be reported to the receiving institutions.
 - ▶ Substantive changes include, but are not limited to:
 - ▶ Changes in course prerequisites or corequisites
 - ▶ Decrease in units
 - ▶ Lab unit or content changes
 - ▶ Substantive additions or deletions to course content or expected objectives/outcomes

Diagram 2: General Model of CSU Articulation Process





ASSIST

- ▶ ASSIST (**A**rticulation **S**ystem **S**timulating **I**nterinstitutional **S**tudent **T**ransfer) is the official repository of articulation for California's public colleges and universities providing the most accurate and up-to-date information available about student transfer in California. ASSIST is a student-transfer information system that displays reports of how course credits earned at one California Community College can be applied when transferred to a California State University or University of California campus.

Includes:

- ▶ CSU Transferable courses (BACC list)
- ▶ UC TCA including UC admissions eligibility courses
- ▶ CSU GE-B
- ▶ CSU US History, Constitution and American Ideals
- ▶ IGETC
- ▶ Course to course articulation
- ▶ Major articulation
- ▶ Campus specific general education articulation

<https://assist.org/>



Pre-Assessment: Associate Degree for Transfer Questions

- ▶ What does the Associate Degree for Transfer guarantee students?
- ▶ What are three of the Associate Degree for Transfer programs available at Yuba College?



Associate Degree for Transfer (Transfer Model Curriculum)


- ▶ In response to Senate Bill 1440 (Padilla, 2010), the Academic Senates for California Community Colleges and California State University decided to develop a faculty-led, state-wide, concerted effort to identify the course content for new **associate degrees for transfer (ADT's)**, which simultaneously award students an associate degree and prepare them for special benefits/guarantees upon transfer to CSU.
- ▶ ADT curriculum is called Transfer Model Curriculum. Found on c-id.net website.
- ▶ Faculty from CSU and CCC determine the TMC. Reviewed (and updated if needed) every five years. Much of the TMC includes C-ID courses.
- ▶ Community colleges develop ADT's from TMC.
- ▶ ADT's guarantee admission in a similar major at a CSU not necessarily the one of student's choice.
- ▶ Guarantees students only 60 units remaining to complete bachelor's degree.

Yuba College's ADT's:

<https://www2.calstate.edu/apply/transfer/Pages/associate-degree-for-transfer-major-and-campus-search.aspx>

Yuba College offers the following Associate Degrees for Transfer:

- Administration of Justice (A.S.-T)
- Biology (A.S.-T)
- Business Administration (A.S.-T)
- Chemistry (A.S.-T)
- Communication Studies (A.A.-T)
- Computer Science (A.S.-T)
- Early Childhood Education (A.S.-T)
- English (A.A.-T)
- Geology (A.S.-T)
- History (A.A.-T)
- Kinesiology (A.A.-T)
- Mathematics (A.S.-T)
- Music (A.A.-T)
- Political Science (A.A.-T)
- Psychology (A.A.-T)
- Sociology (A.A.-T)
- Studio Arts (A.A.-T)
- Theatre (A.A.-T)



Pre-Assessment: C-ID Questions

- ▶ C-ID is a common numbering system among what institutions of higher education?
- ▶ What is one valuable reason for having a course approved for C-ID?
- ▶ Where can a person find a college's approved C-ID courses?



C-ID

- ▶ C-ID is a supranumbering system developed to ease transfer and articulation in California's higher education institutions.
- ▶ C-ID has 368 approved descriptors and 33 draft descriptors from over 81 different disciplines.
- ▶ Impact to articulation and students:
 - ▶ Reduces need to submit articulation requests for course to course and major articulation
 - ▶ Allows counselors/students to find courses with same C-ID numbers at other colleges and know that they will satisfy the same major requirement (CSU GE-B and IGETC are campus specific)
- ▶ <https://c-id.net/>



Yuba College's C-ID Courses:

- ▶ 149 courses approved for C-ID (Mendocino has 219 approved; Shasta has 206 approved; Butte has 195 approved)
- ▶ Example C-ID GEOL 120
 - = YC PHYSC 10A Earth Science
 - = Sierra College's ESCI 10 Earth Science
 - = Cosumnes River College's GEOL 305 Earth Science

(This course is on the TMC for Elementary Teacher Education.)

Timelines for articulation

June/July/August 2020:

- ▶ Send curriculum updates to CSU and UC
- ▶ Submit courses for UC TCA for 2020-2021 academic year
- ▶ Submit courses for articulation with CSU and UC for 20-21 (all year, but early is best as articulation is for the academic year)

October 2020:

- ▶ Resubmit any courses denied UC TCA if appropriate (if approved, retro to Fall 2020)

December 2020:

- ▶ Submit courses for CSU GE-B and IGETC 2021-2022 (must be CSU Bacc and UC TCA approved)

April 2021:

- ▶ Approval/denial for CSU GE-B and IGETC arrive

All academic year 2020-2021:

- ▶ Submit course to course and major articulation requests
- ▶ Submit pre-articulation requests for 2021-2022 year especially if significant like changing from a 3 term sequence to a 2 term
- ▶ Submit courses for C-ID



Questions and Answers

